

Supplementary Figure S5

CT26 (*KRAS* G12C) clone E3

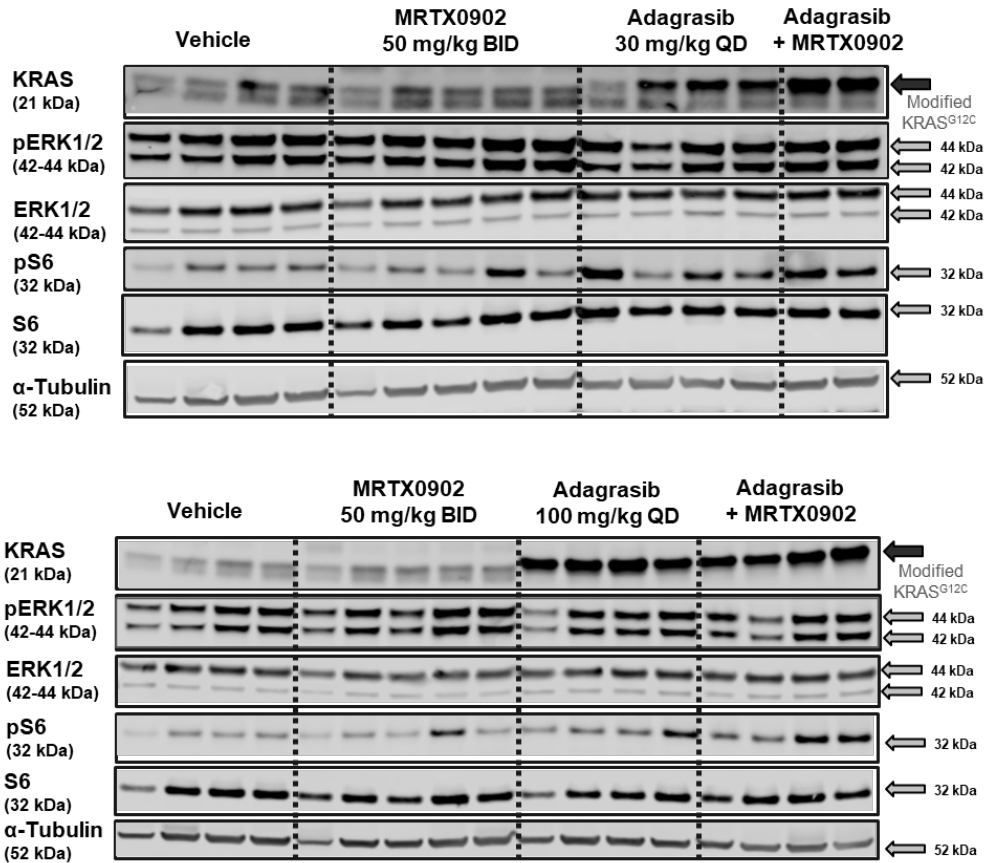


Figure S5. Coadministration of MRTX0902 with adagrasib leads to robust *KRAS*-MAPK pathway modulation in the murine CT26 (*KRAS* G12C-mutant) model. MRTX0902 and adagrasib were administered via oral gavage as described in Figure 5A. Tumors were collected 4 hours post last dose, and pERK and pS6 levels were analyzed by immunoblot and quantified by densitometric analysis. Immunoblot image is a composite of multiple independent blots probed for in the indicated proteins as detailed in the Supplementary Data section.