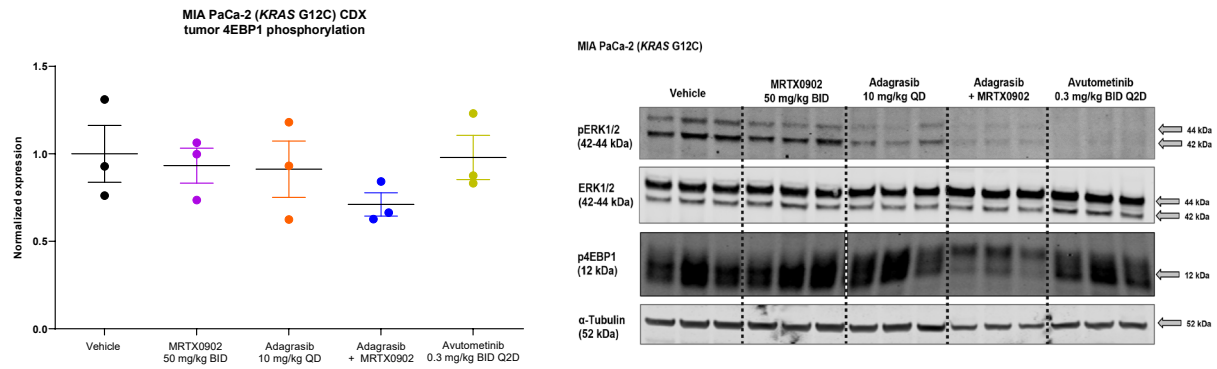


## Supplementary Figure S4



**Figure S4.** Coadministration of MRTX0902 with adagrasib leads to robust *KRAS*-MAPK pathway modulation in the MIA PaCa-2 (*KRAS* G12C-mutant) model. MIA PaCa-2 tumor-bearing animals were treated with vehicle or drug as described in Figure 4A. Tumors were collected 4 hours post last dose, and p4EBP1 levels were analyzed by immunoblot and quantified by densitometric analysis. Immunoblot image is a composite of multiple independent blots probed for in the indicated proteins as detailed in the Supplementary Data section.