

Supplementary Figure S2

Figure S2A

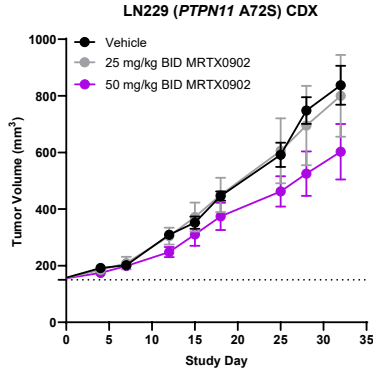


Figure S2B

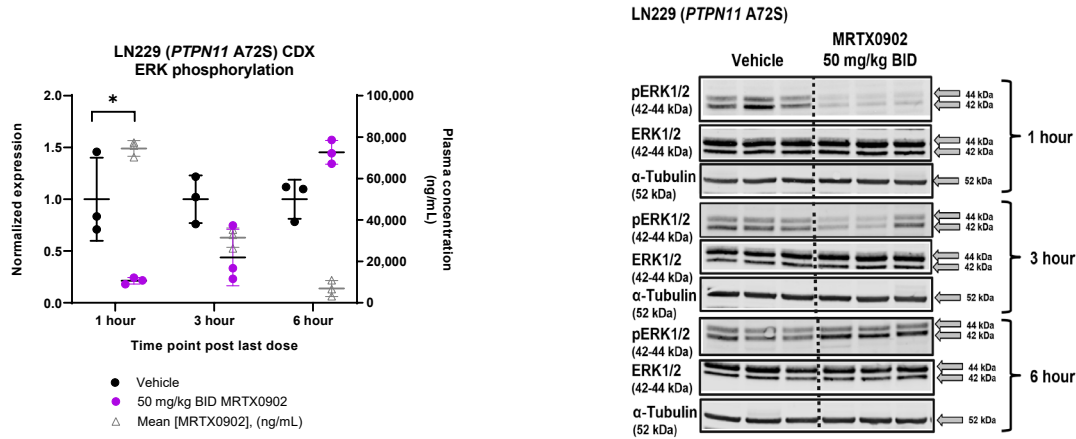


Figure S2. MRTX0902 inhibits KRAS-MAPK pathway signaling and tumor growth *in vivo*. **A**, MRTX0902 was administered orally to mice bearing established LN229 tumor xenografts. Data for $n = 5$ animals/group are shown as mean tumor volume \pm SEM. **B**, MRTX0902 was administered to LN229 tumor-bearing animals for 6 days and pERK levels in tumor lysates were analyzed by immunoblot and quantified by densitometric analysis. Blood (plasma) was collected for MRTX0902 pharmacokinetic analysis. Data shown represent the individual data for 3 tumors per treatment group \pm SD. Reduction of pERK relative fluorescence intensity was determined to be statistically significant using the two-tailed Student's t test. Brackets (*) indicate $p < 0.05$ compared with vehicle-treated samples. Immunoblot image is a composite of multiple independent blots ran as detailed in the Supplementary Data section.