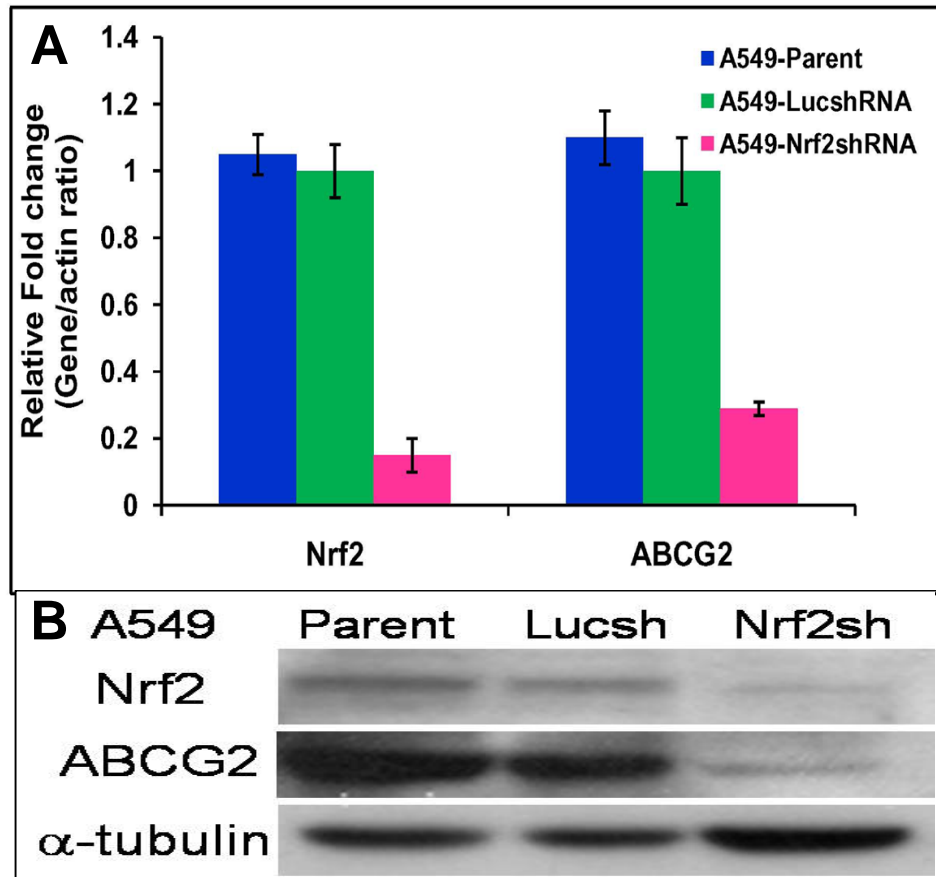
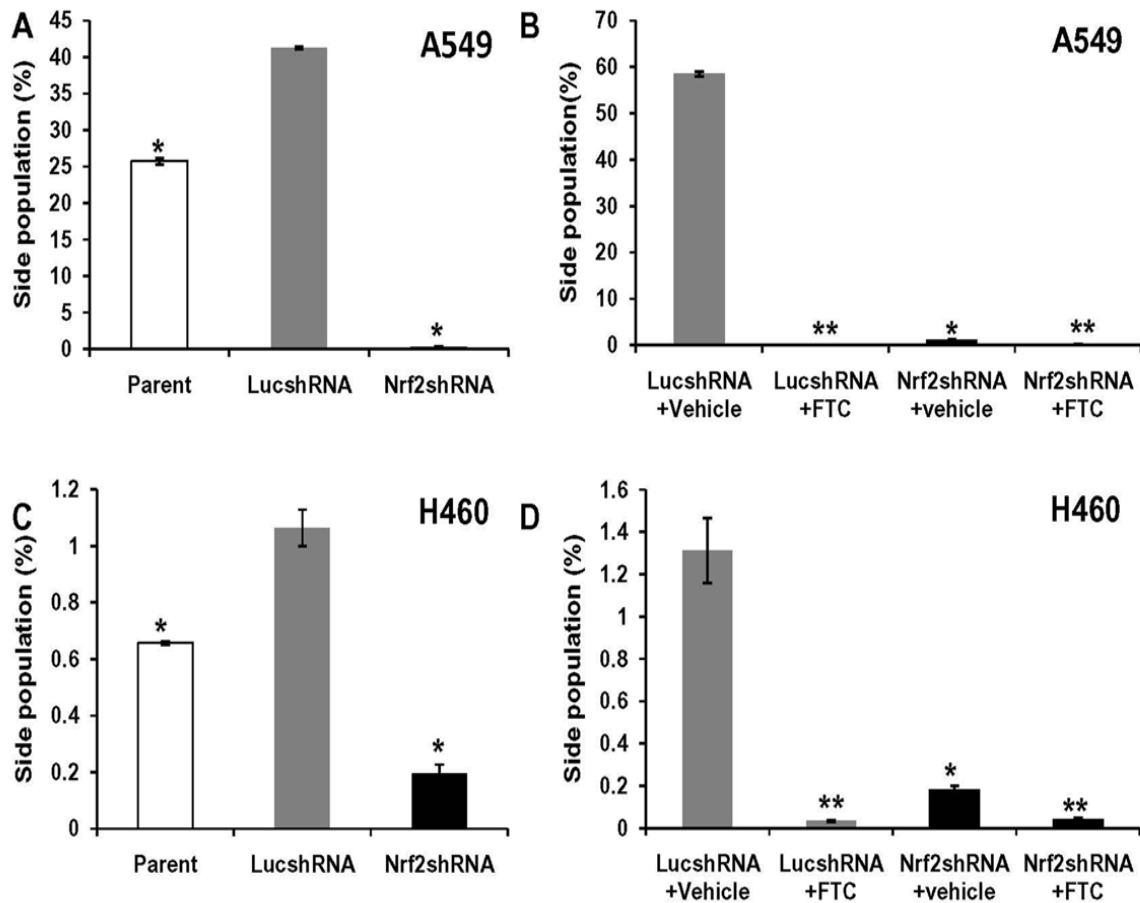


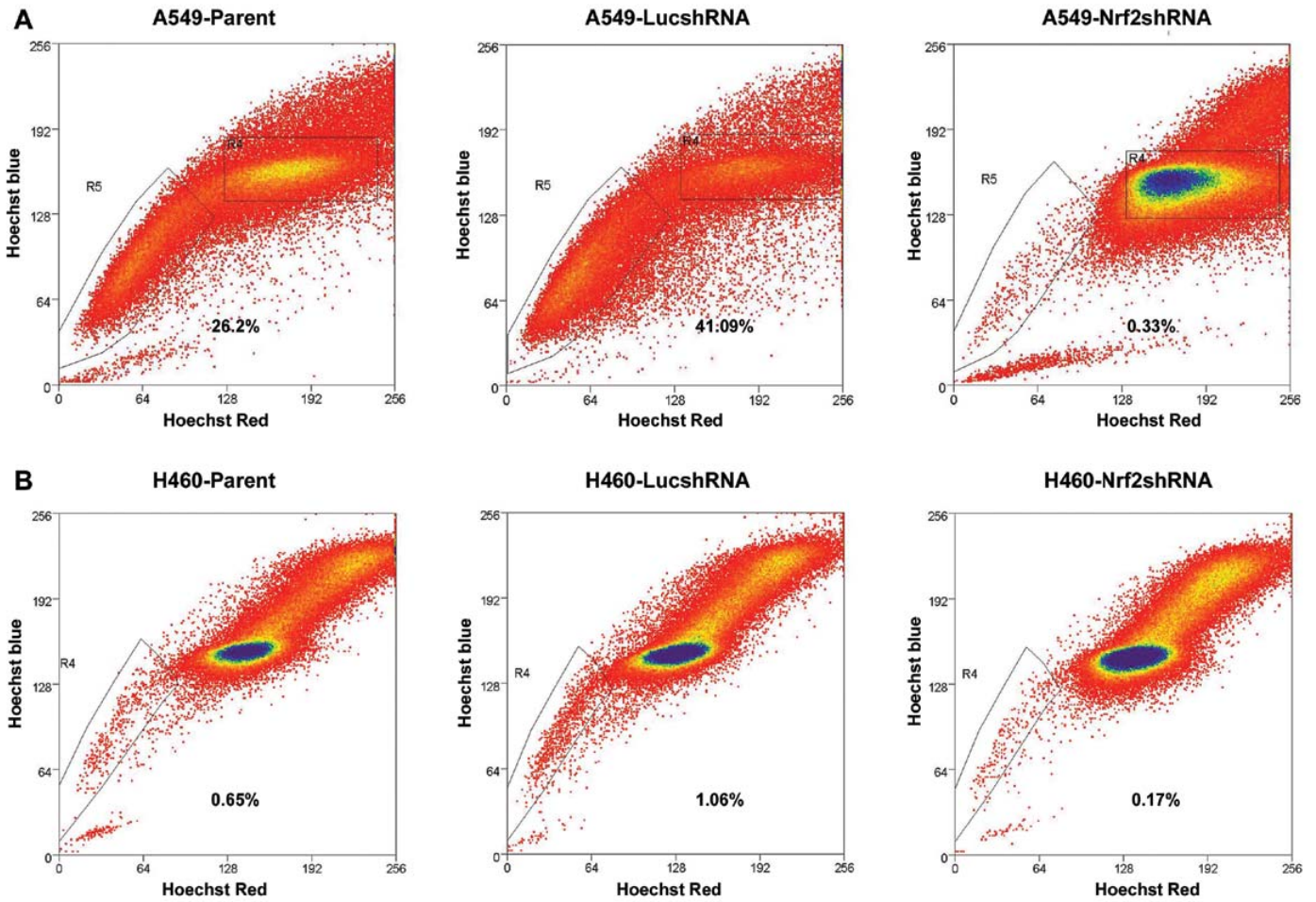
Supplementary Figure S1. Expression analyses of *Nrf2*, and ABCG2 in DA549 parent cells, A549-LucshRNA cells and A549-Nrf2shRNA cells. (A) Real-time expression analyses of *Nrf2*, and ABCG2 in A549 parent cells, A549-LucshRNA cells and A549-Nrf2shRNA cells. (B) Immunoblot showing reduced expression of Nrf2 and ABCG2 in A549-Nrf2shRNA cells. The relative levels of Nrf2 and ABCG2 protein did change between parent A549 cells and A549-LucshRNA cells.



Supplementary Figure S2. Graphical representation of side population (%) in lung cancer cells. (A) SP analysis in A549 parent, A549-LucshRNA and A549-Nrf2shRNA cells stained with Hoechst dye and PI. (B) SP analysis in A549-LucshRNA and A549 Nrf2shRNA cells stained with Hoechst dye and PI. To demonstrate the specificity of staining, a fraction of cells were incubated with Hoechst dye in the presence of Fumitremorgin C (FTC) followed by PI staining. (C) SP analysis in H460 parent, H460-LucshRNA and H460-Nrf2shRNA cells stained with Hoechst dye and PI. (D) SP analysis in A549-LucshRNA and A549 Nrf2shRNA cells stained with Hoechst dye in the presence of FTC followed by PI staining and flow cytometry. The numbers represent the mean % derived from three independent immunostaining and/or flow cytometry analyses. ‘*’, p-value<0.05, significant when compared with lucshRNA group.



Supplementary Figure S3. Side population analysis in lung cancer cells. A549 and H460 parent cells, lung cells expressing luciferase shRNA (A549-LucshRNA, H460-LucshRNA) and Nrf2shRNA expressing cells (A549-Nrf2shRNA and H460-Nrf2shRNA)



Supplementary Figure S4. Hoechst dye based side population analysis in Du145-parent cells, Du145-LucshRNA and Du145-NrfshRNA cells.

