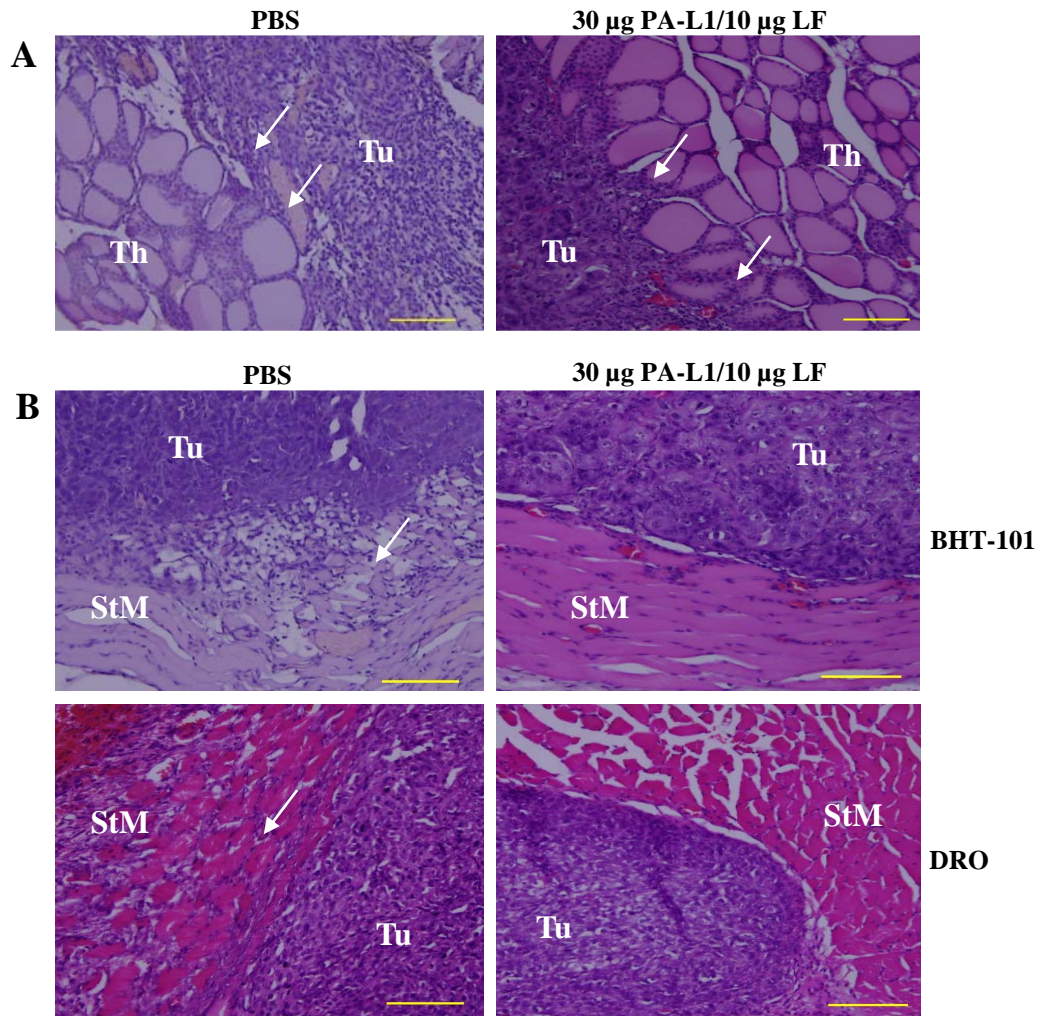


Alfano et al., Supplementary Figure 1



Supplementary Figure 1: PA-L1/LF inhibits BHT-101 and DRO orthotopic tumor progression. (A) Representative PBS and PA-L1/LF-treated BHT-101 orthotopic xenografts shows widespread interdigitation of tumor cells (white arrows) from the main tumor mass (Tu) in between the thyroid follicles (Th). (B) The superficial margins of PBS-treated BHT-101 and DRO tumors (Tu) show extensive tumor cell invasion (white arrows) into the strap muscles (StM) while mice treated with PA-L1/LF exhibit minimal invasion. Scale = 100 µm, total magnification 100x.