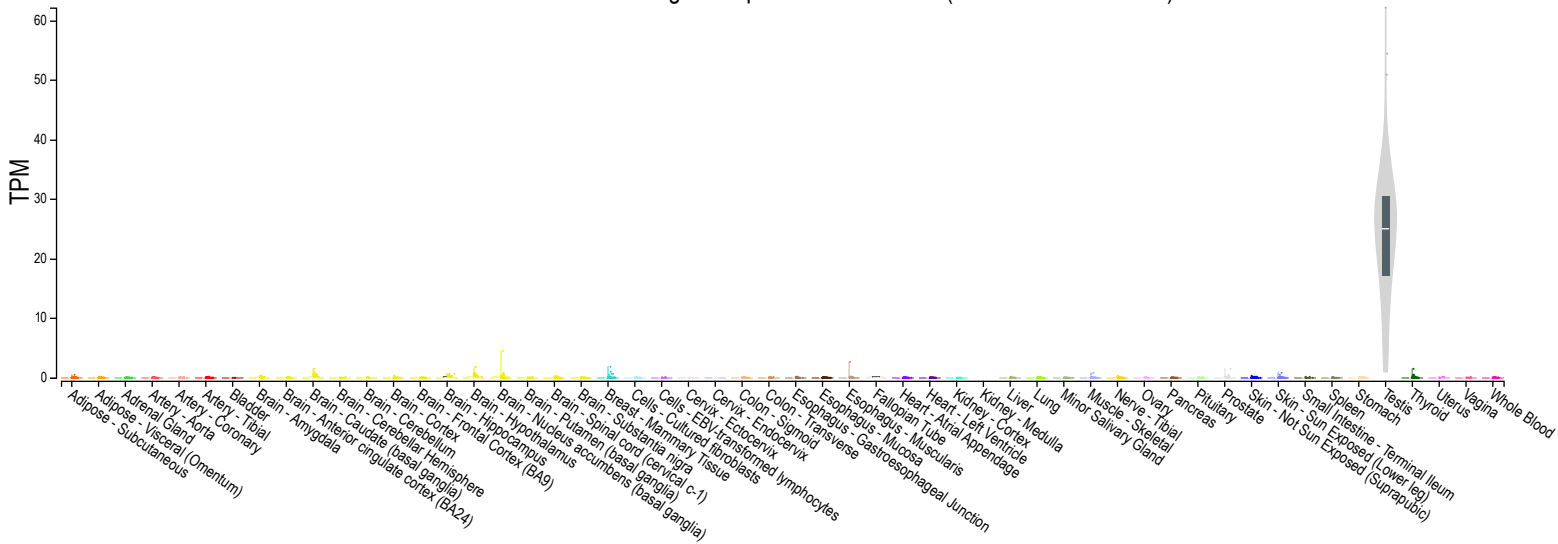
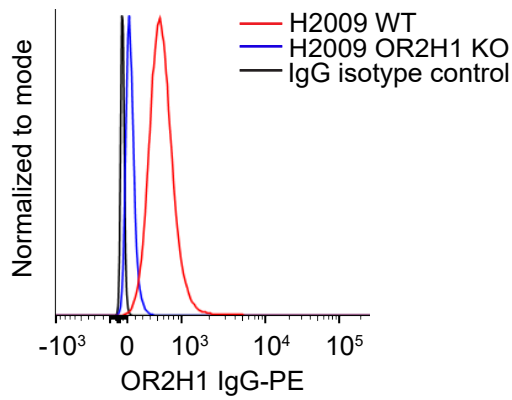


A

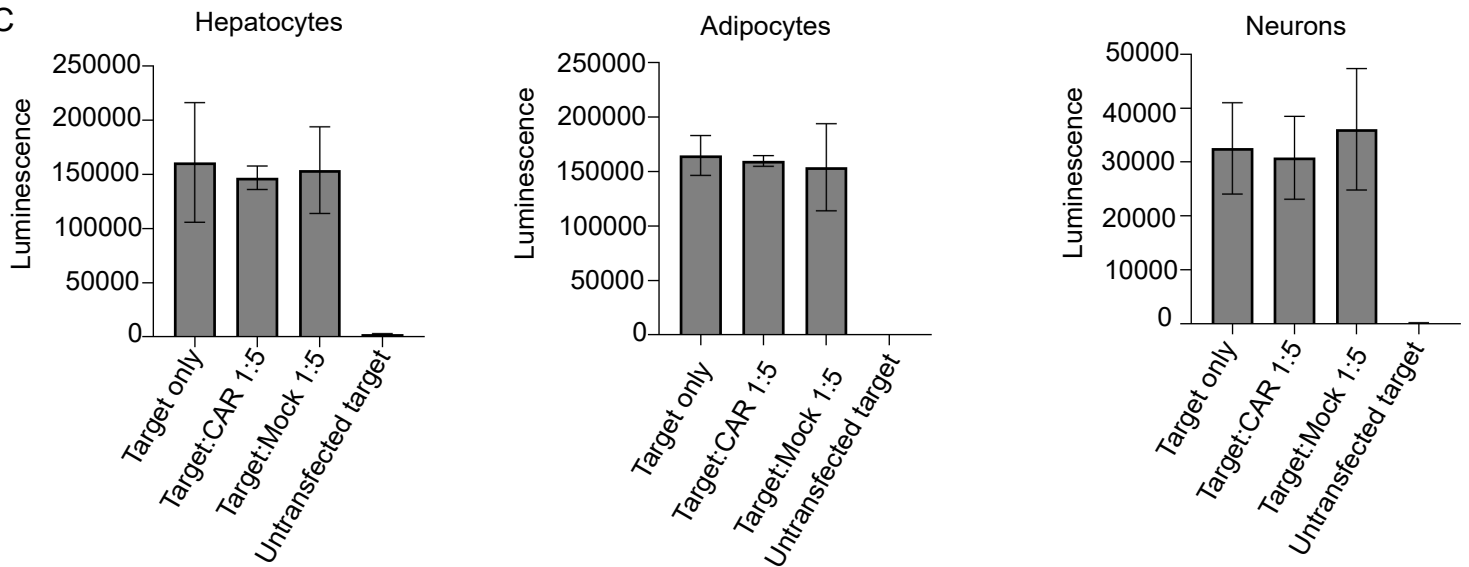
Bulk tissue gene expression for OR2H1 (ENSG00000204688.9)



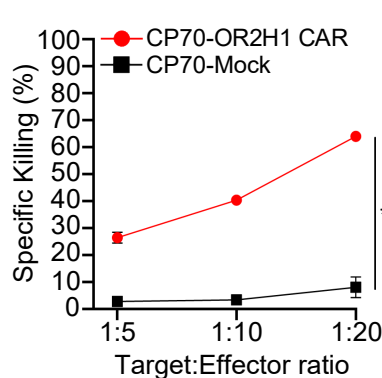
B



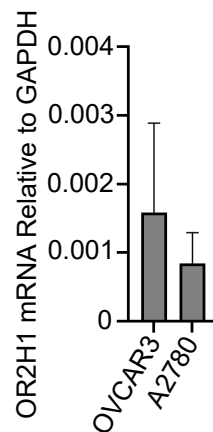
C



D



E



SUPPLEMENTAL FIGURE LEGEND

Supplementary Figure 1. (A) Expression of OR2H1 in GTEX. (B) Histograms illustrating FACS analysis of OR2H1 expression on H2009-*wildtype* and H2009-OR2H1 ablated cells used to calculate the number of OR2H1-IgG antibodies bound per cell. (C) Mean absolute values for luminescence for primary hepatocytes, adipocytes, and neurons transfected with luciferase and co-cultured with either OR2H1 CAR or mock transduced T cells at a ratio of 1:5 demonstrating similar transfection efficiencies across wells with significantly increased bioluminescence (>90%) compared to untransfected cells. Each condition was performed and quantified in triplicate. (D) Cytotoxicity of OR2H1 CAR or mock transduced T cells of A2780 cisplatin-resistant (CP70)-luciferase tumors measured by luciferase detection after co-culture of 8 hours. (E) RT-QPCR comparing expression of OR2H1 in OVCAR3 and A2780 cell lines.