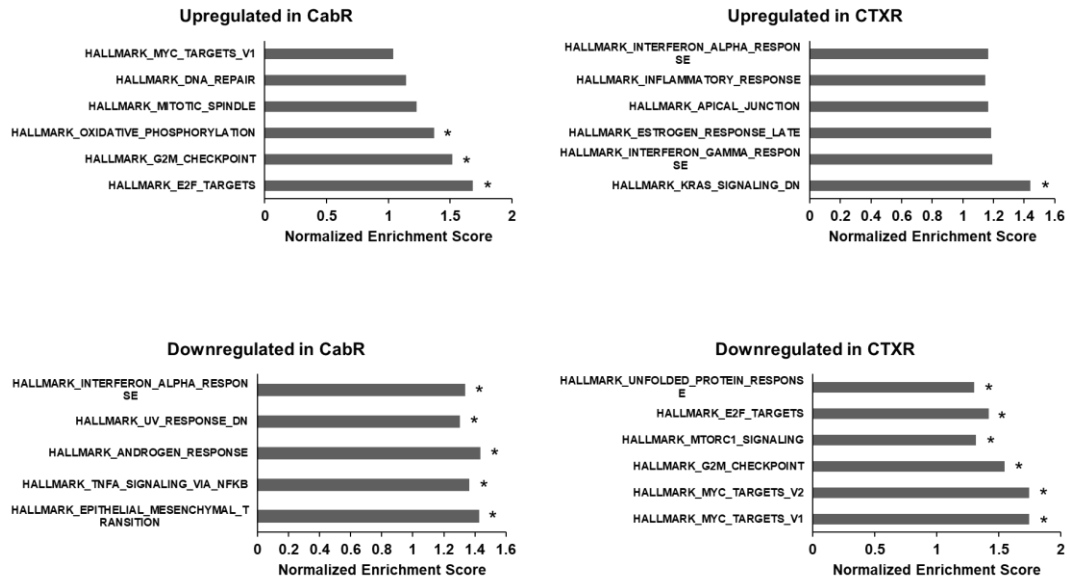
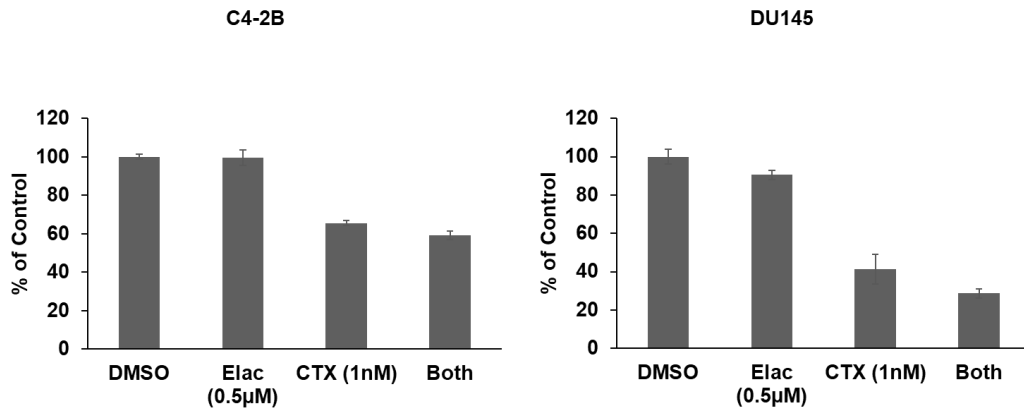


Figure S1



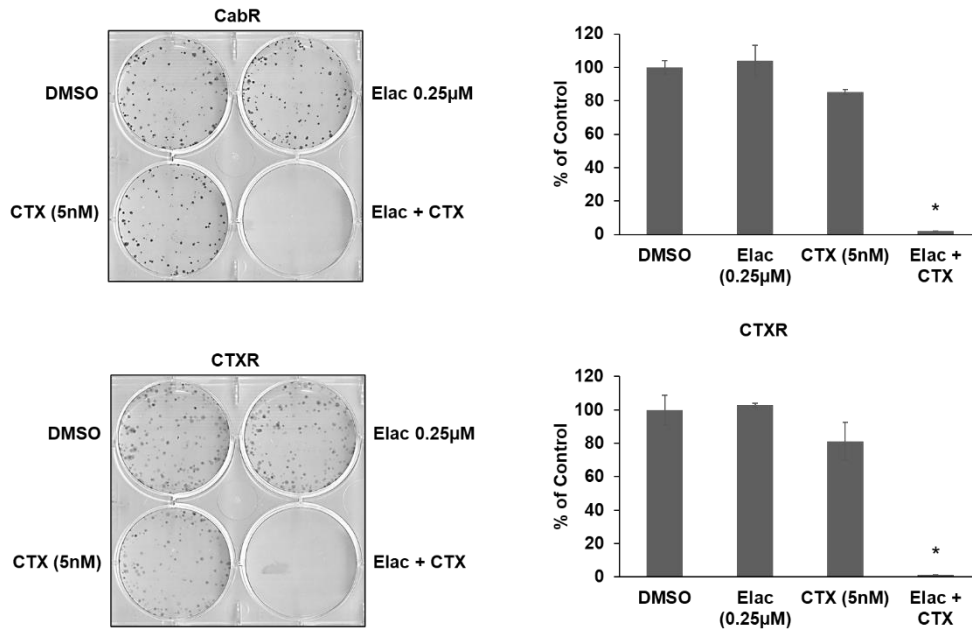
Supplementary Figure 1: GSEA shows pathway differences between cabazitaxel and docetaxel resistant cell lines. * = p-value ≤ 0.05 .

Figure S2



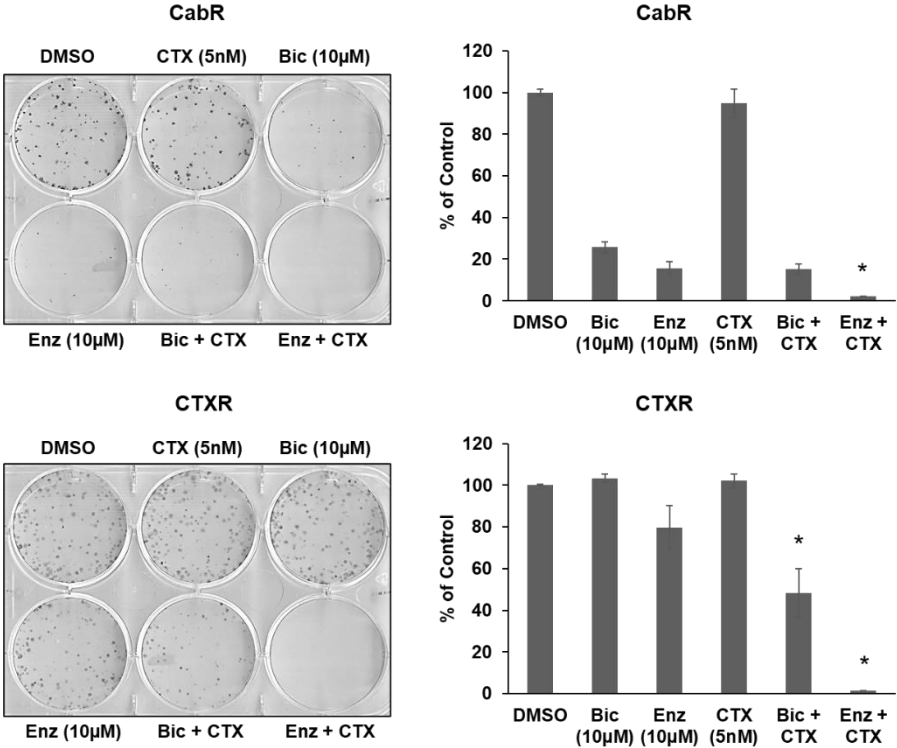
Supplementary Figure 2: Cell growth assays were used to test the combination of elacridar with cabazitaxel in C4-2B and DU145 cells. Elac = elacridar, CTX = cabazitaxel.

Figure S3



Supplementary Figure 3: Colony formation assays tested the combination of elacridar with cabazitaxel in CabR and CTXR cells. Elac = elacridar, CTX = cabazitaxel. * = p-value ≤ 0.05 .

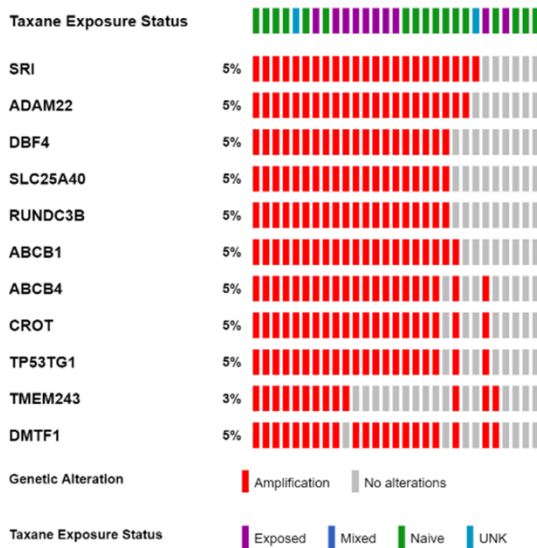
Figure S4



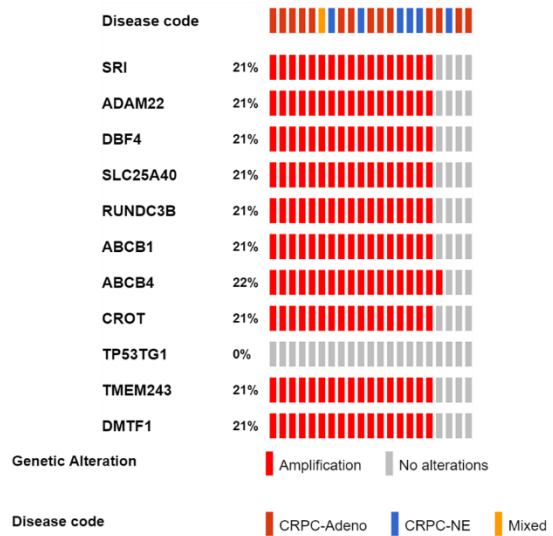
Supplementary Figure 4: Colony formation assays tested the combination of either bicalutamide or enzalutamide with cabazitaxel in CabR and CTXR cells. Bic = bicalutamide, Enz = enzalutamide, CTX = cabazitaxel. * = p-value ≤ 0.05 .

Figure S5

Metastatic Prostate Adenocarcinoma
(SU2C/PCF Dream Team, PNAS 2019)
Tumor Samples with CNA data (429 patients
/ 444 samples)



Neuroendocrine Prostate Cancer (Multi-
Institute, Nat Med 2016)
- Samples with CNA, 81 patients/114 samples



Supplementary Figure 5: Interrogation of two additional cBioPortal datasets for the presence of amplification of ABCB1-amplicon genes.