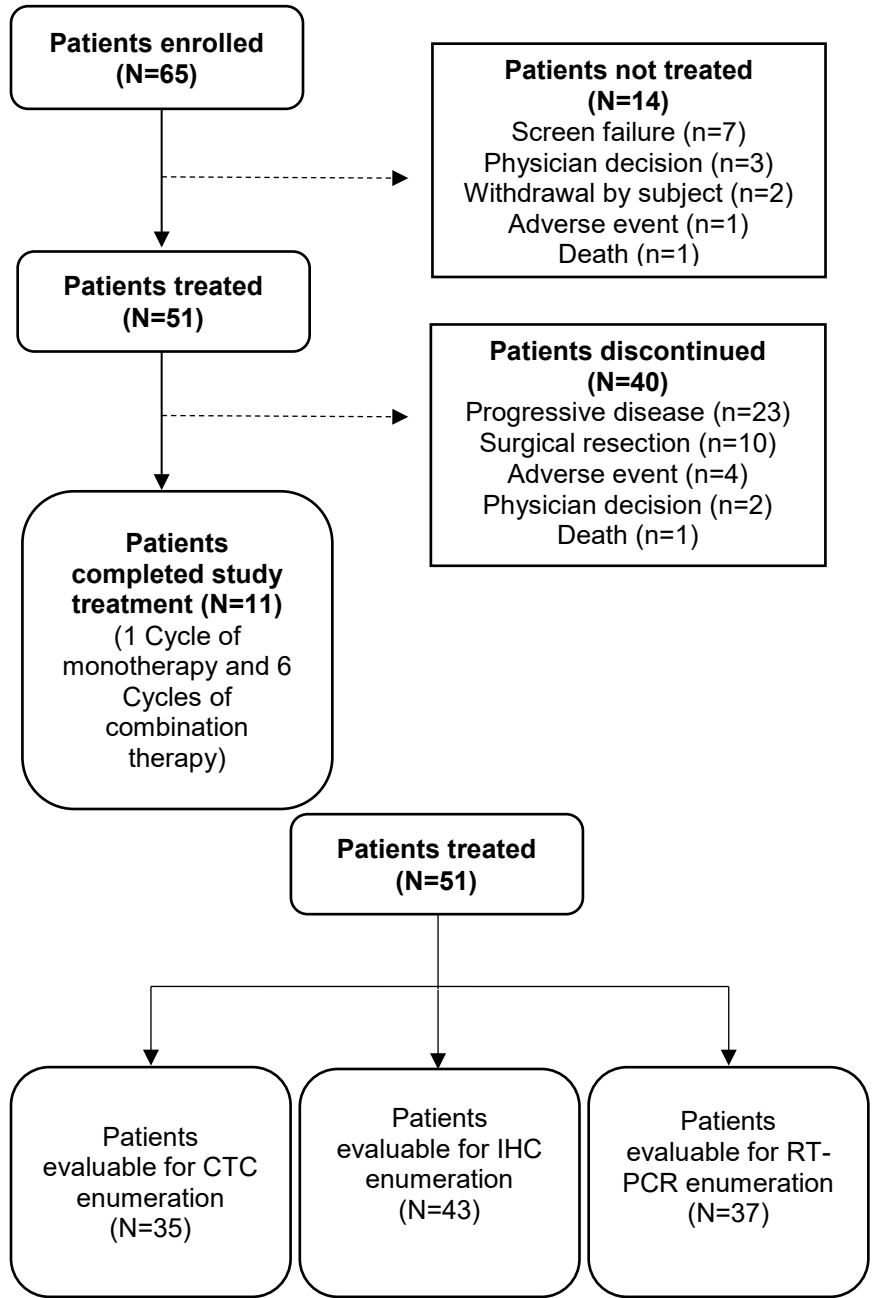


Supplementary Fig. S2 CONSORT diagram for patient disposition and availability of biomarker for analyses.



Evaluable patients were those with adequate biomarker samples who had baseline (pre-monotherapy) and at least 1 post-baseline measurement. If a patient was noncompliant during olaratumab monotherapy (Cycle 1) and did not undergo the post-olaratumab monotherapy biopsy or the Cycle 1, Day 1 pre-dose and Cycle 2, Day 1 pre-dose whole blood sample collection due to reasons other than drug-related toxicity, he or she was considered non-evaluative. These patients were replaced to ensure that 35 patients completed the pre-treatment tissue biopsy, the Cycle 1, Day 1 pre-dose whole blood sample collection, 1 cycle of olaratumab monotherapy, and the post-olaratumab monotherapy biopsy, and the associated Cycle 2, Day 1 pre-dose whole blood sample collection.

Abbreviations: CTC, circulating tumor cells; IHC, immunohistochemistry; RT-PCR, reverse transcription polymerase chain reaction; N, total number of patients in the group; n, number of patients in the subgroup.