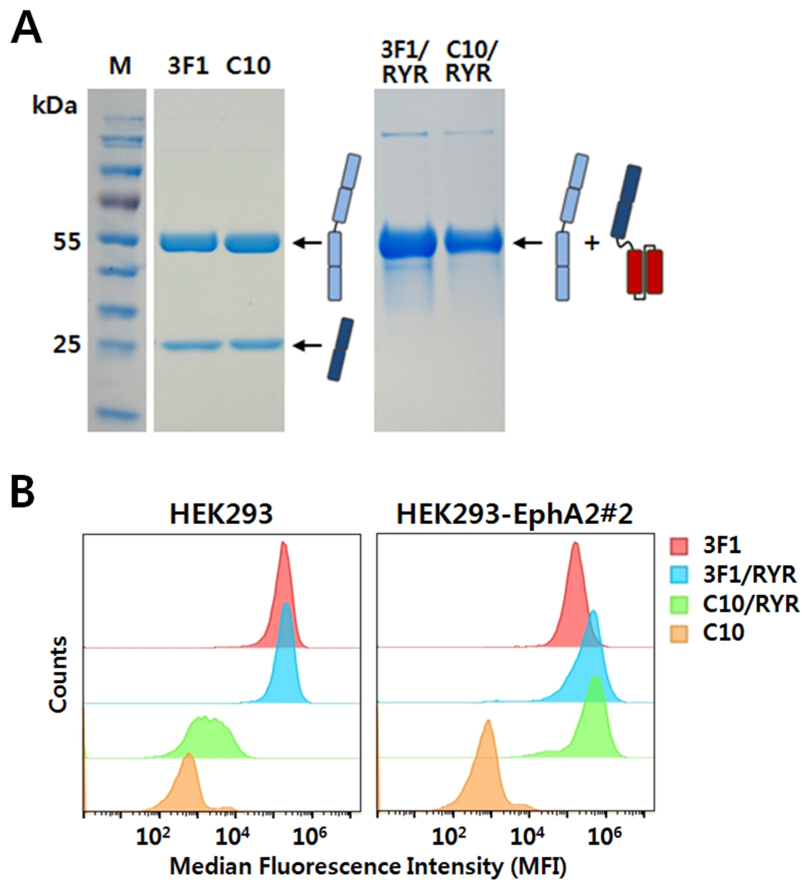


## Supplementary Figure S2



**Supplementary Fig. S2.** Characterization of the anti-ALCAMxEphA2 bispecific.

A) Reducing SDS-PAGE analysis of monoclonal (3F1 and C10) and bispecific (3F1/RYR and C10/RYR) antibodies. 3F1 or C10 IgG is composed of heavy (~50 kDa) and light (~25 kDa) chains. 3F1/RYR or C10/RYR bsIgG is composed of two similar-sized bands (~50 kDa), a heavy chain and a light chain fused with a scFv. B) FACS analysis of binding specificity. Bispecific and monoclonal antibodies were incubated with the HEK293-EphA2#2 cell line that stably expresses EphA2 and the parental HEK293 (as a specificity control), and analyzed by FACS.