

Supplementary Figure 1

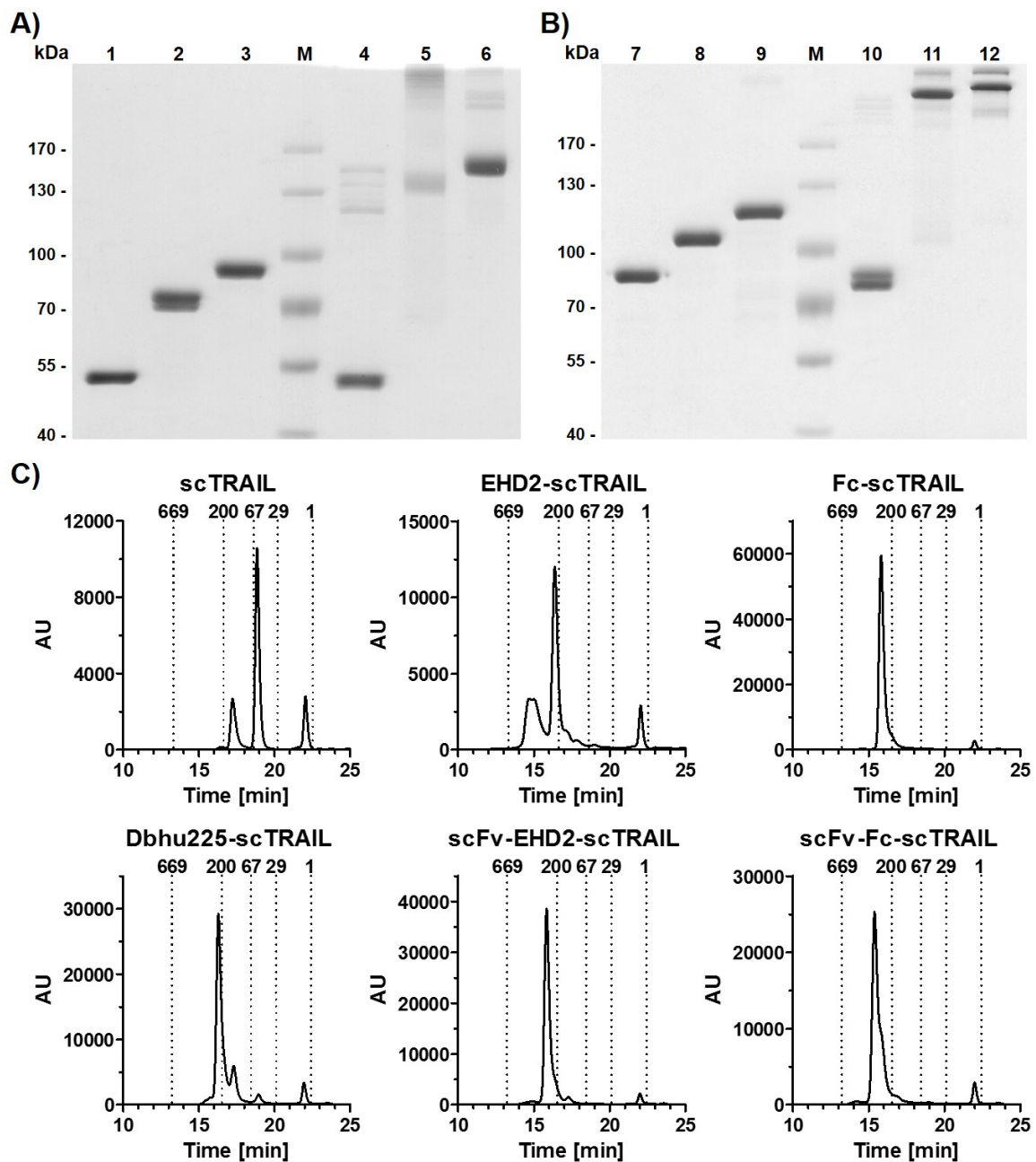


Figure S1: Biochemical characterization of scTRAIL fusion proteins. A) SDS-PAGE (8% PAA) analysis of purified scTRAIL, EHD2-scTRAIL, and Fc-scTRAIL under reducing (lanes 1, 2, 3) and non-reducing conditions (lanes 4, 5, 6). B) SDS-PAGE analysis of purified Db-scTRAIL, scFv-EHD2-scTRAIL, and scFv-Fc-scTRAIL under reducing (lanes 7, 8, 9) and non-reducing conditions (lanes 10, 11, 12). 2 μ g protein were analyzed per lane (lane M, molecular mass standard). C) Size exclusion HPLC of non-targeted and EGFR-targeting scTRAIL molecules. Elution points of standard proteins and their respective molecular masses [kDa] are indicated.