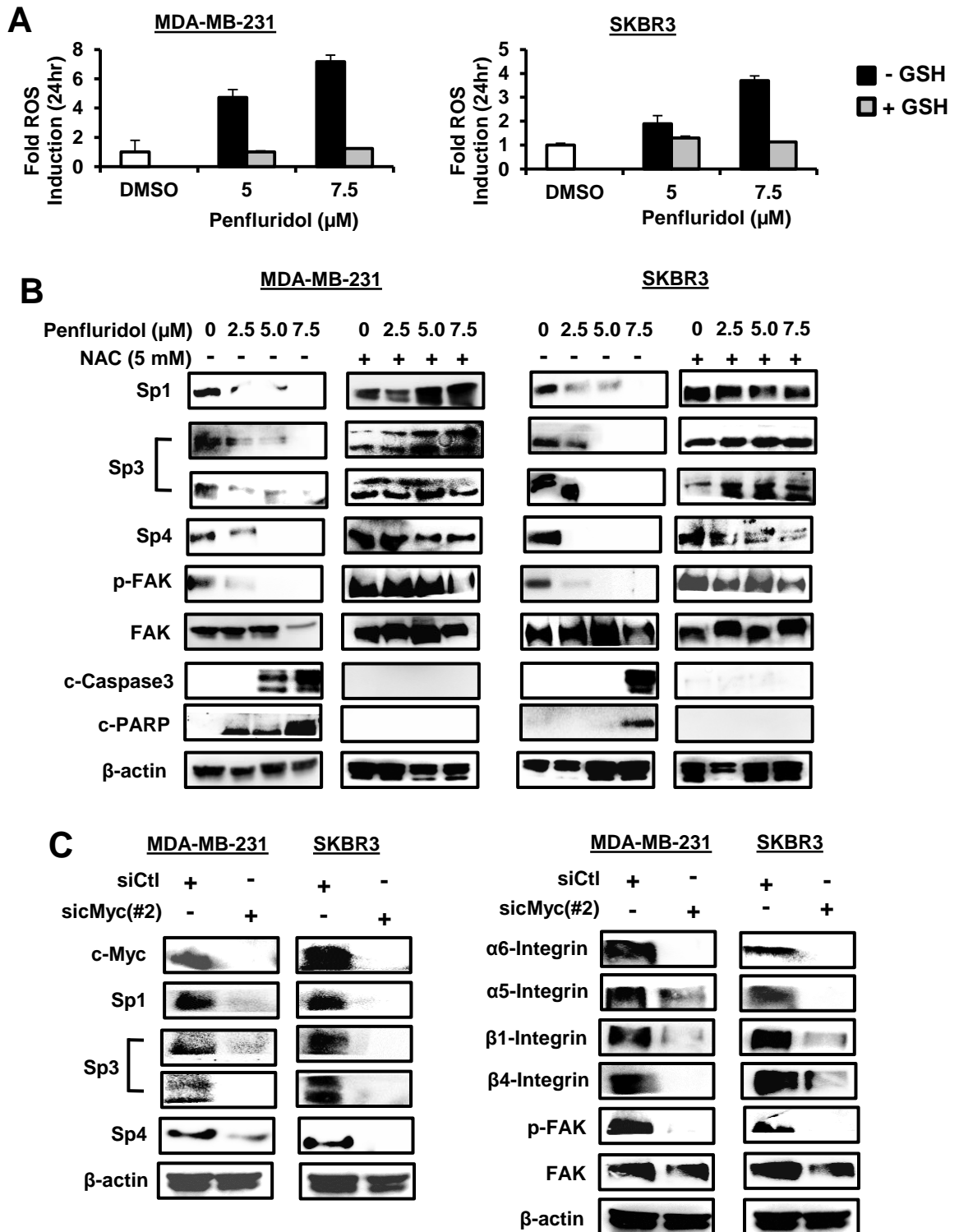


Supplemental Figure S1



Supplemental Figure S1. Role of ROS and cMyc in penfluridol-induced responses. (A) Induction of ROS. Cells were treated with penfluridol alone or in combination with GSH, and ROS was determined after 24 hr. (B) Role of ROS in penfluridol-induced responses. Cells were treated with penfluridol alone or in combination with NAC for 24 hr, and whole cell lysates were analyzed by western blots. (C) cMyc knockdown. Cells were transfected with siCtl (control) or siMyc(#2), and whole cell lysates were analyzed by western blots.