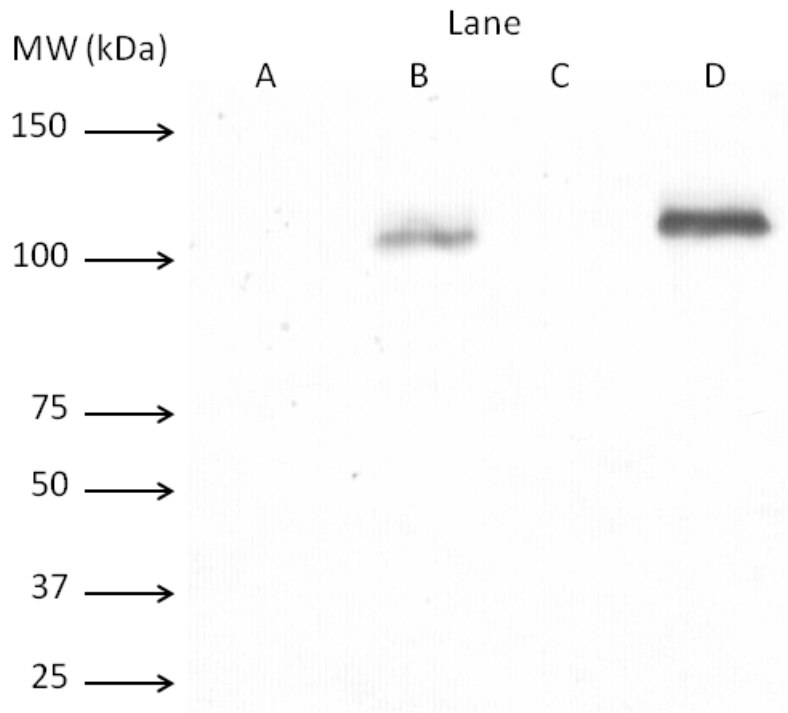


**Figure S3A**

Flow cytometry demonstrating the enhanced expression of PSMA by HUVEC exposed to cell cultured media (CCM) as described in methods (A). Comparison to stably PSMA expressing LNCaP (B) and to PSMA negative HUVEC incubated in standard conditions (C). (D) Table listing the shift values. Cells were stained with a primary human anti-PSMA mouse monoclonal antibody followed by a FITC-labeled anti-mouse -Fc secondary antibody.



<u>Lane</u>	<u>Contents</u>
A	HUVEC
B	PSMA+ HUVEC
C	Empty well
D	LNCaP

**Figure S3B**

Western blot demonstrates PSMA expression by HUVEC incubated with cancer-cell treated media contrary to 'regularly' grown HUVEC. LnCap stably express PSMA.