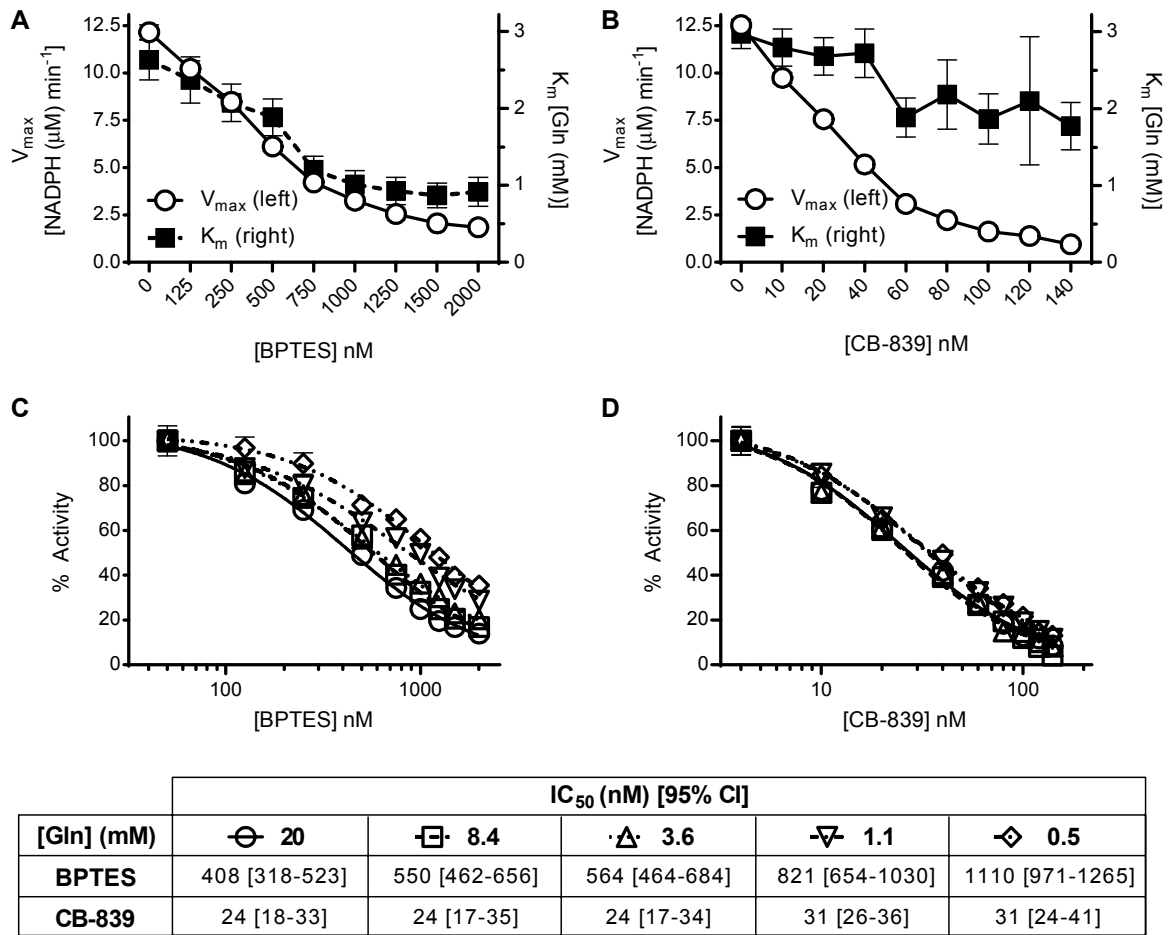


Gross et al., "Antitumor Activity of the Glutaminase Inhibitor CB-839 in TNBC"
Supplementary Figure S1



Supplementary Figure S1. CB-839 is a non-competitive inhibitor of rHu-GAC. A, glutaminase activity following a 1 hour incubation of BPTES with rHu-GAC measured at different glutamine concentrations. Lineweaver-Burke plots were generated by plotting the reciprocal of the initial velocity versus the reciprocal of the glutamine concentration at several compound concentrations (not shown). V_{max} and K_m values are plotted for different concentrations of BPTES. B, glutaminase activity following a 1 hour incubation of CB-839 with rHu-GAC measured at different glutamine concentrations as described in (A). C, dose response curves for BPTES following a 1 hour incubation with rHu-GAC at different glutamine concentrations. D, dose response curves for CB-839 following a 1 hour incubation with rHu-GAC at different glutamine concentrations. Each data point represents the mean and SEM from duplicate measurements. Results are representative of three independent experiments. The IC₅₀ values and 95% CI for (C) and (D) are listed.