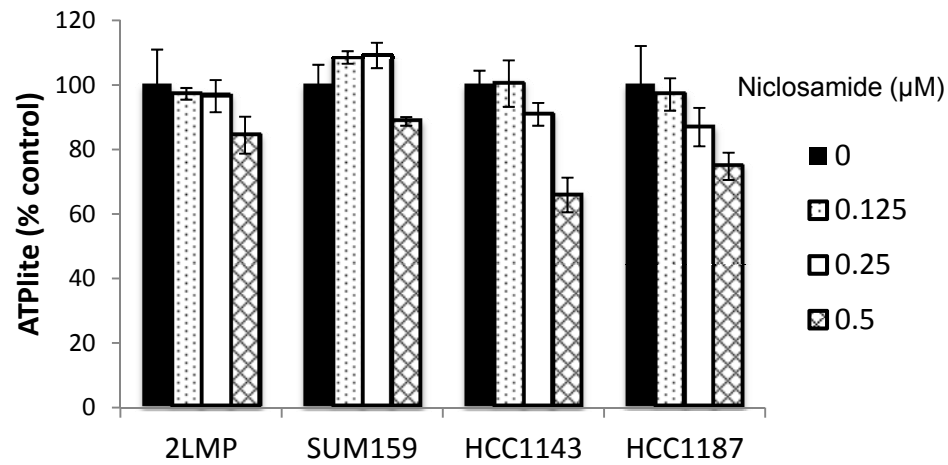


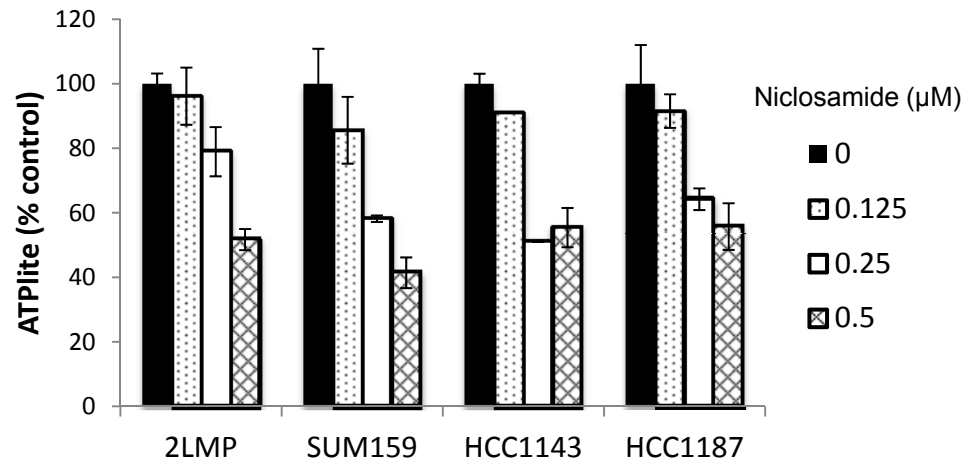
A.

Adherent



B.

NAAE



Supplementary Figure S3. ATPlite viability of cells treated with niclosamide. 2LMP, SUM159, HCC1143 and HCC1187 adherent (A) or NAAE (B) cells were treated with niclosamide for 24 hours and analyzed for viability using ATPlite assay. Individual experiments were assayed in triplicate and values represent the mean \pm SE.