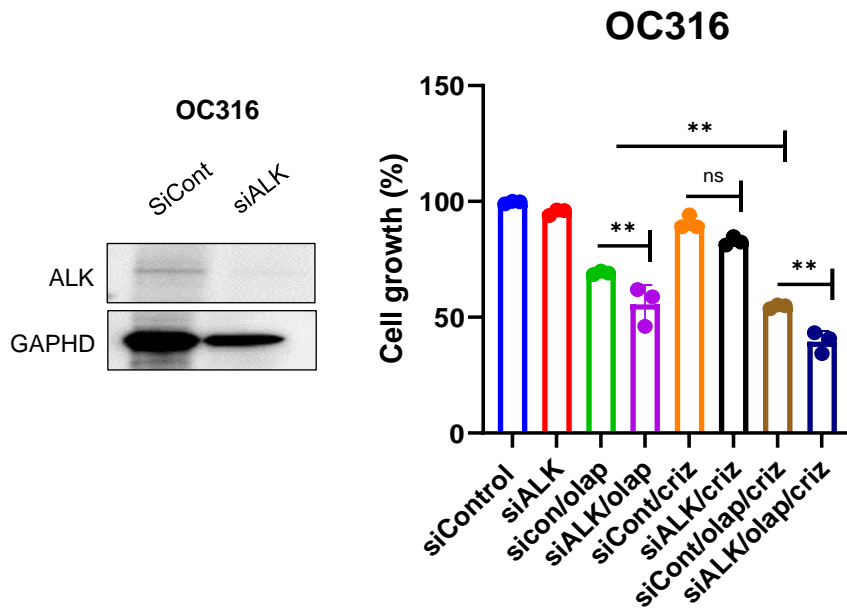
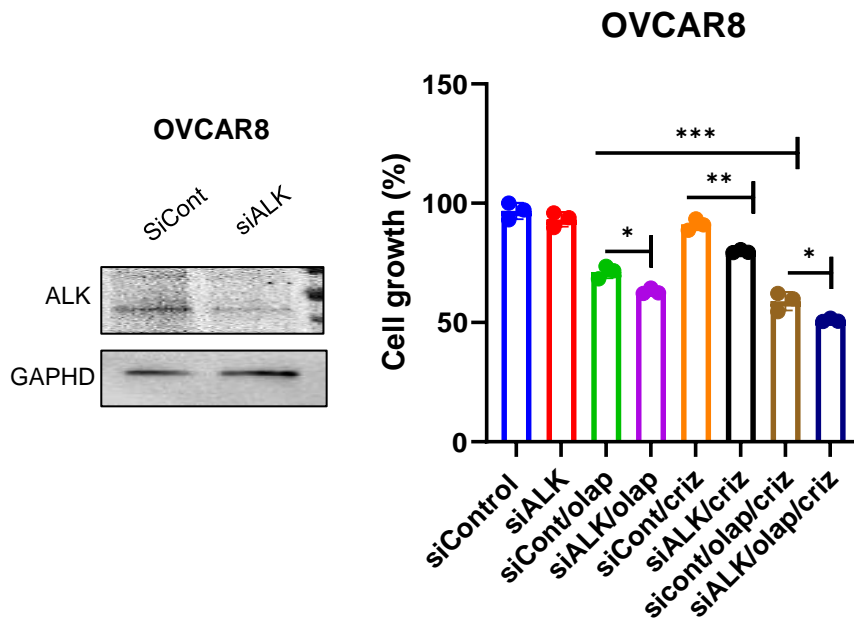


# Supplementary Figure S7.

A



B



**Supplementary Figure S7. Knocking down of ALK enhance ovarian cancer cell sensitivity to Olaparib/crizotinib combination.** OC316 and OVCAR8 cells were transfected with small interfering (si) ALK (20nM) or small interfering (si) control and treated with olap, criz or olap/criz. **(A-B)** Three thousand cells per well were plated onto 96-well plates and were then sequentially transfected with small interfering (si)ALK or and small interfering (si) control. After 24 hours, cells were treated with olap, criz or olap/criz for 5 days. Cells were fixed and stained by sulforhodamine B. \* $p < 0.05$ , \*\* $p < 0.01$ , \*\*\* $p < 0.001$ , \*\*\*\* $P < 0.0001$ . Results were obtained using one-way ANOVA. Knockdown efficacy was observed by Western blot analysis.