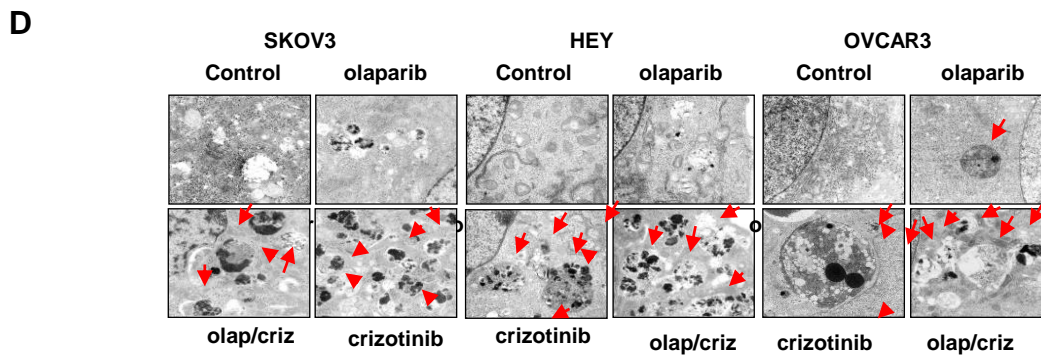
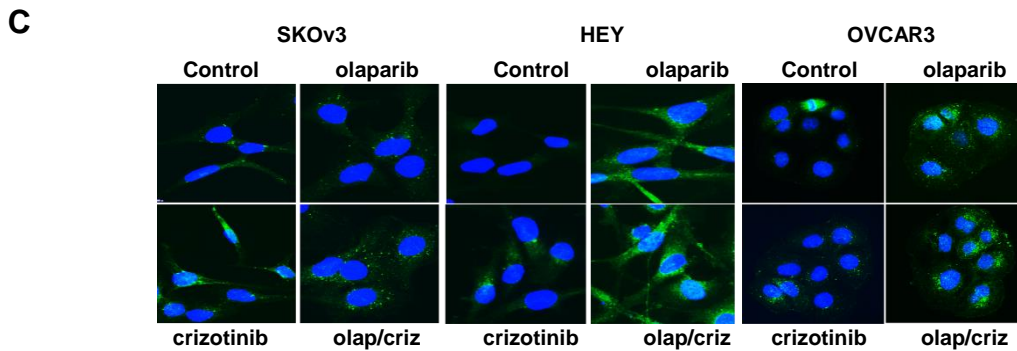
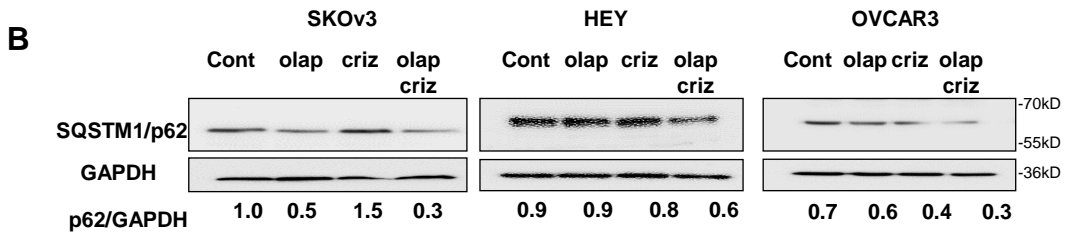
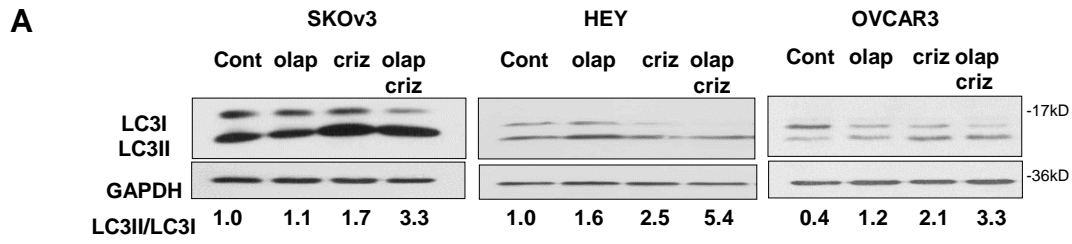


# Supplementary Figure S4.



**Supplementary Figure S4. Combination of olaparib and crizotinib induces autophagy in ovarian cancer cells. (A-B)** Analysis of LC3 and p62 protein level. Cells were treated with olaparib (olap, 5  $\mu$ M) and/or crizotinib (criz, 1  $\mu$ M). Cell lysates were collected, and western blots were performed to examine the conversion of LC3-I to LC3-II and p62 expression. Numbers below the gel lanes represent the relative protein level, determined from the band intensity, calculated with ImageJ. **(C)** Analysis of autophagy by Immunofluorescence staining of punctate LC3. Cells were plated in chamber slides and treated with olaparib (5  $\mu$ M) and crizotinib (1  $\mu$ M) for 48hrs. Representative images are presented here. Scale bar: 20 $\mu$ m. Green dots indicates LC3 and blue (DAPI) indicates nuclear stain. **(D)** Measurement of olaparib/crizotinib-induced autophagy with transmission electron microscopy (TEM) in SKOV3, HEY and OVCAR3 cells. Red arrows indicate typical membrane autophagosomes.