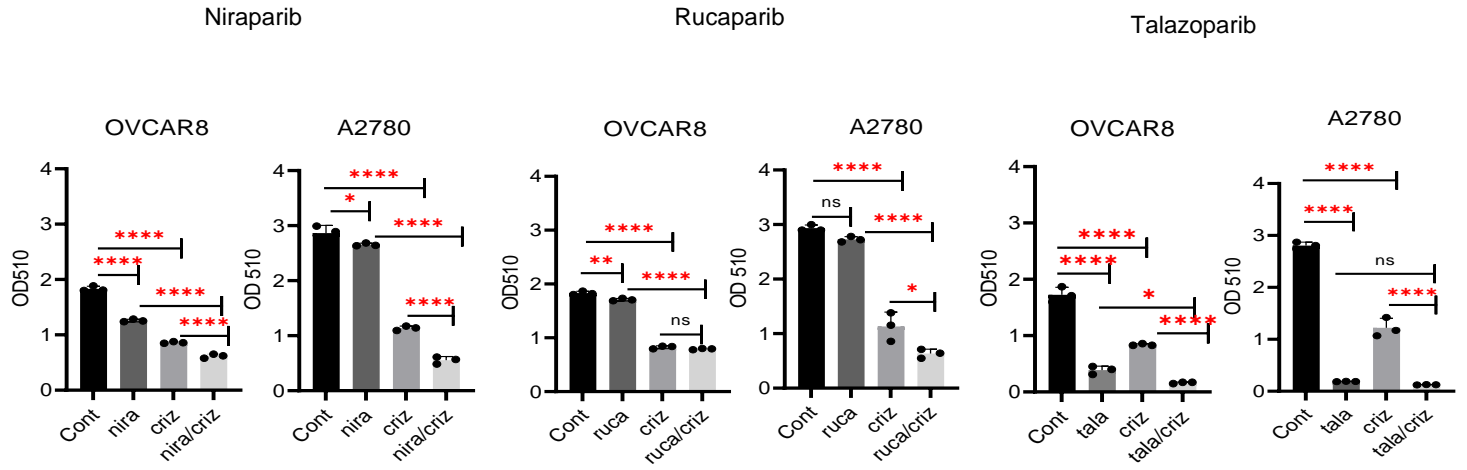


Supplementary Figure S3.



Supplementary Figure S3. Assessment of the effect of PARPi and crizotinib on ovarian cancer cell growth. 2,500-3000 OVCAR8 and A2780 cells were plate into 96-wells plate and treated with niraparib (nir), rucaparib (ruc) or talazoparib (tal) in combination with crizotinib for 5 days before fixation and staining by sulforhodamine B (SRB). Data represent results from one experiment with three replicates * $p < 0.05$, ** $p < 0.01$, *** $p < 0.001$, **** $P < 0.0001$. Results were obtained using one-way ANOVA. Error bars represent means \pm SD.