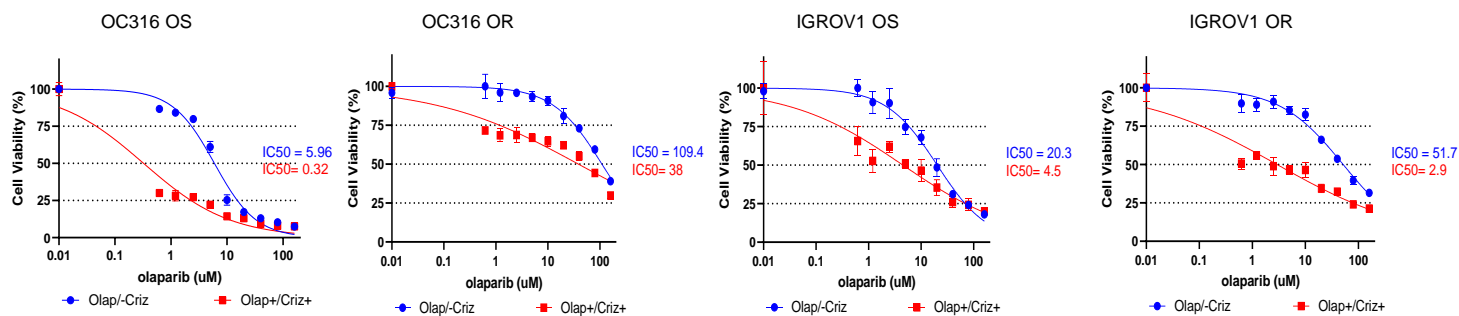
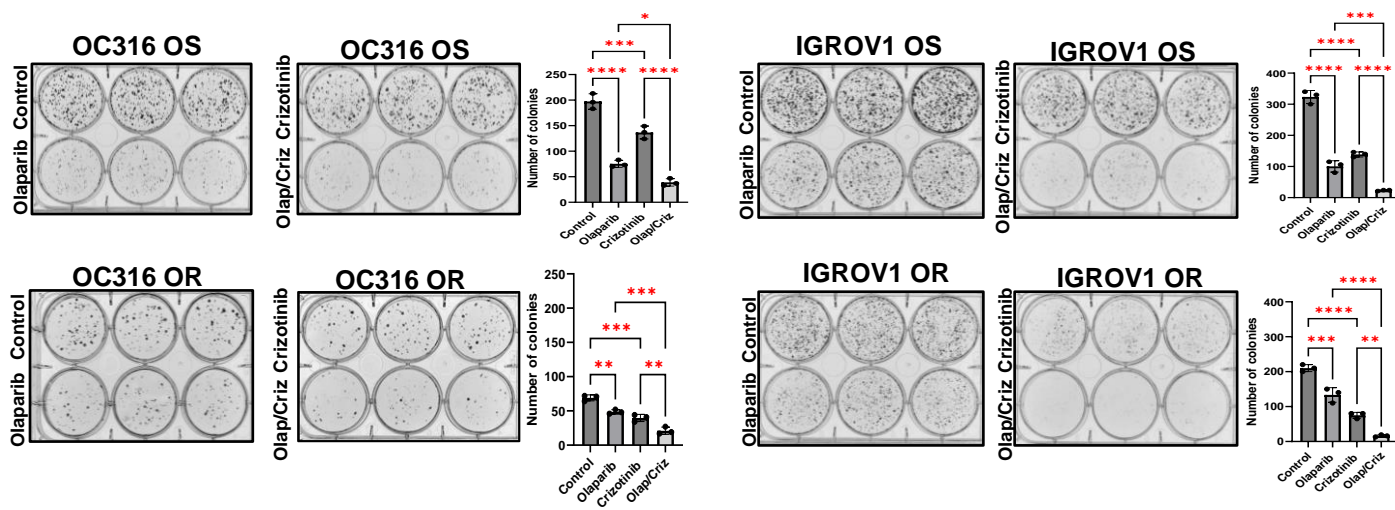


Supplementary Figure S2.

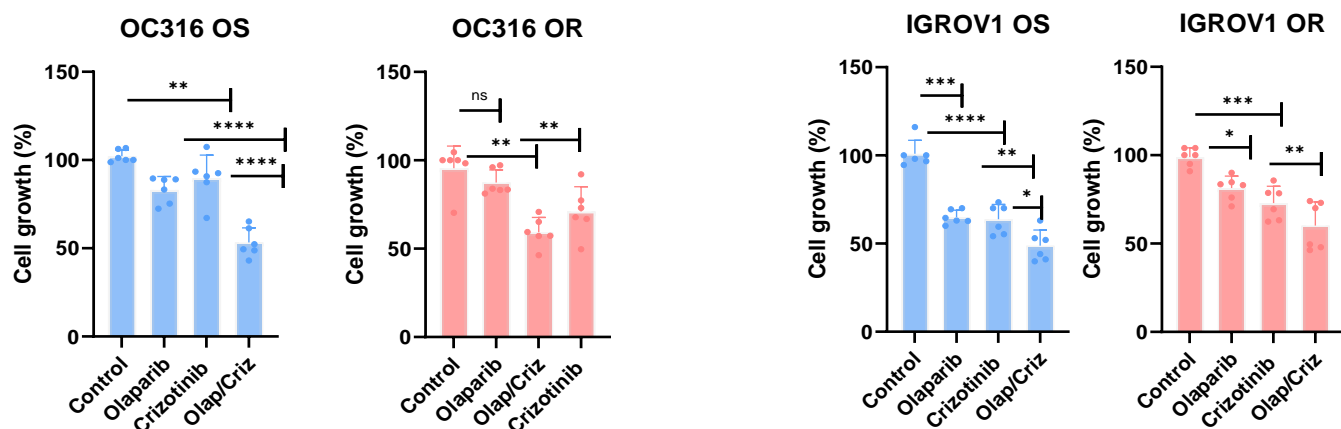
A



B



C



Supplementary Figure S2. (A) Dose-response curves for olap (blue) or olap/criz (red) for 96 hrs in sensitive OC316 OS and sensitive IGROV1 OS and resistant OC316 OR and IGROV1OR cell lines. **(B)** Evaluation of growth inhibition via colony formation assay. Cells were seeded, in a 6 well plate and cultured with olaparib, crizotinib, or olaparib + crizotinib for 8-12 days and stained with Coomassie blue. Quantification of colonies (>50 cells) in 2 olaparib sensitive and 2 olaparib resistant ovarian cancer cell lines are presented. Analysis was performed by one-way ANOVA * $p < 0.05$, ** $p < 0.01$, *** $p < 0.001$, **** $P < 0.0001$. **(C)** OC316 and IGROV1 olaparib sensitive and resistant cells were treated with 5 μM of olaparib (olap), 1 μM of crizotinib (criz) or both for 5 days before fixation and staining by sulforhodamine B (SRB). Data represents results from two independent experiments with three replicates.