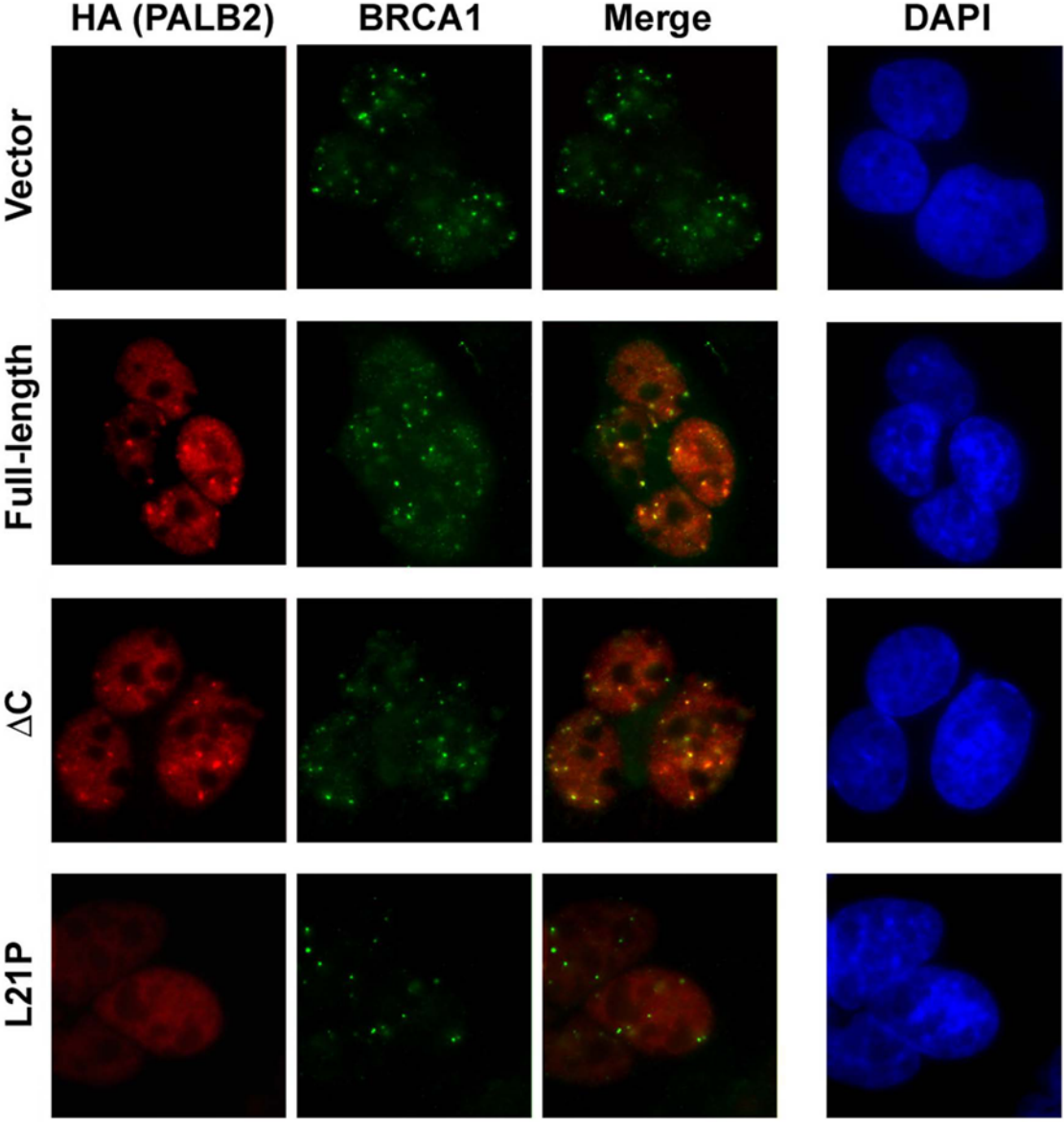
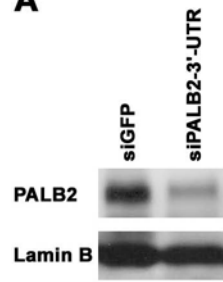


Zhang et al., Suppl. Fig. 1

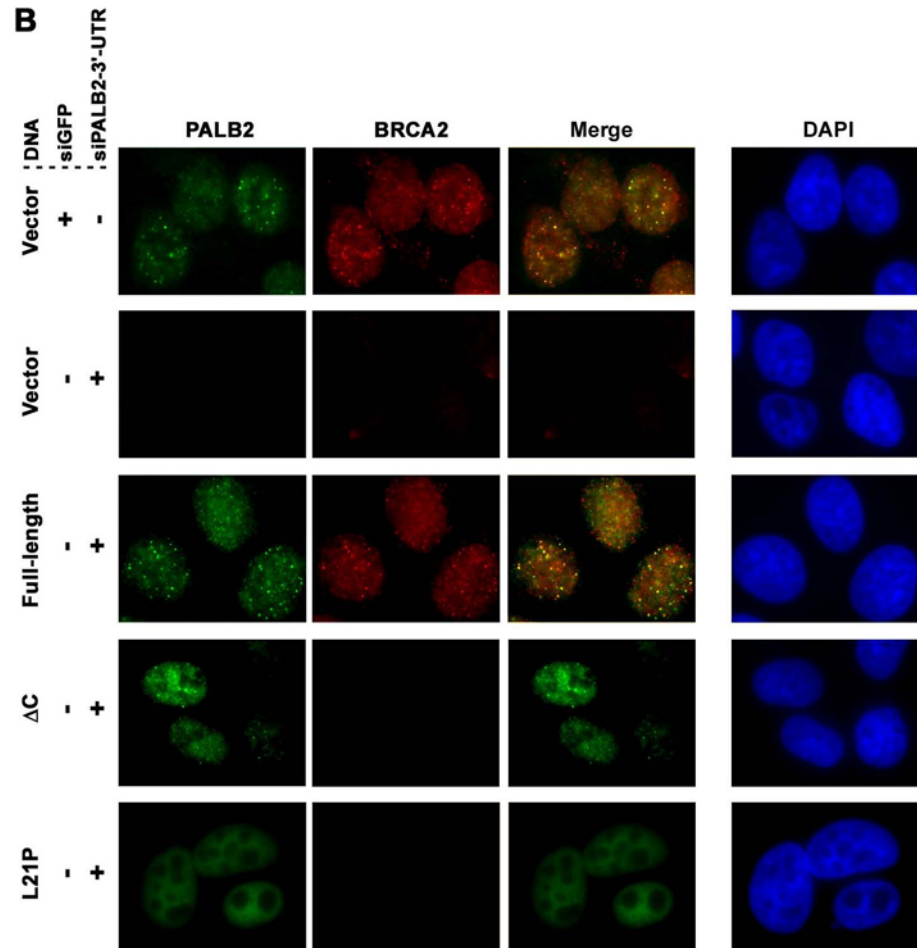


Zhang et al., Suppl. Fig. 2

A



B



LEGENDS FOR SUPPLEMENTAL FIGURES

Supplemental Figure 1. PALB2-full-length and PALB2 Δ C, but not PALB2-L21P, colocalize with BRCA1. Representative images of PALB2 foci, detected with anti-HA antibodies, in EUFA1341 fibroblasts stably expressing PALB2-full-length (wild type), PALB2 Δ C, PALB2-L21P, or empty pMMP vector alone. Each construct contained a N-terminal Flag-HA antibody. Cells were also labeled with anti-BRCA1 antibodies and were counterstained with DAPI for the identification of nuclei.

Supplemental Figure 2. U2OS cell model for the analysis of the effects of PALB2 mutants on the assembly of BRCA2 foci. **A.** Immunoblot for PALB2 in extracts from U2OS cells transfected with siRNAs against GFP (control) or the 3'-UTR of PALB2. Lamin B is shown as a loading control. **B.** Examples of PALB2 or BRCA2 foci in U2OS cells transfected with siGFP or siPALB2-3'-UTR. Cells stably expressed Flag-HA-PALB2 (full-length), Flag-HA-PALB2- Δ C, Flag-HA-PALB2-L21P, or contained empty vector alone. Cells were fixed 16 hr after exposure to 15 Gy ionizing radiation. These images demonstrate depletion of endogenous PALB2, but not exogenously expressed PALB2, using siPALB2-3'-UTR. Colocalization of PALB2 and BRCA2 is indicated by the presence of yellow foci in the merged image.