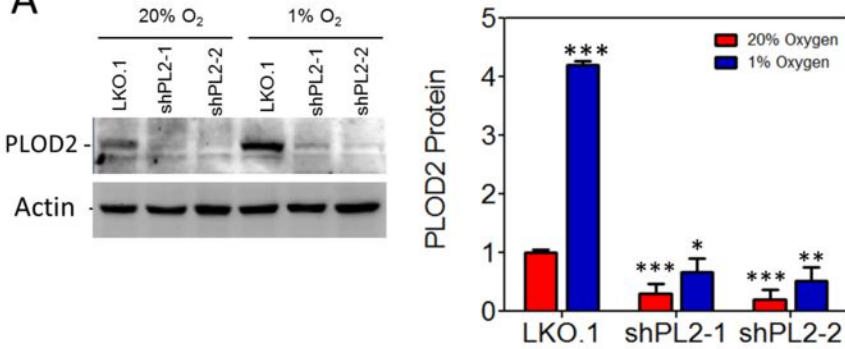
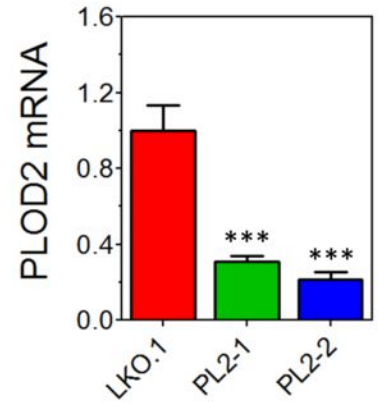


## Supplemental Figure 2

A



B



**Supplemental Figure 2.** A, immunoblot assays were performed using lysates prepared from control (shLKO.1) or PLOD2-knockdown (shPL2-1 and shPL2-2) MDA-MB-435 subclones exposed to 20% or 1% O<sub>2</sub> for 48 hours (left). The optical density from three independent experiments was used to quantify the knockdown level in the subclones (right), two-way ANOVA with Bonferroni post-test. \* $P < 0.05$ , \*\* $P < 0.01$ , \*\*\* $P < 0.001$  vs. shLKO.1 (20% O<sub>2</sub>). B, human PLOD2 mRNA levels in mouse tumors were determined by RT-qPCR (mean ± SEM,  $n = 5$ , one-way ANOVA with Bonferroni \*\*\* $P < 0.001$  vs. LKO.1).