

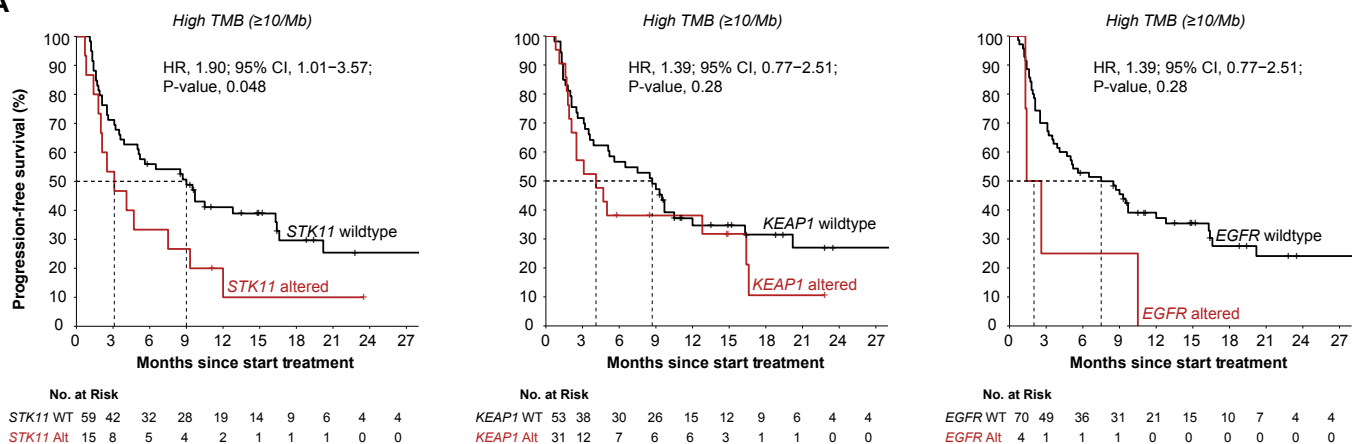
Figure S4. Alterations in STK11, KEAP1, or EGFR and survival of TMB-based subgroups in the validation cohort.

A. Kaplan-Meier curves showing the OS of patients with a low (<10 muts/Mb) TMB in the validation cohort, stratified based on the presence/absence of alterations in STK11 (left plot), KEAP1 (center plot), or EGFR (right plot). Dashed lines indicate the median survival. The numbers at risk are shown in the table below the plot. Cox regression-based univariate hazard ratios, 95% confidence intervals and two-sided Wald's test-based P-values are shown.

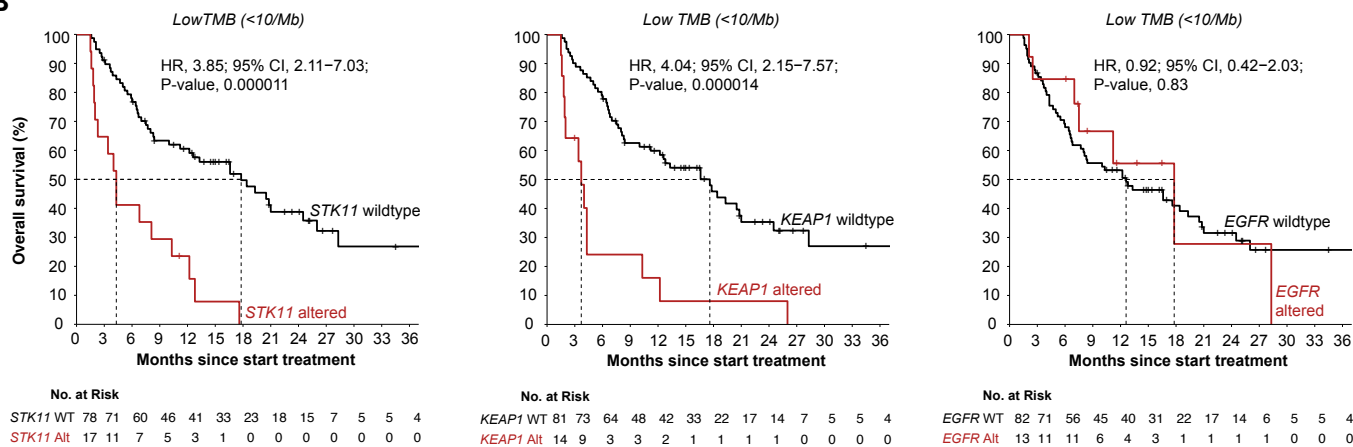
B. As A, but for PFS in patients with a high (≥ 10 muts/Mb) TMB.

C. As A, but for patients with a high (≥ 10 muts/Mb) TMB.

A



B



C

