

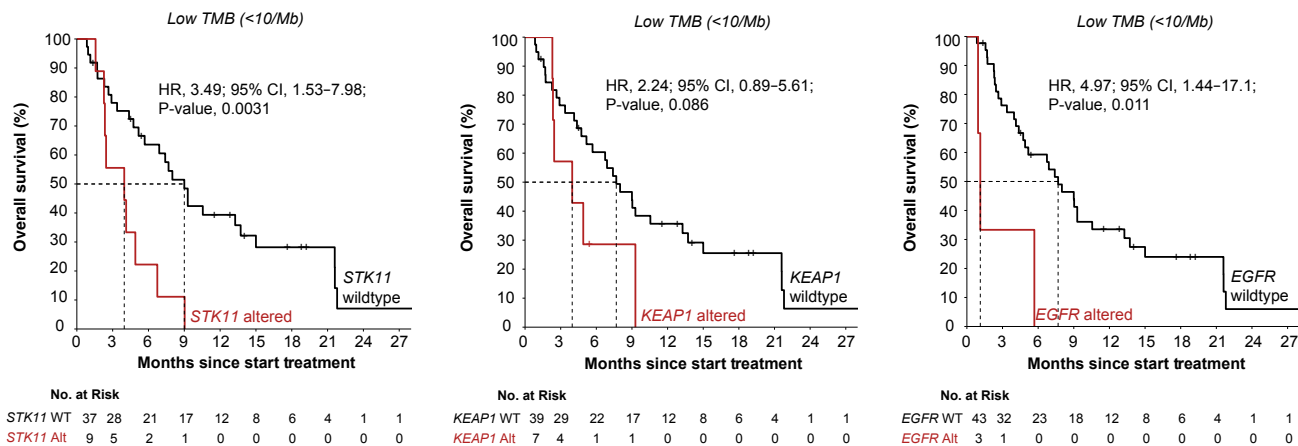
Figure S3. STK11/KEAP1/EGFR alterations and survival of TMB-based subgroups in the discovery cohort.

A. Kaplan-Meier curves showing the OS of patients with a low (<10 muts/Mb) TMB in the discovery cohort, stratified based on the presence/absence of alterations in STK11 (left plot), KEAP1 (center plot), or EGFR (right plot). Dashed lines indicate the median survival. The numbers at risk are shown in the table below the plot. Cox regression-based univariate hazard ratios, 95% confidence intervals and two-sided Wald's test-based P-values are shown.

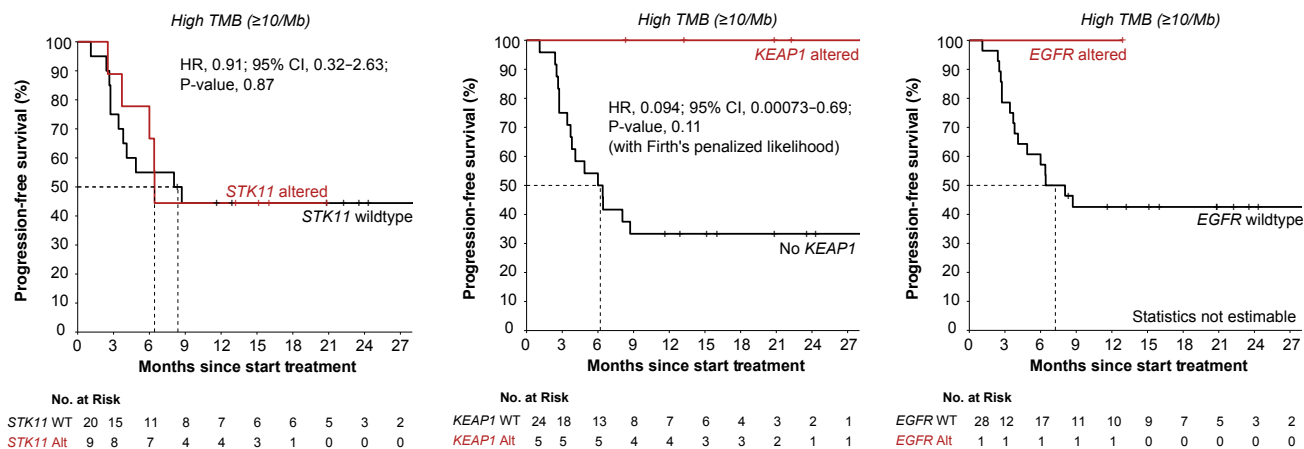
B. As A, but for PFS in patients with a high (≥ 10 muts/Mb) TMB.

C. As A, but for patients with a high (≥ 10 muts/Mb) TMB.

A



B



C

