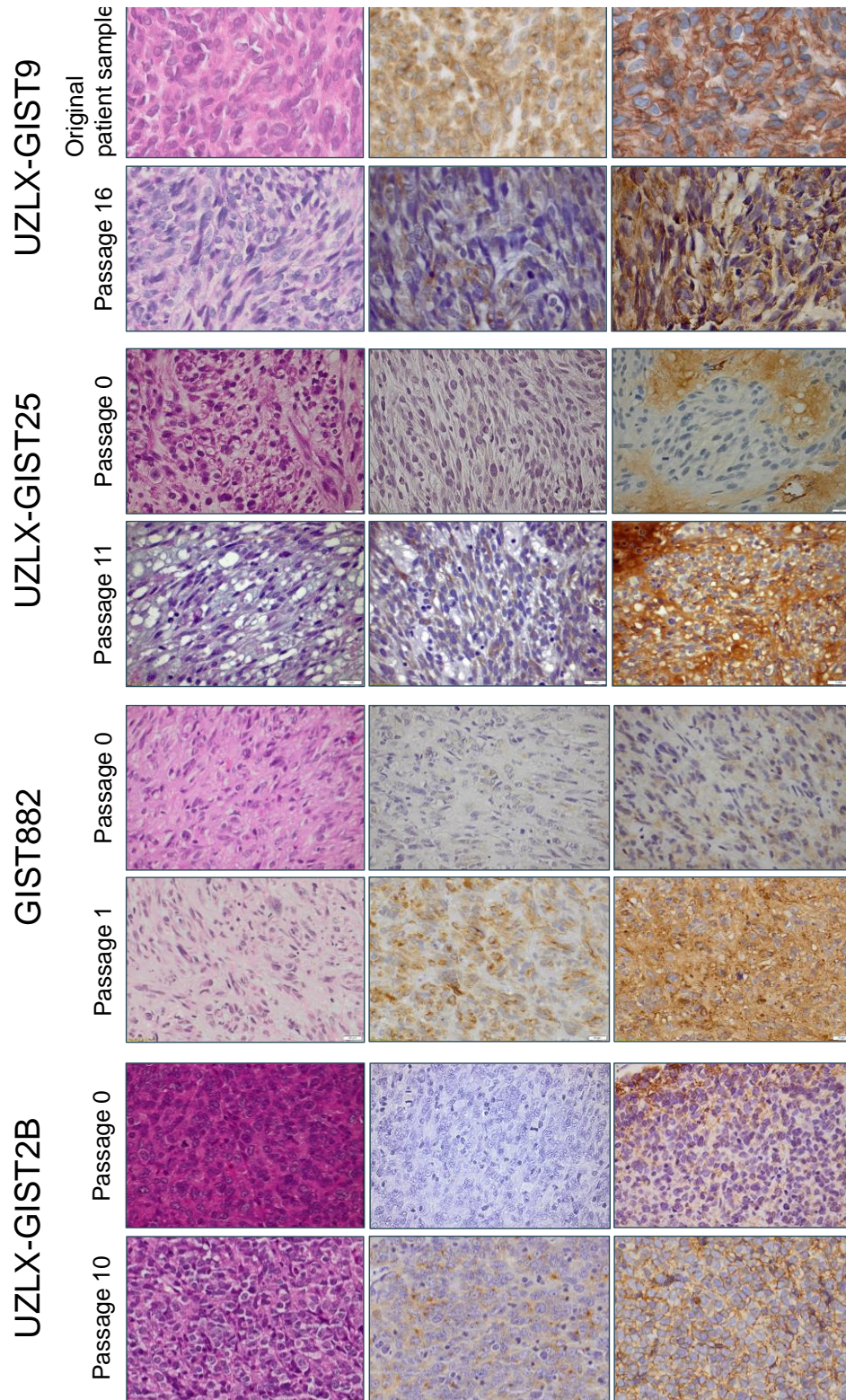


Supplemental Figure 1. Histopathological characteristics. The same histopathological characteristics were seen in the original donor tumors or an early passage of the patient- and cell-line derived xenograft model, and the corresponding passage of the xenograft used in the experiments. All models used in the experiments stain positively for KIT and DOG-1, which confirms the GIST diagnosis. H&E: hematoxylin and eosin; DOG-1: Discovered On GIST 1.



One histologically representative picture per experiment; magnification 400x, 1mm \leftrightarrow