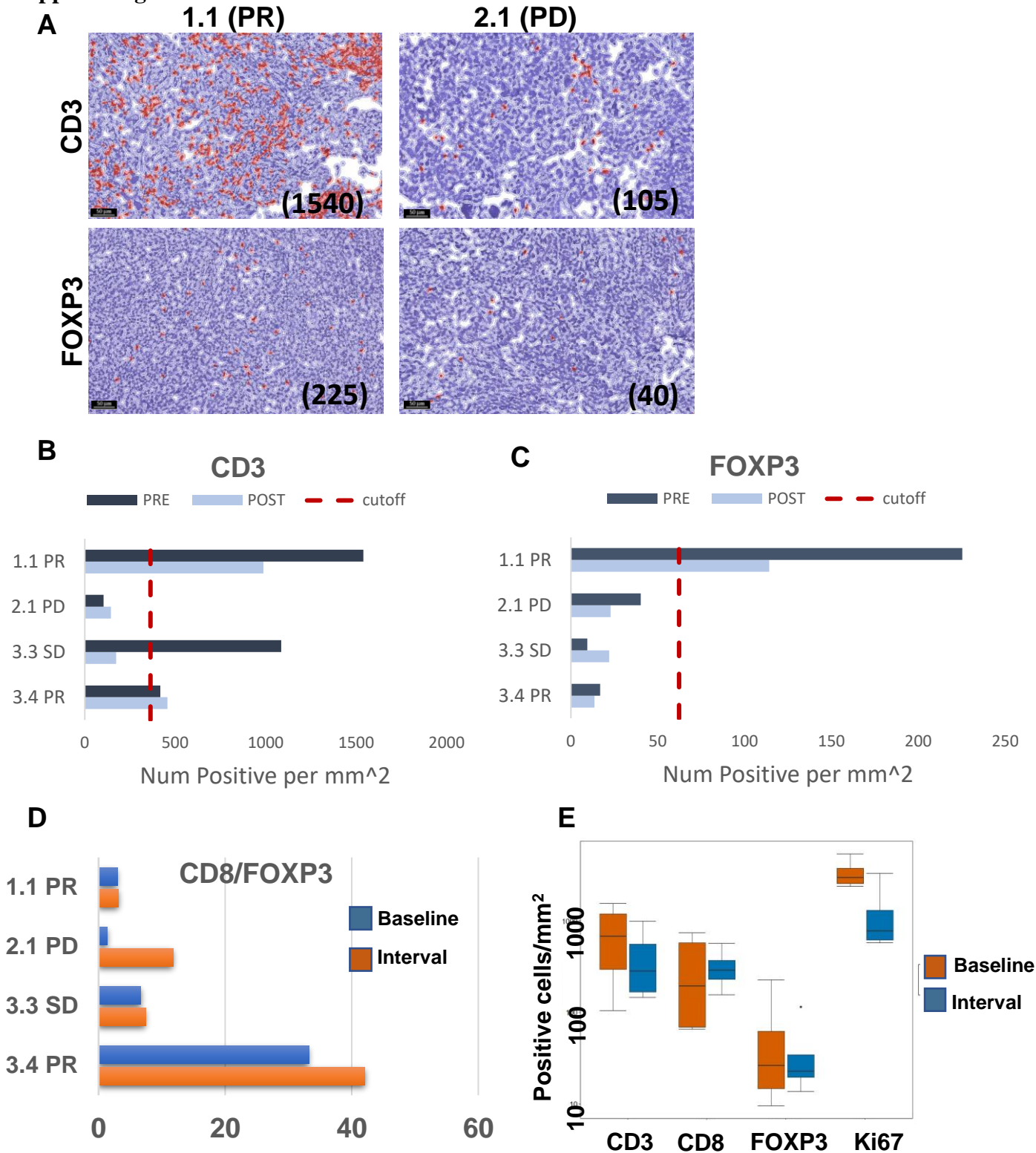


Supplem. Fig. 6



Supplem. Fig. 6. Profiling of tissue immune infiltrates via IHC followed by QuPath automatic counting. (A) Tumor sections from two patients with partial response from cohort 1 (1.1 PR) and progressive disease from cohort 2 (2.1 PD) have been stained by IHC for CD3 (top) and FOXP3 (bottom). Scanned slides were analyzed by QuPath. Positive cells are identified in red and automatically counted. Number of positive cells per mm² are shown in parentheses. Scale bar, 50 μ m. (B and C) Numbers from Pre (dark blue) and Post three rounds of CKM (light blue) are shown. Red lines represent cut-off of infiltration for tumors that are considered “hot” for the respective marker, as defined in Ref. 37.