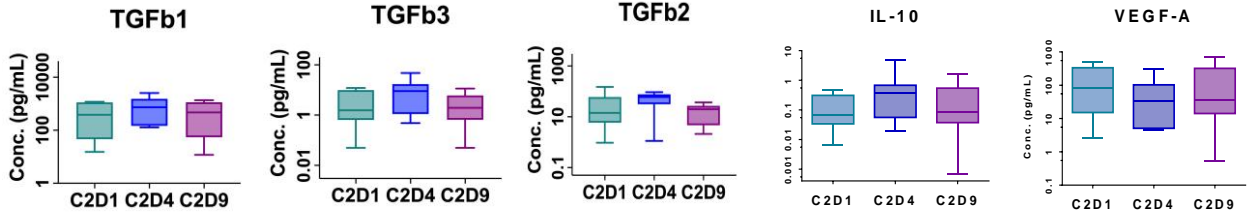


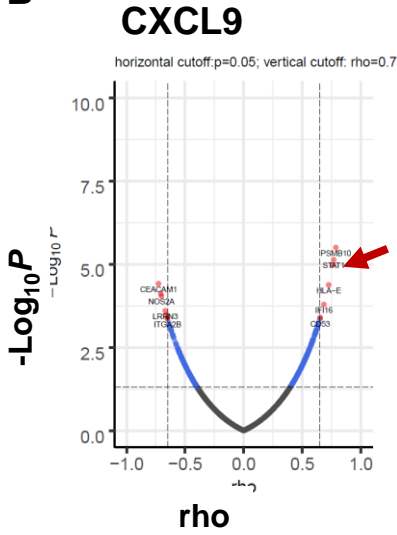
Supplem Fig. 4

Chemo-Immunotherapy- Cycle 2

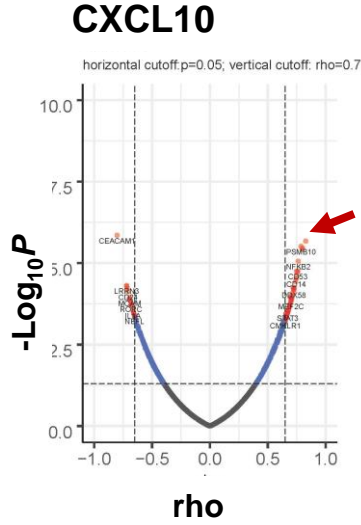
A



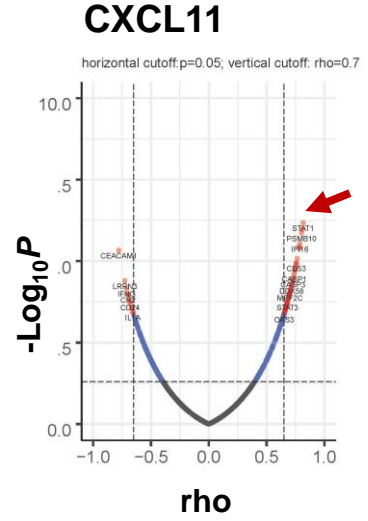
B



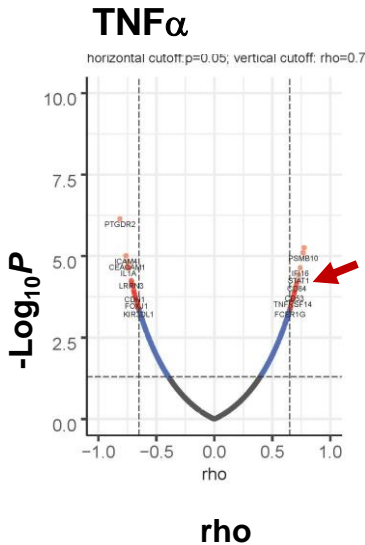
	rho	p	q
STAT1	0.77	7E-06	0.003



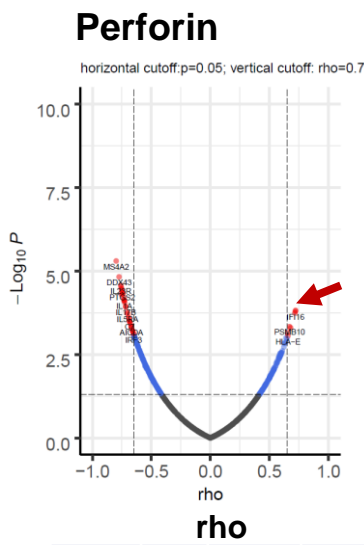
	rho	p	q
STAT1	0.83	2E-06	6E-04



	rho	p	q
STAT1	0.82	7E-07	0.0004



	rho	p	q
STAT1	0.77	7E-06	0.003



	rho	p	q
STAT1	0.72	0.0002	0.006

Supplem. Fig. 4. (A) MSD measurements of TGF beta 1-3, IL-10 and VEGF in IP washes collected at cycle 2 day1, 4 and 9. No significant changes (ANOVA). (B) STAT1 is the top gene for correlation with CXCL10, CXCL11 and perforin. Correlation volcano plots pointing to high positive correlation between each marker and all common DE genes. STAT1 (arrow) is the top gene for correlation with CXCL10, CXCL11 and perforin and among the highest for CXCL9 and TNF $\alpha$ .