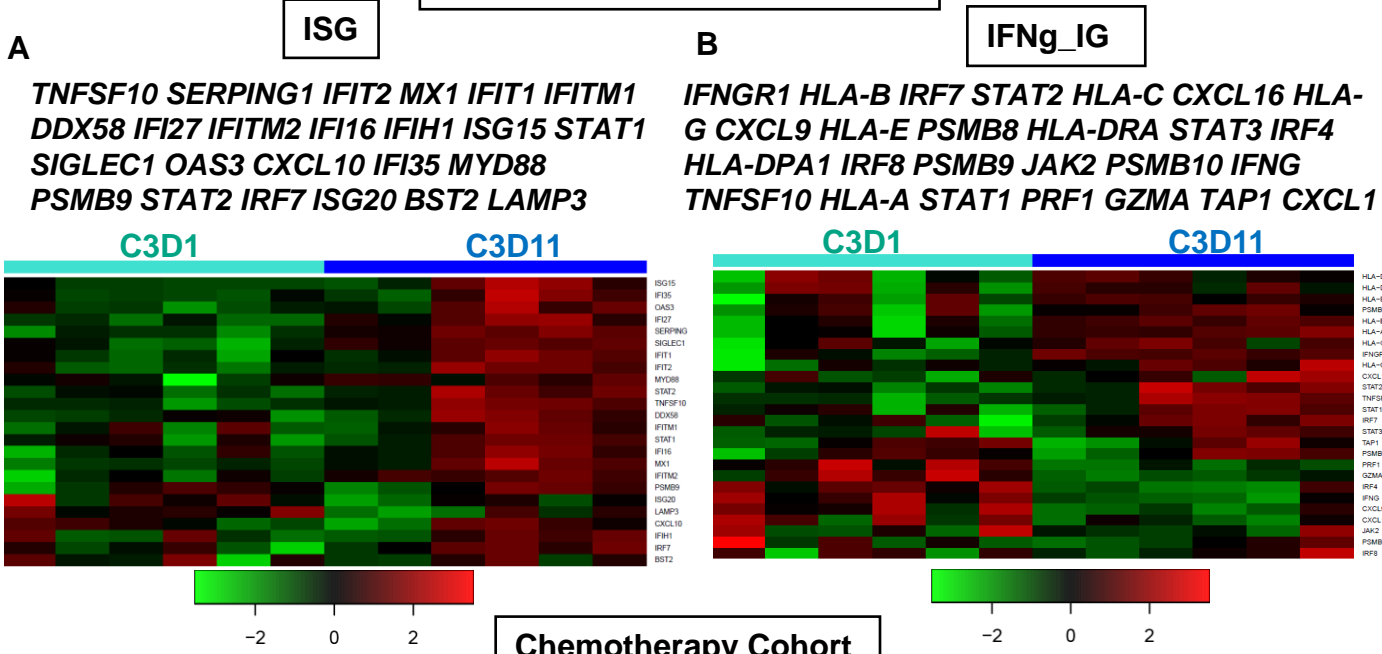
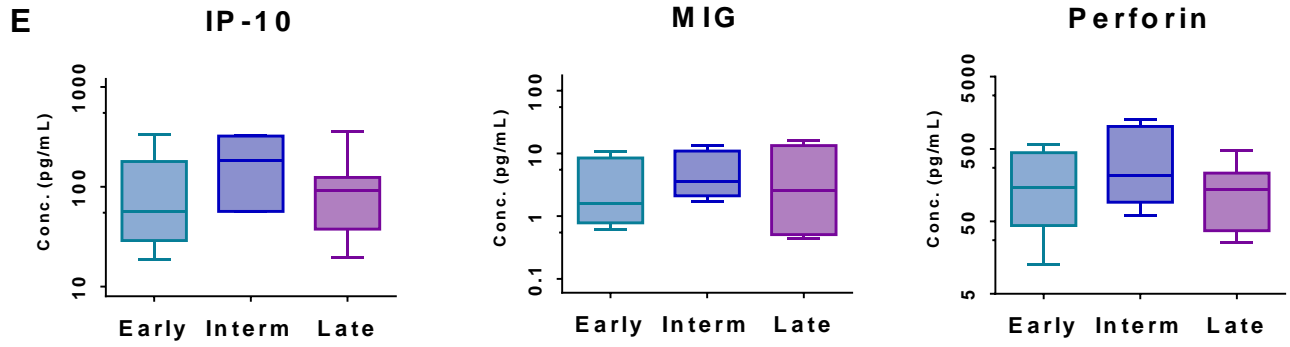
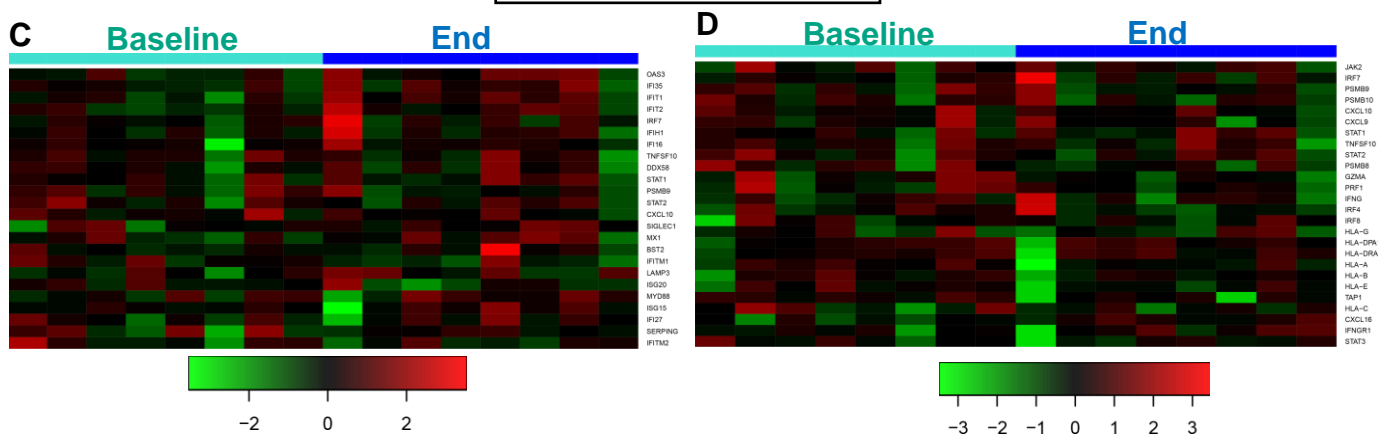


Chemo-Immunotherapy Cohort



Chemotherapy Cohort



**Suppl Fig 3.** Chemo-immunotherapy cohort (A and B) versus chemotherapy alone cohort (C-E). (A-B) Heatmaps of n=24 interferon stimulated genes (ISG, A) and n=26 interferon gamma induced genes associated with survival (IFN $\gamma$ \_IG, B), after cycle 3 (C3D11 vs C3D1) of chemo-immunotherapy, measured by NanoString. The DE genes used for each analysis are listed in the textbox and as shown in Fig. 2D and E. (C -E) Data from a reference cohort of n=8 recurrent ovarian cancer patients, treated with six rounds of chemotherapy (IP cisplatin) alone, as standard of care. Heatmaps using ISG (C) and IFN $\gamma$ \_IG (D) at end of treatment compared to baseline, prior tot treatment initiation (IP wash cells, NanoString). MSD measurement of IP-10 (CXCL10), MIG (CXCL9) and perforin in IP wash fluids collected at baseline, intermediate (cycles 2-3) or late (cycles 5-6).