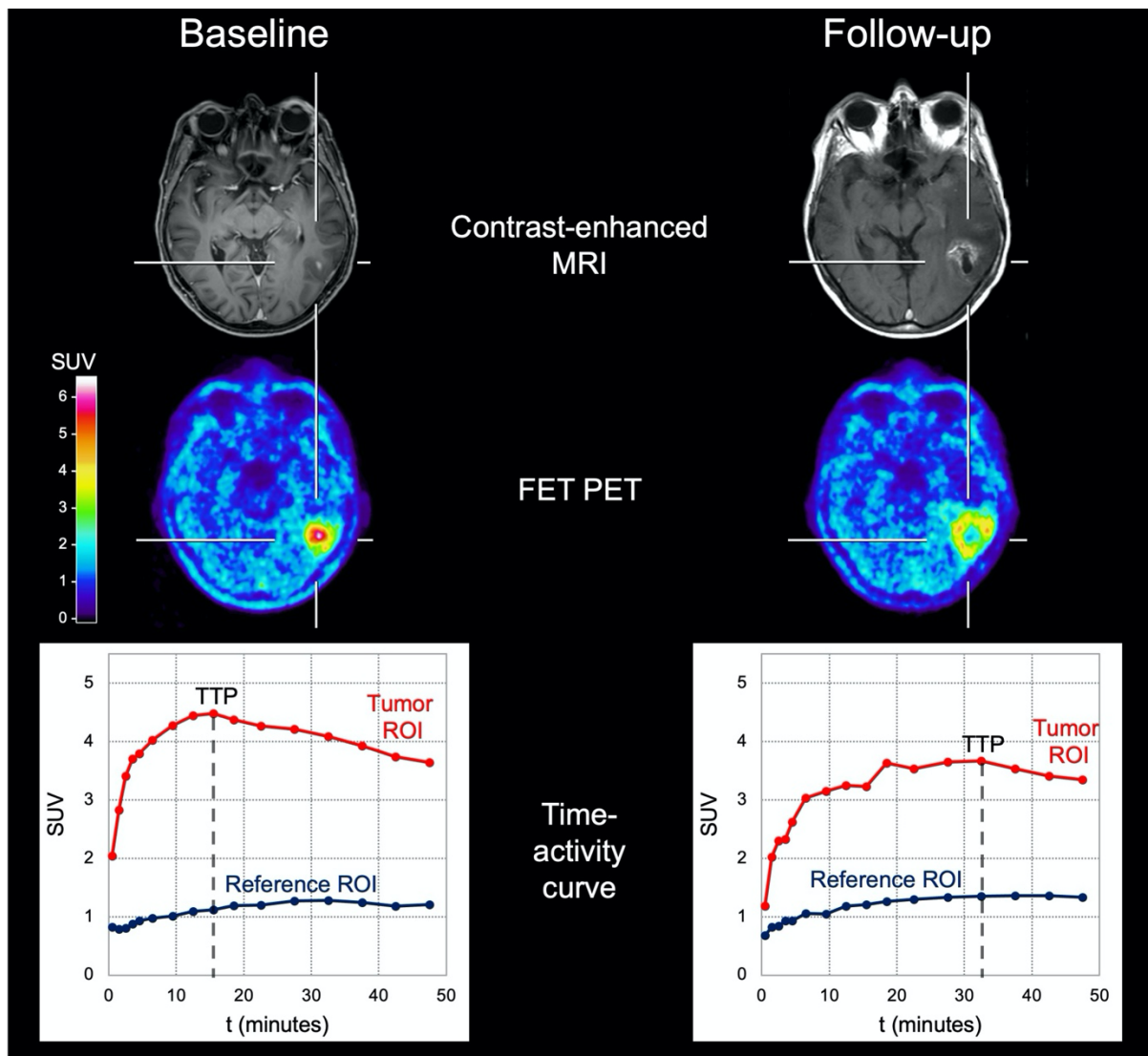


## Supplemental Figure 1



**Supplemental Figure 1:** Contrast-enhanced MRI, FET PET, and corresponding time-activity curves of a 70-year-old female patient with a newly diagnosed glioblastoma (IDH-wildtype, MGMT promoter methylated) before initiation of lomustine-temozolomide chemoradiation (left column) and 7 weeks after radiotherapy completion (right column). For clarity, MRI and FET PET images are the same as shown in Figure 1. Compared to baseline, MRI at follow-up suggested tumor progression, whereas the corresponding follow-up FET PET indicated a decrease of metabolic activity. Relative to baseline, the time-to-peak (TTP) value at follow-up increased from 15.5 to 32.5 minutes (dashed lines in the time-activity curves, images at the bottom), additionally supporting the diagnosis of pseudoprogression.