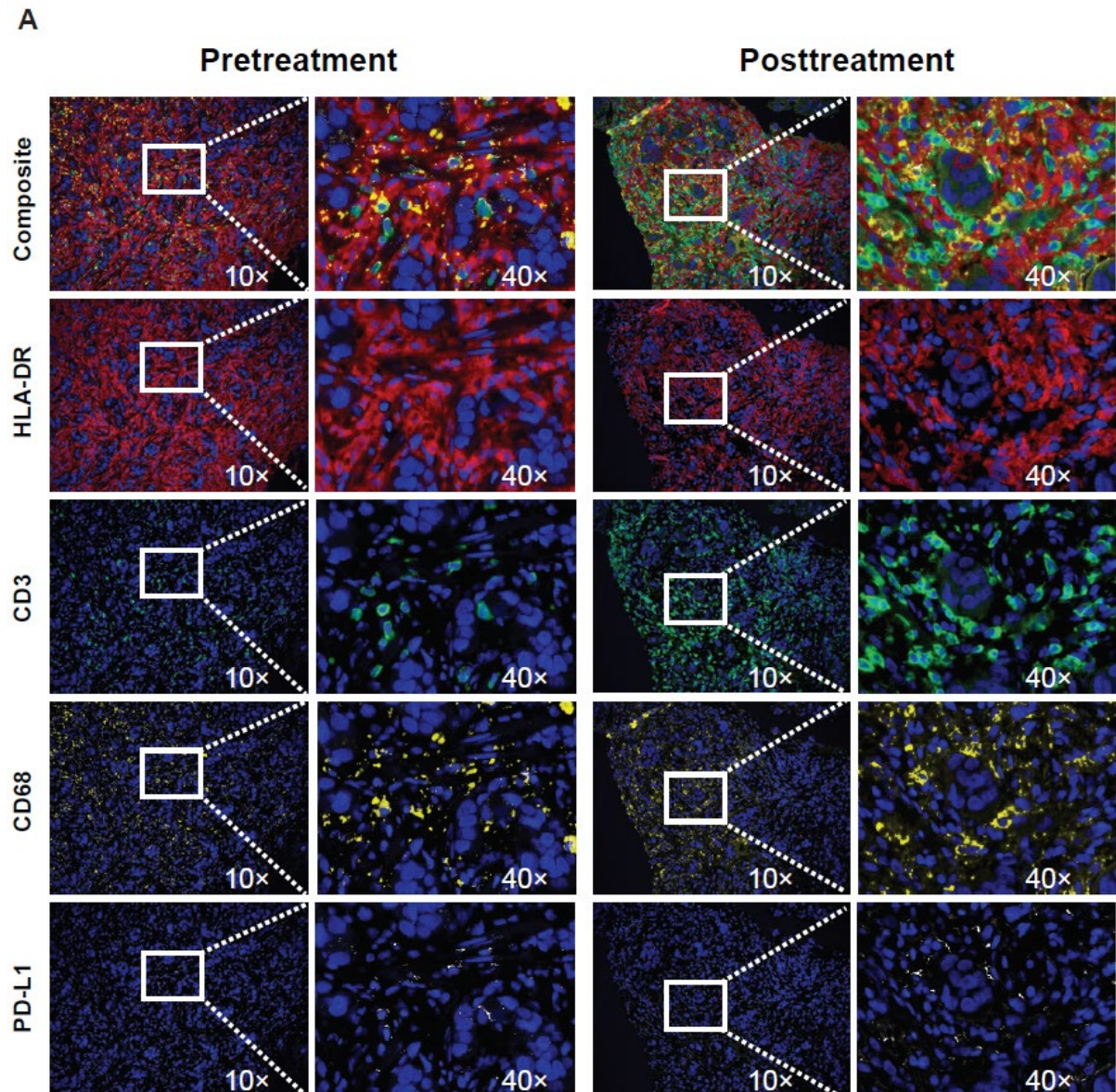


**Supplementary Figure S3. T-cell infiltration in patients with breast cancer. A)** Staining for HLA-DR, CD3, CD68, PD-L1, and DAPI in samples taken before and after ABBV-085 treatment. **B)** Absolute numbers of CD3+ and CD8+ T cells in pre- and posttreatment samples from four individual patients. PD-L1, programmed cell death protein 1 ligand 1.



**B**

