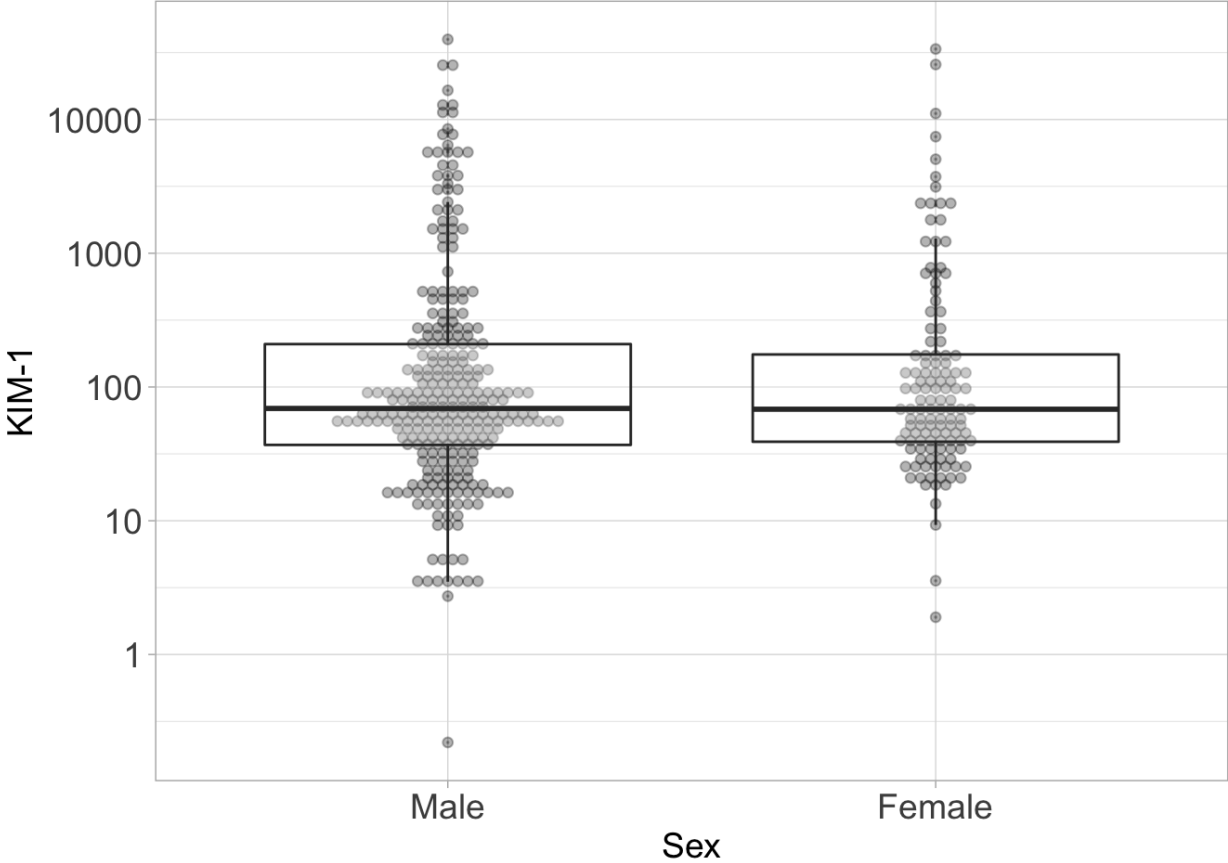
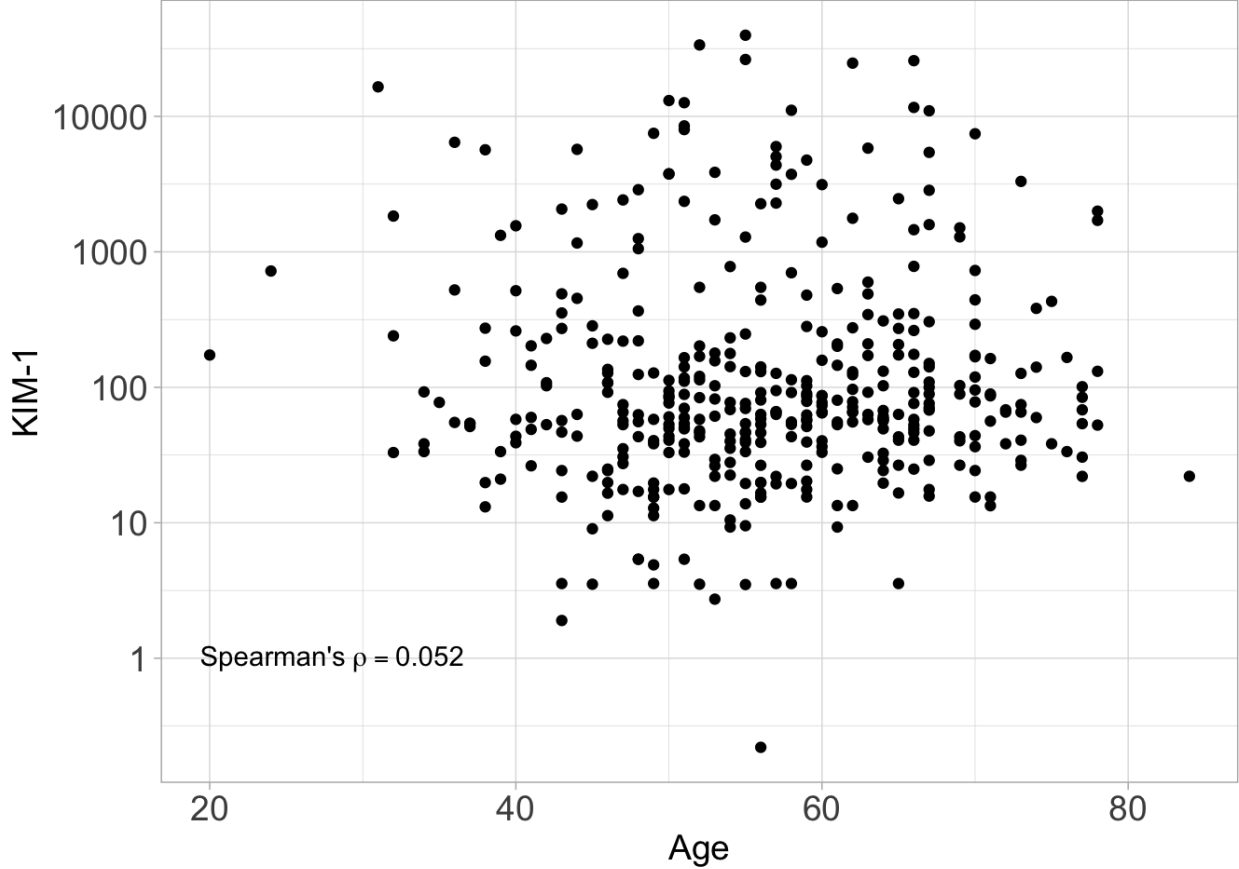


Supplemental Figure S2: Relationship between baseline KIM-1 and clinical / pathologic features

A) Baseline KIM-1 stratified by sex
Wilcoxon $p = 0.73$

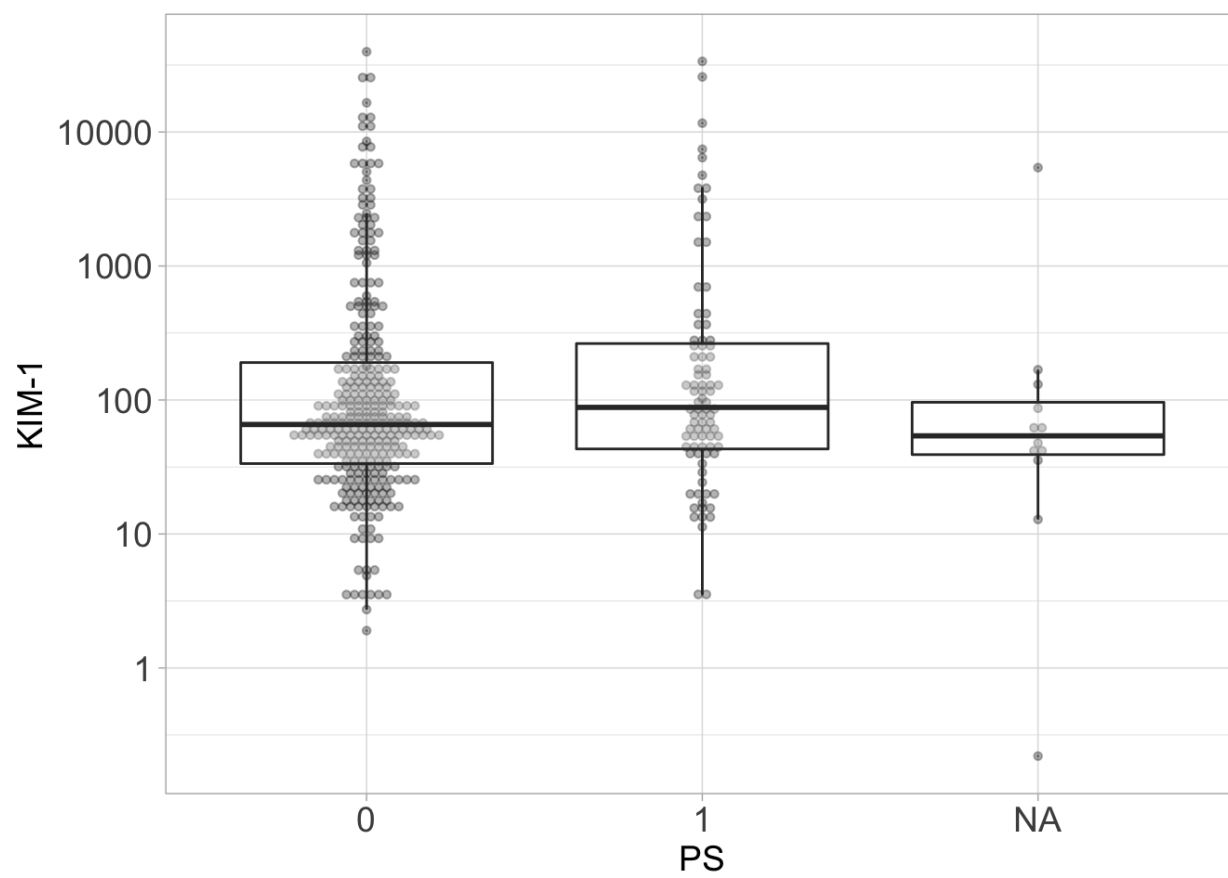


B) Baseline KIM-1 versus patient age



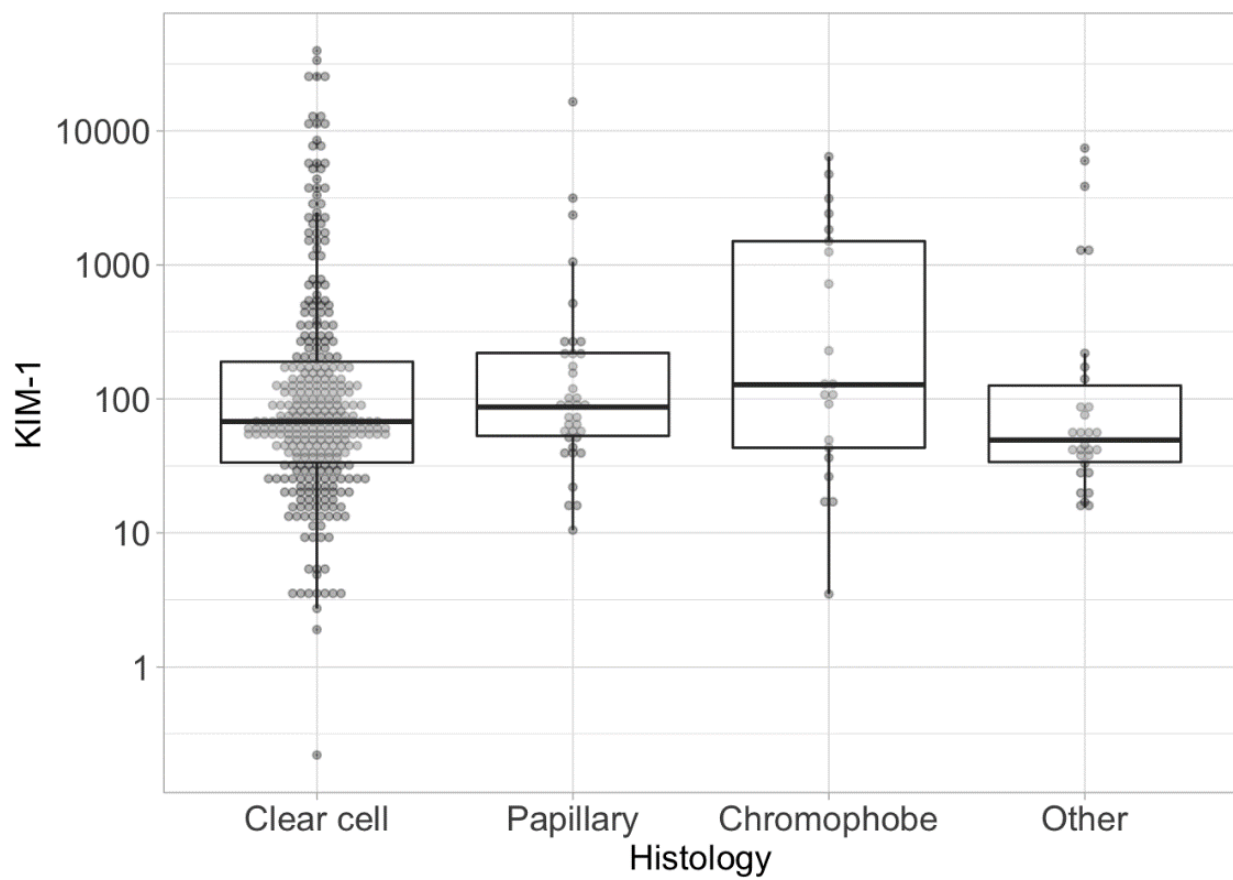
C) Baseline KIM-1 stratified by ECOG performance status

Kruskal-Wallis p = 0.17



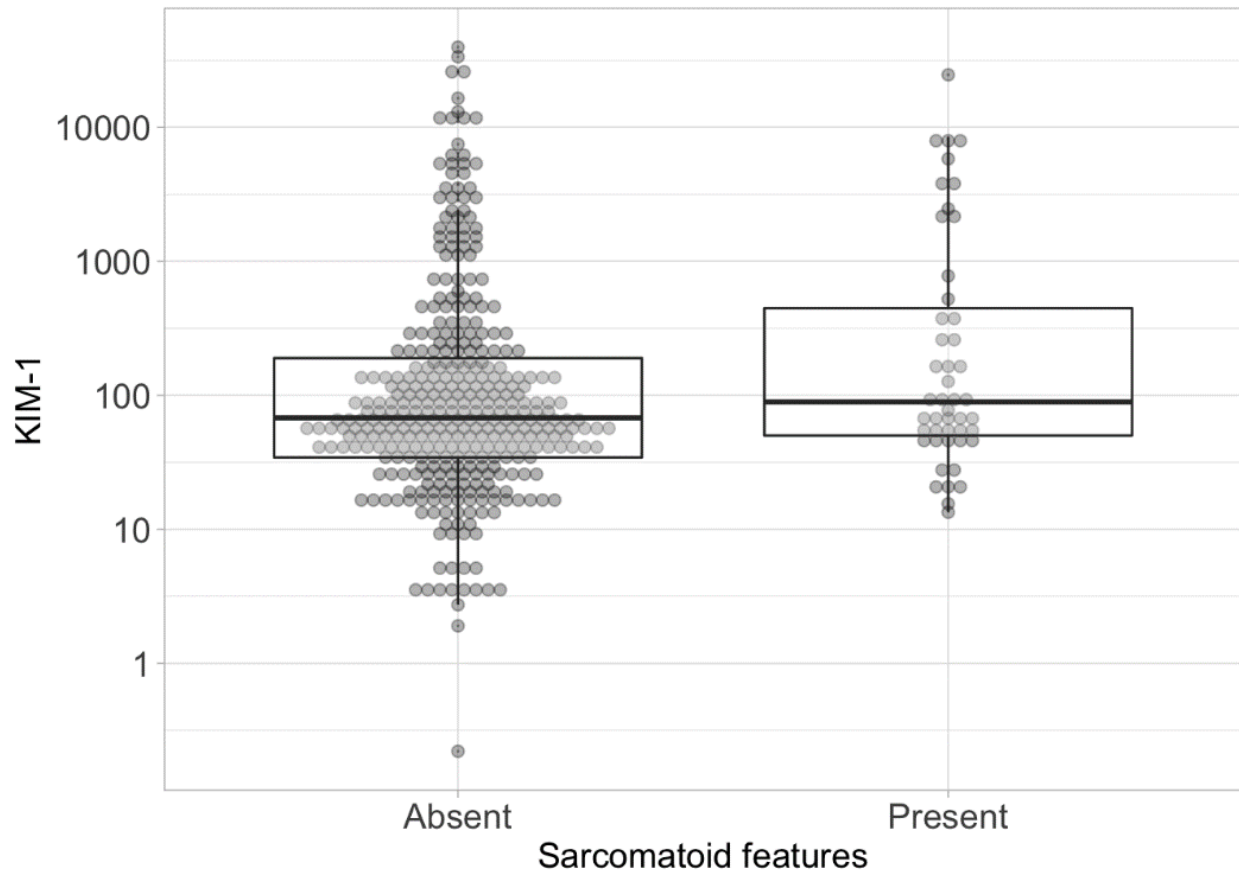
D) Baseline KIM-1 stratified by tumor histology

Kruskal-Wallis p = 0.20



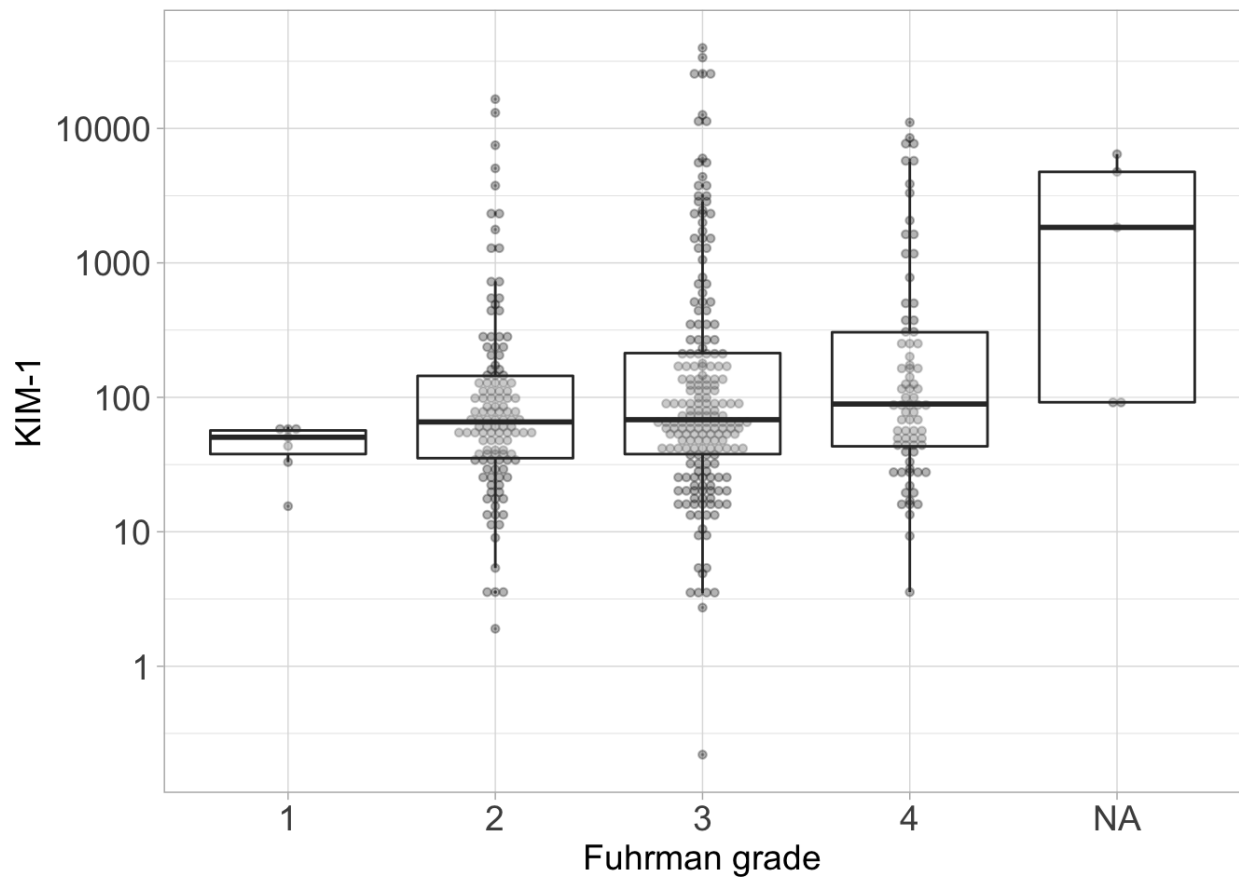
E) Baseline KIM-1 stratified by sarcomatoid features

Wilcoxon $p = 0.066$



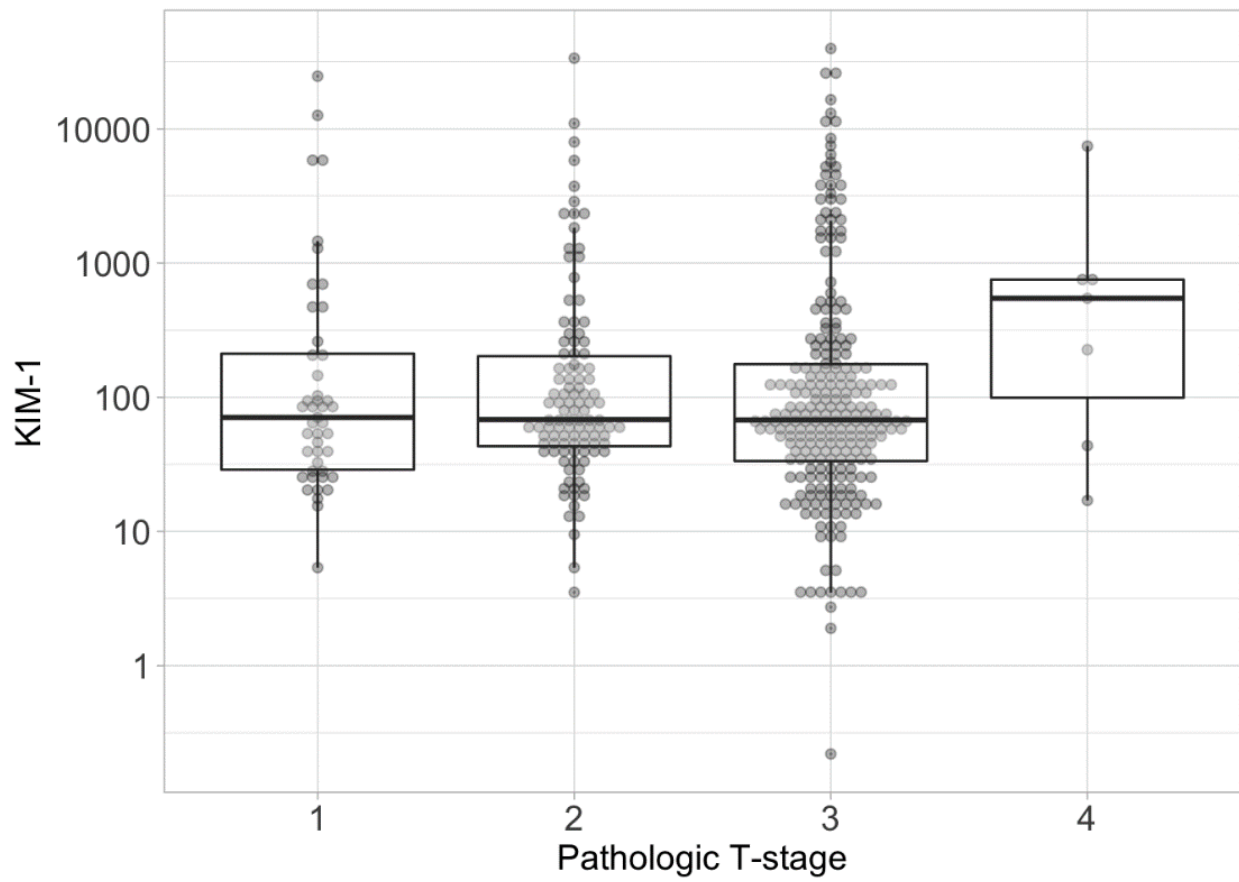
F) Baseline KIM-1 stratified by Fuhrman grade

Jonckheere-Terpestra $p = 0.062$



G) Baseline KIM-1 stratified by pathologic T-stage

Jonckheere-Terpestra $p = 0.89$



H) Baseline KIM-1 stratified by pathologic N-stage

Kruskal-Wallis $p = 0.14$

