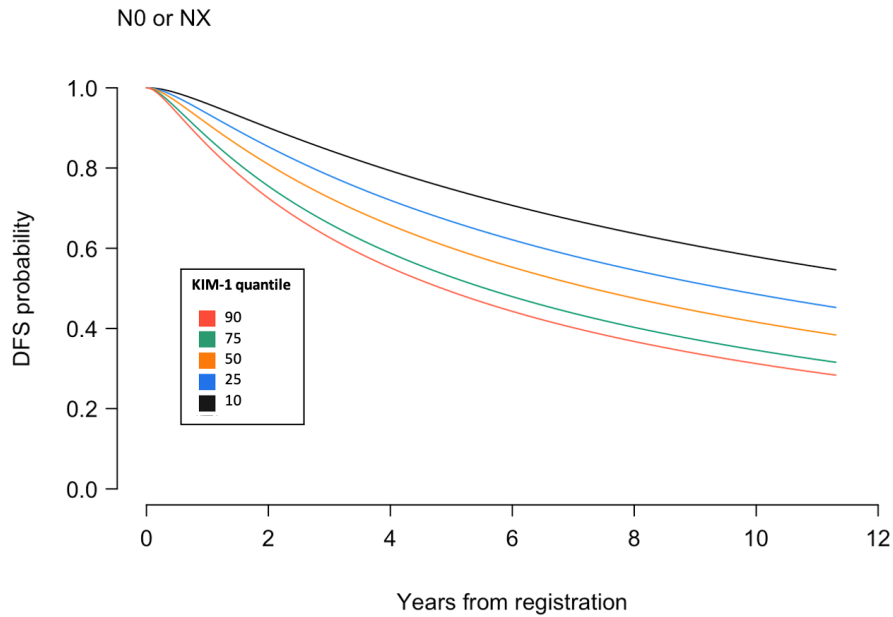
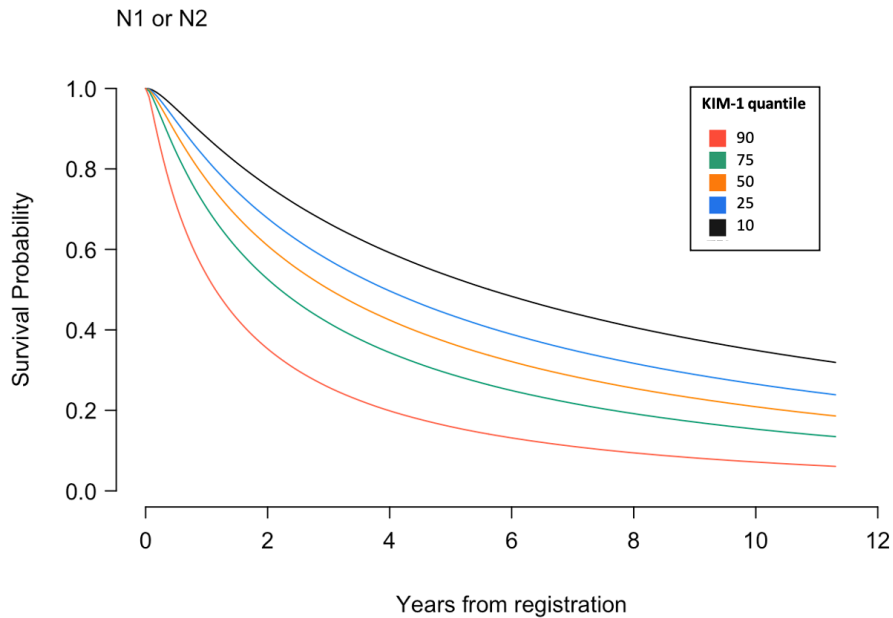


## Supplemental Figure S5: Modelled relationship between KIM-1 and disease free survival

A)



B)



A multivariable lognormal accelerated failure time (AFT) model was used to assess the association between post-nephrectomy plasma KIM-1 and disease-free survival (DFS). The model was adjusted for sex, ECOG performance status, T and N stage, Fuhrman grade, and tumor histology including presence of sarcomatoid features. (Wald p-value <0.0001 for differences in KIM-1.)