

Fig. S6

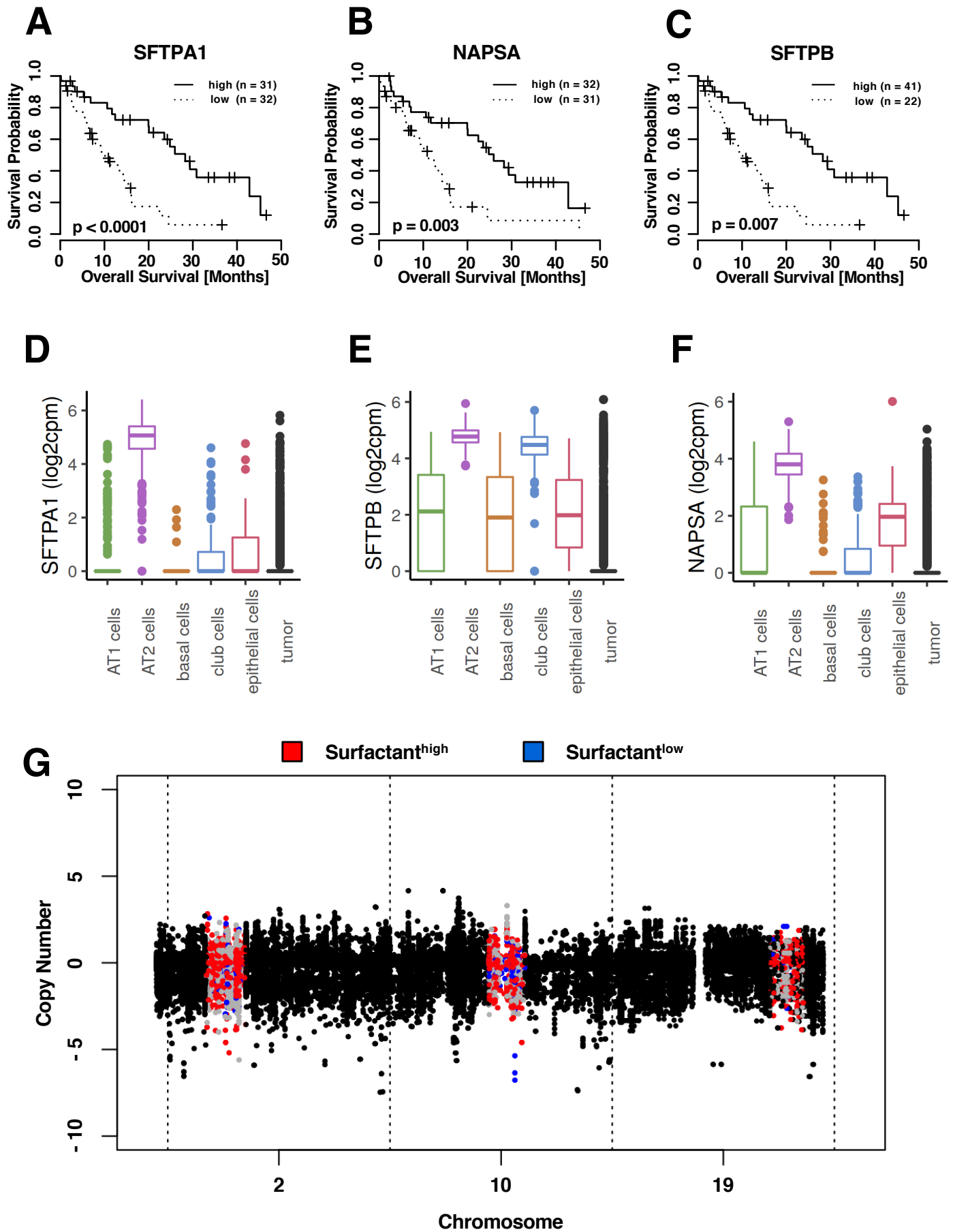


Figure S6. Details on the gene expression, single-cell sequencing, and copy number alteration data. **A-C** Univariate survival analysis of SFTPA1, SFTPB, and NAPSA, using the same method as above, showed that each of the genes has an independent impact on survival. **D-F** Boxplots comparing the expression of surfactant genes across tumor cells and aveoloar cell types in scRNA-seq data set (Lambrecht et al.). **G** Copy number alteration analysis of the three surfactant genes. Copy number data in the chromosomes 2, 10, and 19 were displayed and the gene loci of SFTPA1, SFTPB, and NAPSA were highlighted in blue (surfactant^{low} group) and red (surfactant^{high} group).