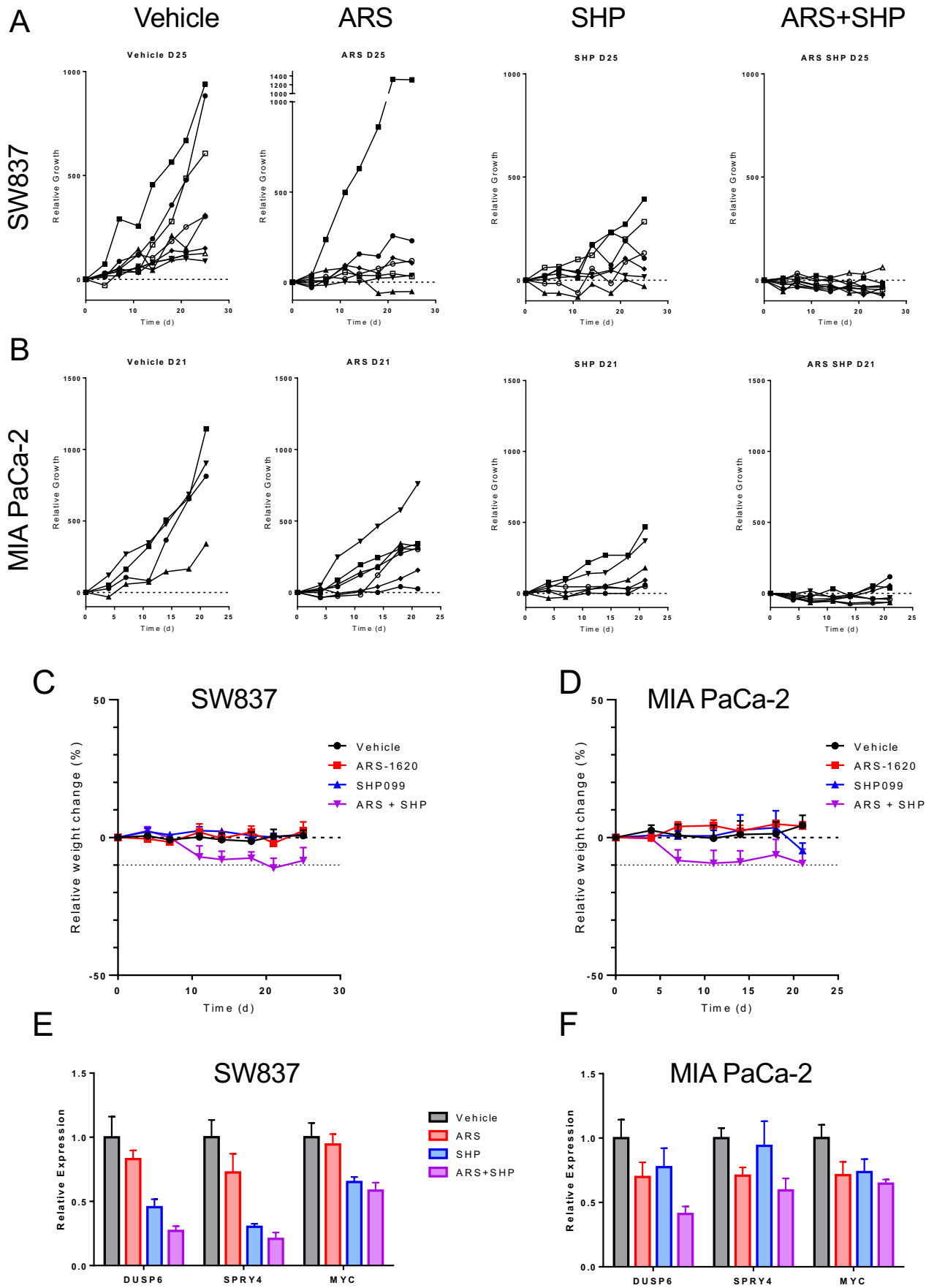


Supplemental Figure 9



Supplementary Figure S9. Combined SHP2 and KRAS^{G12C} inhibition improves efficacy *in vivo*. Individual tumor values for SW837 (A) and MIA PaCa-2 xenografts (B) treated daily with ARS-1620 (200 mg/kg), SHP099 (75 mg/kg), or both for 25 and 21 days respectively from Figure 4. (C, D) Percent body weight change for xenograft models from Figure 4. (E,F) SW837 and MIA PaCa-2 tumors treated with ARS-1620 (200 mg/kg), SHP099 (75 mg/kg), or both for 4 days and Taqman quantitative PCR was performed to monitor changes in *DUSP6*, *SPRY4*, and *MYC* gene transcription and *β-actin* was used as an endogenous control.