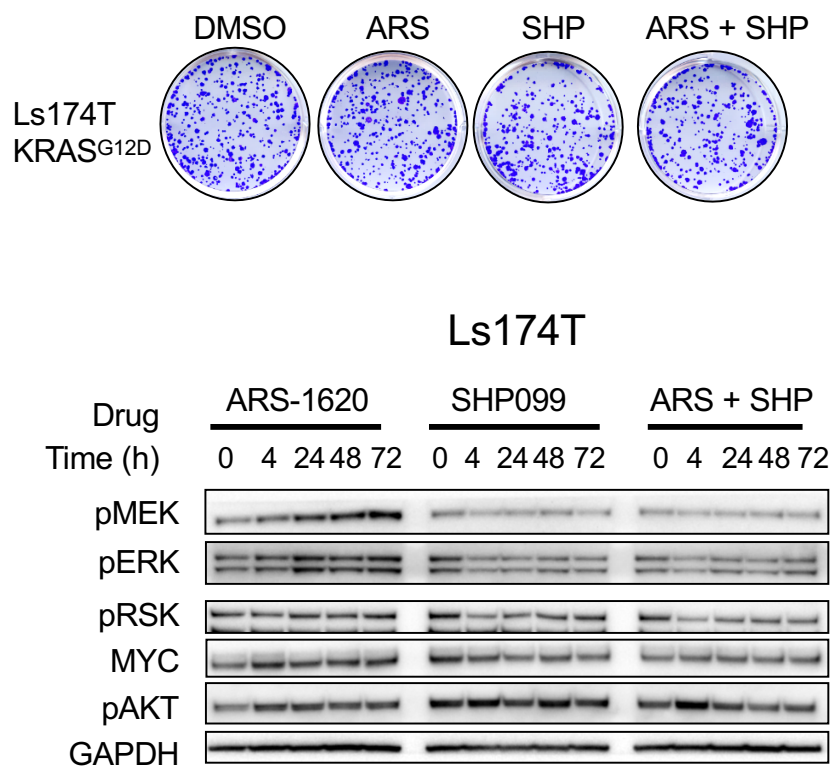


Supplemental Figure 8



Supplementary Figure S8. KRAS^{G12C} and SHP2 inhibition does not inhibit the growth of signaling of a non-KRAS^{G12C} mutant cell line. (Top) The KRAS^{G12D} mutant colon line Ls174T was treated with ARS-1620 (1 μ M), SHP099 (10 μ M), or a combination for 10-14 days and then stained with crystal violet. (Bottom) Ls174T cells were treated with ARS-1620 (1 μ M), SHP099 (10 μ M) or a combination for 0, 4, 24, 48, and 72 h. Blot analysis was performed for pMEK, pERK, pRSK, pAKT, and total MYC with GAPDH as a loading control.