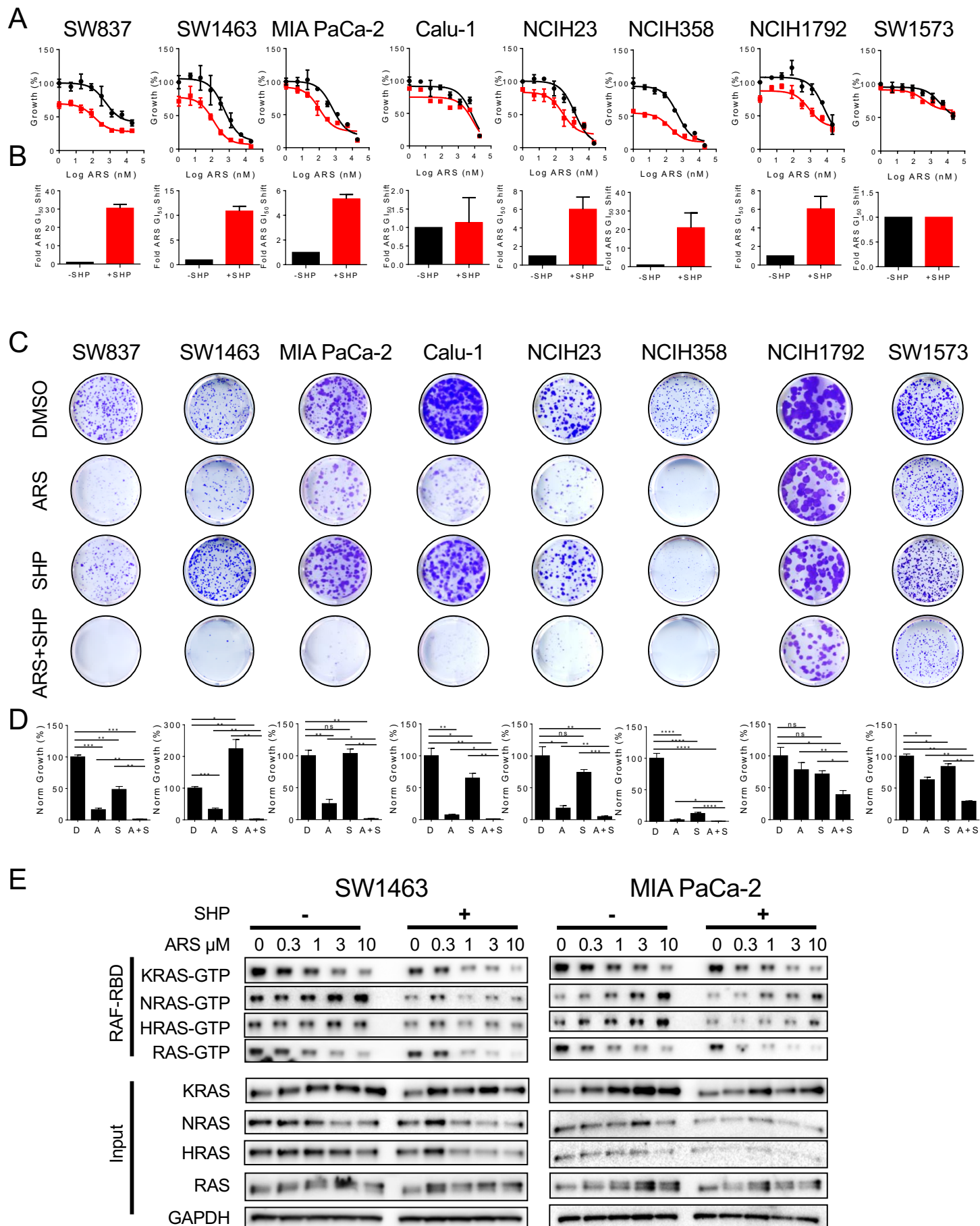


# Supplemental Figure 7



**Supplementary Figure S7. SHP2 inhibition enhances the efficacy of KRAS<sup>G12C</sup> inhibition. (A)**

Cell lines were treated for 72 h with a dose titration of ARS-1620 alone or in the presence of SHP099 (10  $\mu$ M) and viability was measured by CellTiter-Glo. (B) ARS-1620 fold GI<sub>50</sub> shift values graphed as mean $\pm$ SEM for n=3 assays in (B). (C) Crystal violet stain of cell lines treated with ARS-1620 (1  $\mu$ M), SHP099 (10  $\mu$ M), or a combination for 10-14 days (D) Quantification of assays in (C), statistical significance was evaluated by Student's *t*-test, where \*:  $p < 0.05$ , \*\*:  $p < 0.01$ , \*\*\*:  $p < 0.001$ , \*\*\*\*:  $p < 0.0001$ . (E) SW1463 and MIA PaCa-2 cell lines were treated with 0.3-10  $\mu$ M ARS-1620 alone or in combination with 10  $\mu$ M SHP099 for 48 h and lysates were subject to a RAF-RBD pulldown and blot analysis of KRAS, NRAS, HRAS and total RAS as well as GAPDH as a loading control for input samples