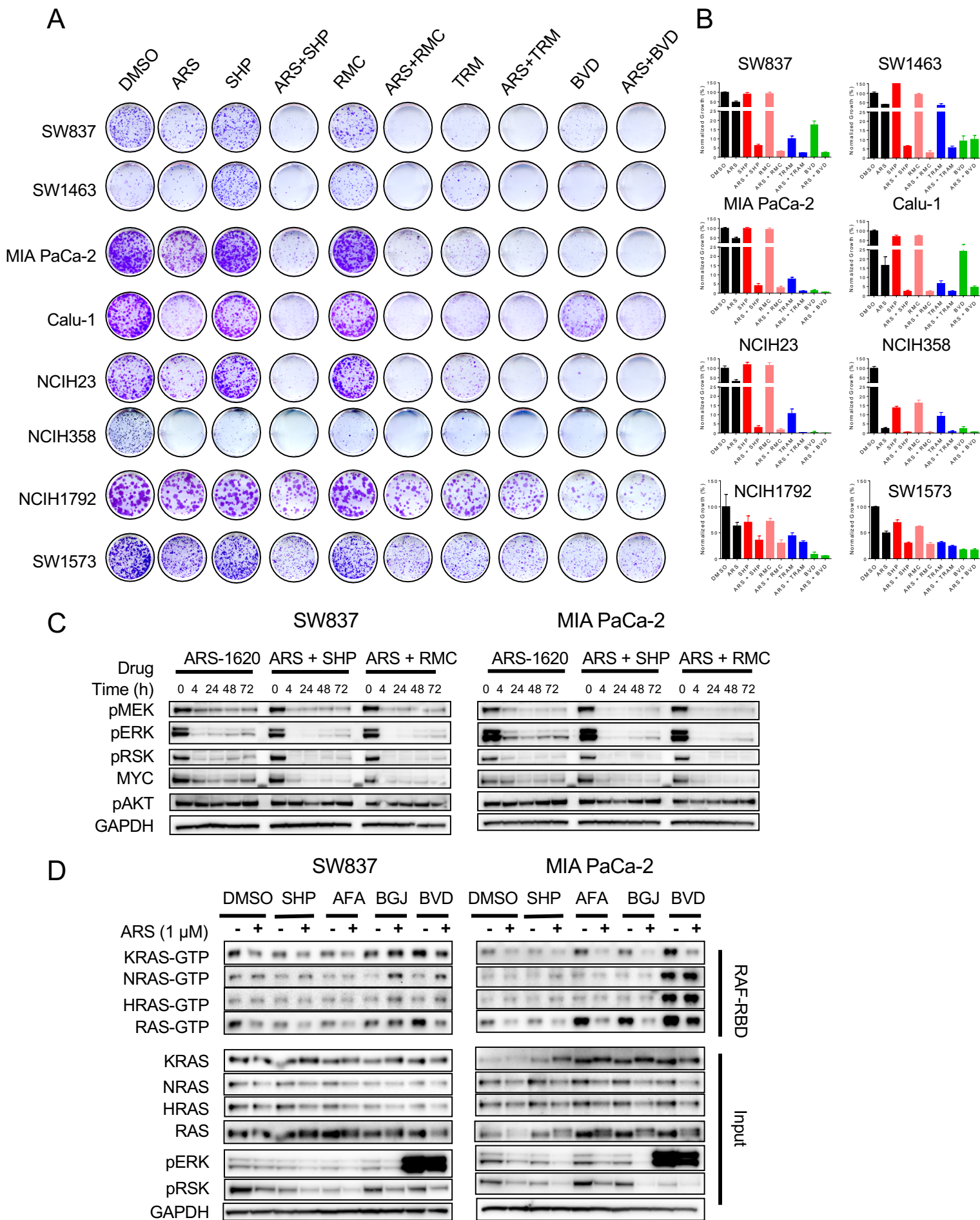


Supplemental Figure 5



Supplementary Figure S5. Combined KRAS^{G12C} and SHP2 or MAPK inhibition improves *in vitro* efficacy. (A) Cell lines treated with ARS-1620 (1 μ M), SHP099 (10 μ M), RMC-4550 (1 μ M), trametinib (10 nM), BVD-523 (1 μ M) or combination for 10-14 days and then stained with crystal violet. (B) Individual quantification of assays in (A) (C) SW837 and MIA PaCa-2 cell lines were treated with ARS-1620 (1 μ M) alone or combined with SHP099 (10 μ M) or RMC-4550 (1 μ M) for 0, 4, 24, 48, and 72 h. Blot analysis was performed for pMEK, pERK, pRSK, pAKT, and total MYC with GAPDH as a loading control. (D) SW837 and MIA PaCa-2 cell lines were treated ARS-1620 (1 μ M), SHP099 (10 μ M), afatinib (1 μ M), BGJ398 (1 μ M) or BVD-523 (1 μ M) or a combination and lysates were subject to a RAF-RBD pulldown and blot analysis of KRAS and total RAS as well as pERK, pRSK and GAPDH for input samples