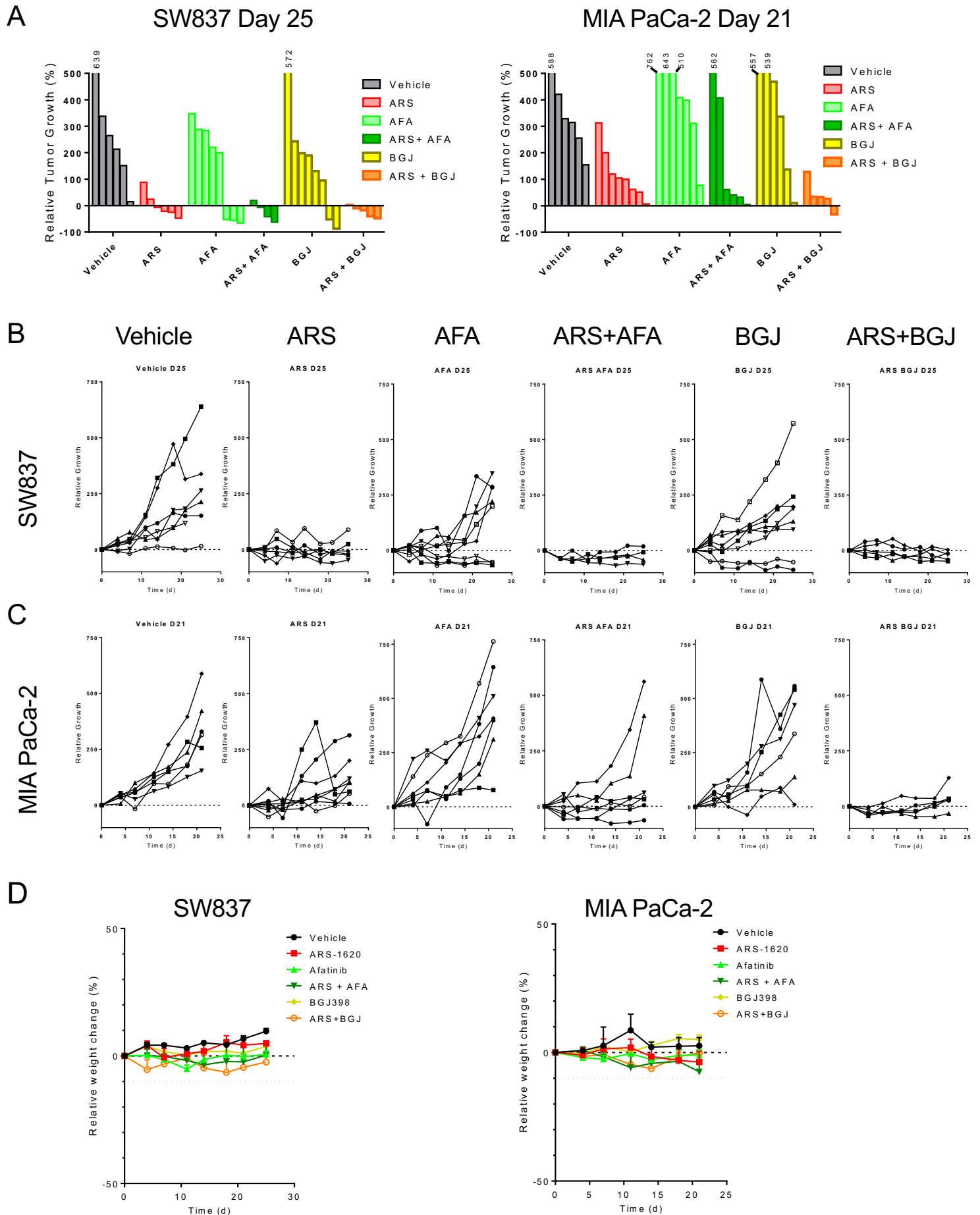


# Supplemental Figure 4



**Supplementary Figure S4. Combined KRAS<sup>G12C</sup> and RTK inhibition improves efficacy *in vivo*.** (A) Waterfall plots of endpoint tumors from SW837 and MIA PaCa-2 xenografts treated daily with ARS-1620 (200 mg/kg), afatinib (12.5 mg/kg), BGJ398 (20 mg/kg) or combination for 25 and 21 days respectively from Figure 2. (B) Individual tumor values for SW837 (B) and MIA PaCa-2 xenografts (C) treated as in (A) from Figure 2. (D) Percent body weight change for xenograft models from Figure 2.