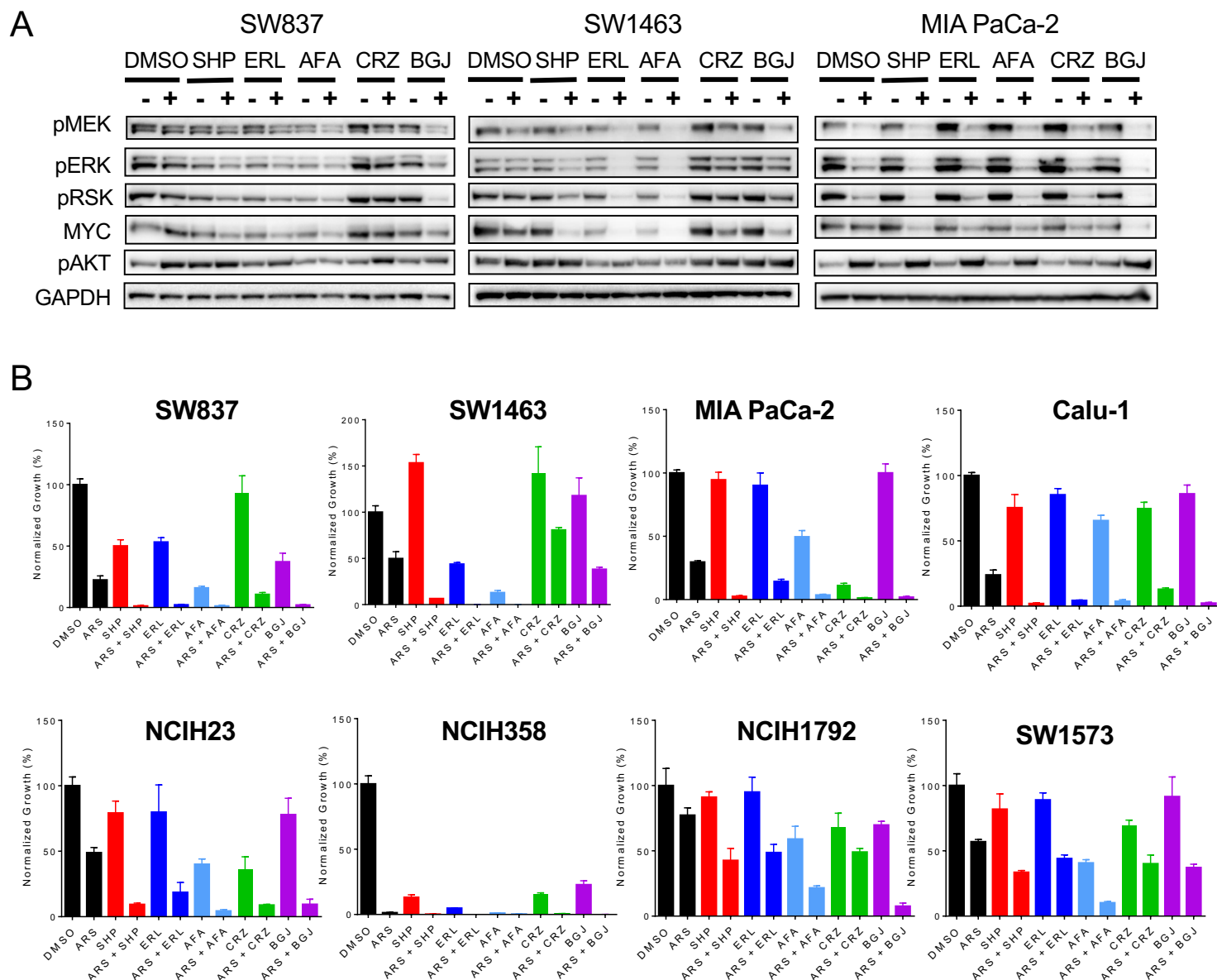


Supplemental Figure 3



Supplementary Figure S3. RTK inhibitors display variable cooperative effects with KRAS^{G12C}

inhibitors across models. (A) Cell lines were treated with ARS-1620 (1 μ M), SHP099 (10 μ M),

erlotinib, afatinib, crizotinib or BGJ398 (all 1 μ M) or a combination for 48 h and blot analysis was

performed for pMEK, pERK, pRSK, pAKT as well as total MYC and GAPDH as a loading control. (B)

Individual quantification of cell lines from Figure 3 treated with ARS-1620 (1 μ M), SHP099 (10 μ M),

erlotinib, afatinib, crizotinib or BGJ398 (all 1 μ M) or a combination for 10-14 days and stained with

crystal violet.