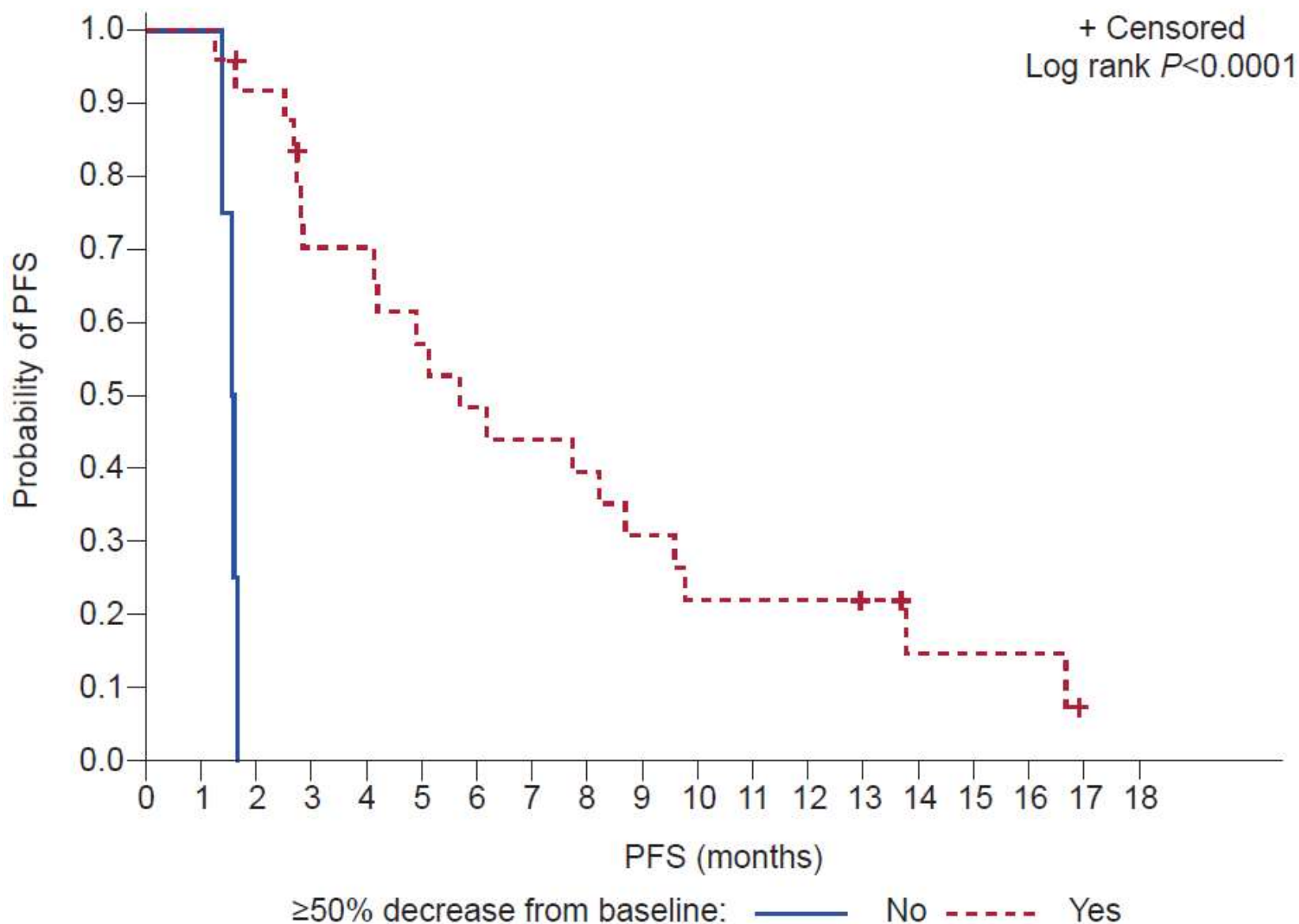


Supplementary Figure 2. PFS Association With $\geq 50\%$ Decrease from Baseline in $AKT1^{E17K}$ at Cycle 2 Day 1 in ctDNA



A $\geq 50\%$ decrease in circulating $AKT1^{E17K}$ at cycle 2 day 1 compared with baseline (cycle 1 day 1), as measured by ddPCR, was associated with improved PFS on treatment. ctDNA, circulating tumor DNA; ddPCR, droplet digital polymerase chain reaction; PFS, progression-free survival.