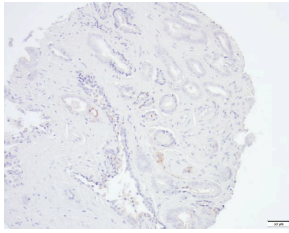
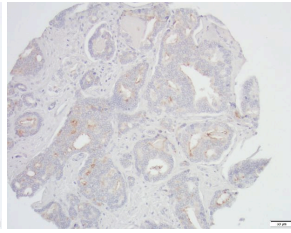


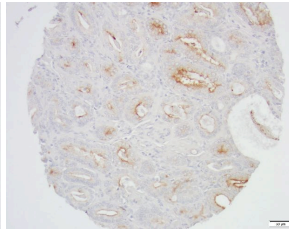
No staining in tumor or normal tissue



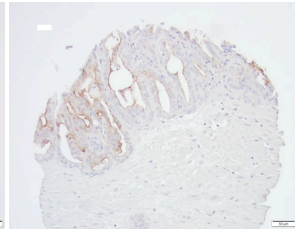
Heterogenous PSMA expression in tumor, 0-1+



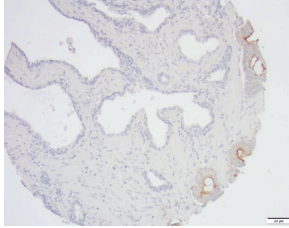
Heterogenous PSMA expression in tumor, 0-2+



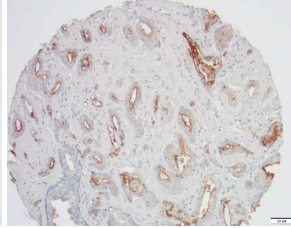
Heterogenous PSMA expression in tumor, 0-2+



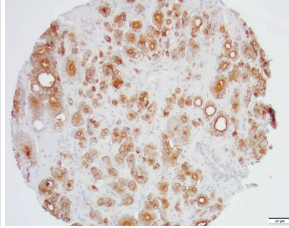
PSMA positive tumor, 2+ (tumor at edge; normal tissue, PSMA negative)



PSMA positive tumor, 2-3+



PSMA positive tumor, 3+



**Supplementary Figure S3. PSMA expression is heterogenous in human PC.**

PSMA expression was assessed on a tissue microarray containing 199 tumor specimens (prostatectomy) from 76 patients with prostate cancer. Representative images of cases with varying PSMA expression intensity and fraction of PSMA-positive cells, respectively. Brown staining indicates PSMA positivity.