

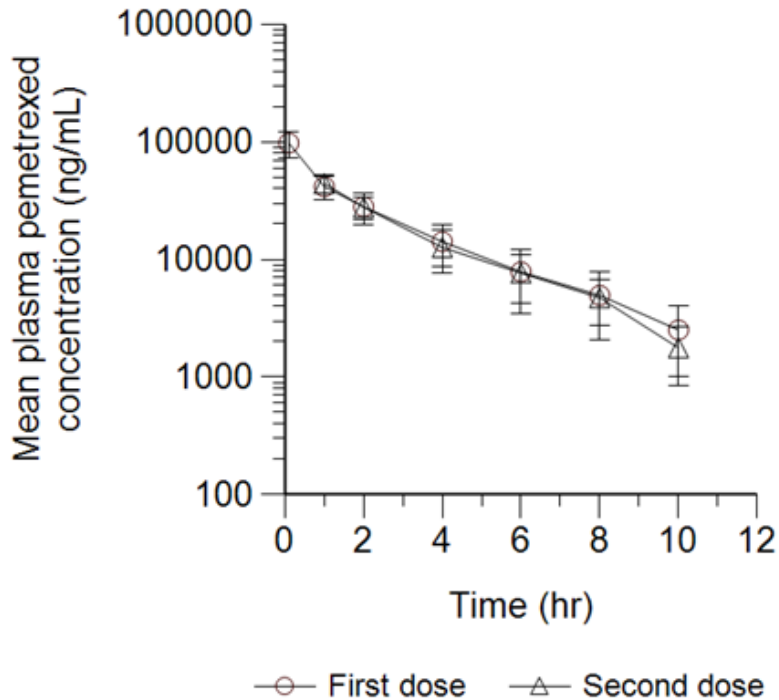
## APPENDIX FIGURES

### Abemaciclib in combination with single-agent options in patients with stage IV non-small cell lung cancer (NSCLC): A phase 1b study

ES Kim et al.

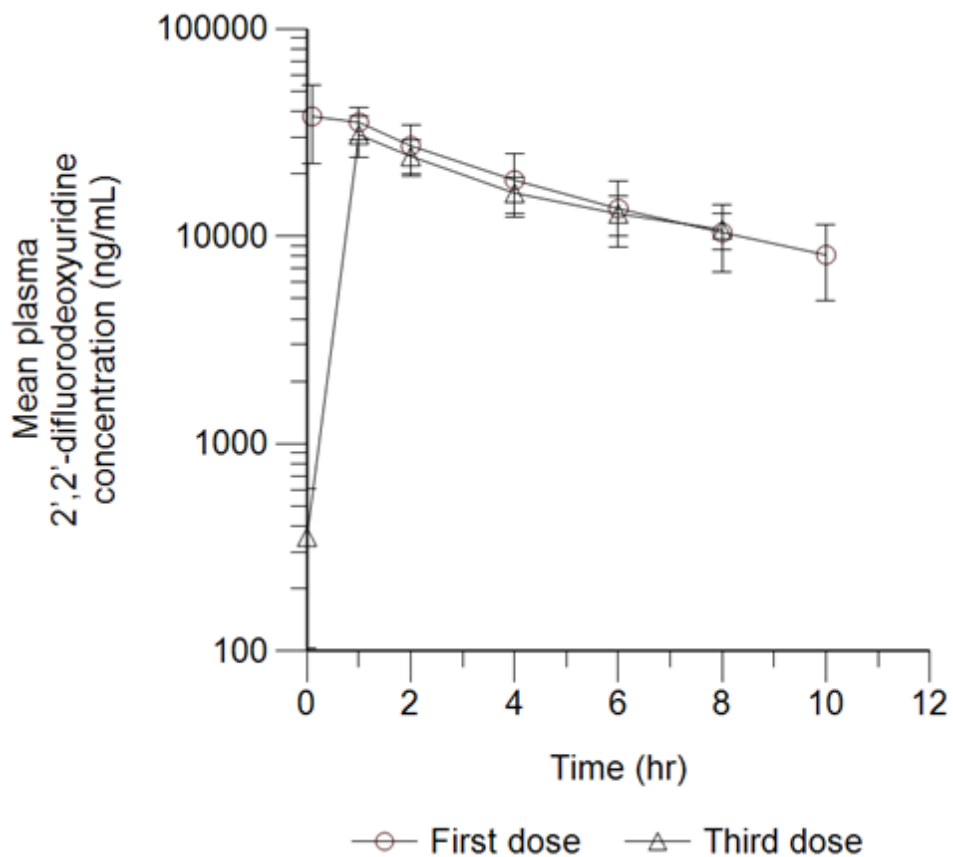
**Figure S1. Pemetrexed plasma concentration over time following coadministration of abemaciclib.**

Pemetrexed ( $500 \text{ mg/m}^2$ ) was administered as an IV infusion over approximately 10 minutes on day 1 of a 21-day cycle in conjunction with oral abemaciclib for the treatment of patients with advanced NSCLC. The graph plots the mean (SD) plasma concentration of pemetrexed over time [ $n = 23$  for first dose (cycle 1) and  $n = 11$  for second dose (cycle 2)].



**Figure S2. Gemcitabine metabolite concentration over time following coadministration of abemaciclib.**

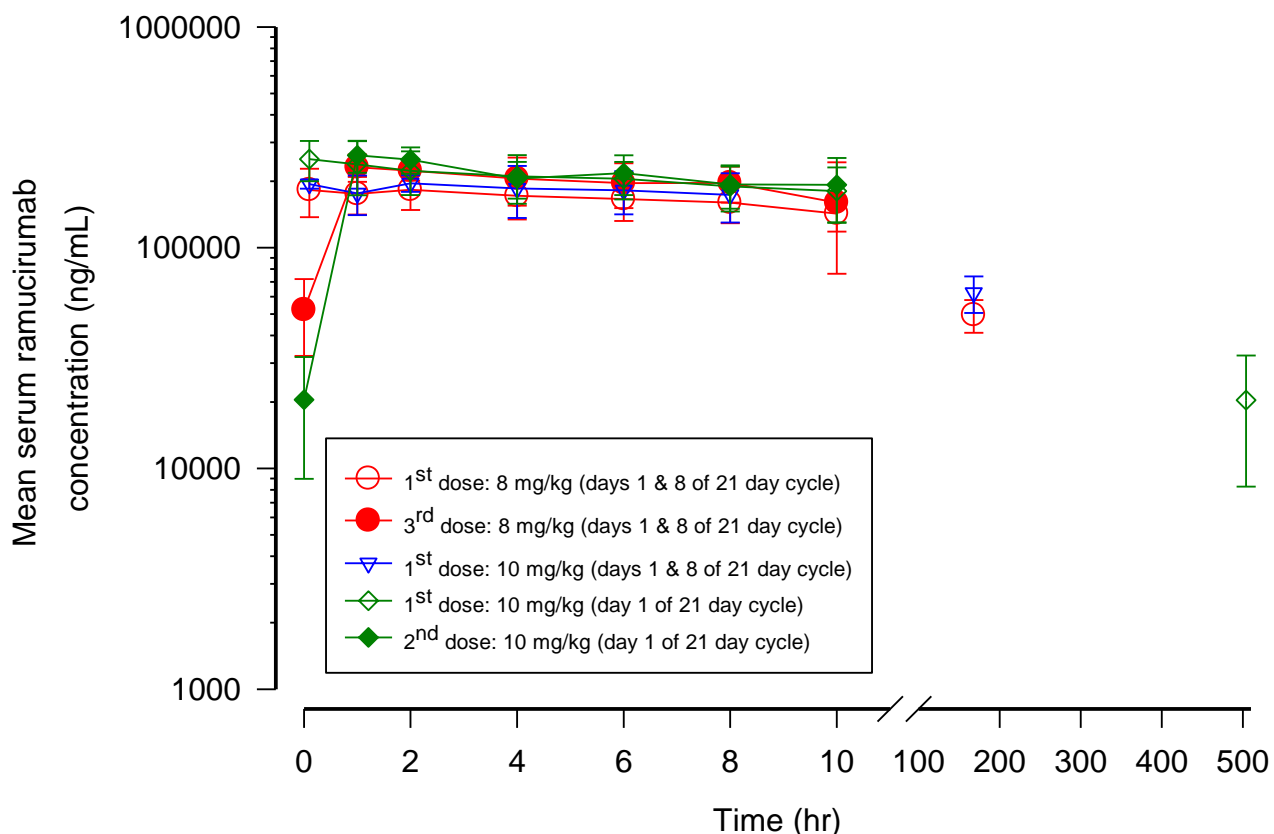
Gemcitabine (1250 mg/m<sup>2</sup>) was administered as an IV infusion over approximately 30 minutes on days 1 and 8 of a 21-day cycle in conjunction with oral abemaciclib for the treatment of patients with advanced NSCLC. The graph plots the mean (SD) plasma concentration of gemcitabine metabolite (2',2'-difluorodeoxyuridine) over time [n = 22 for first dose (cycle 1) and n = 6 for third dose (cycle 2)].



**Figure S3. Ramucirumab concentration over time following coadministration of abemaciclib.**

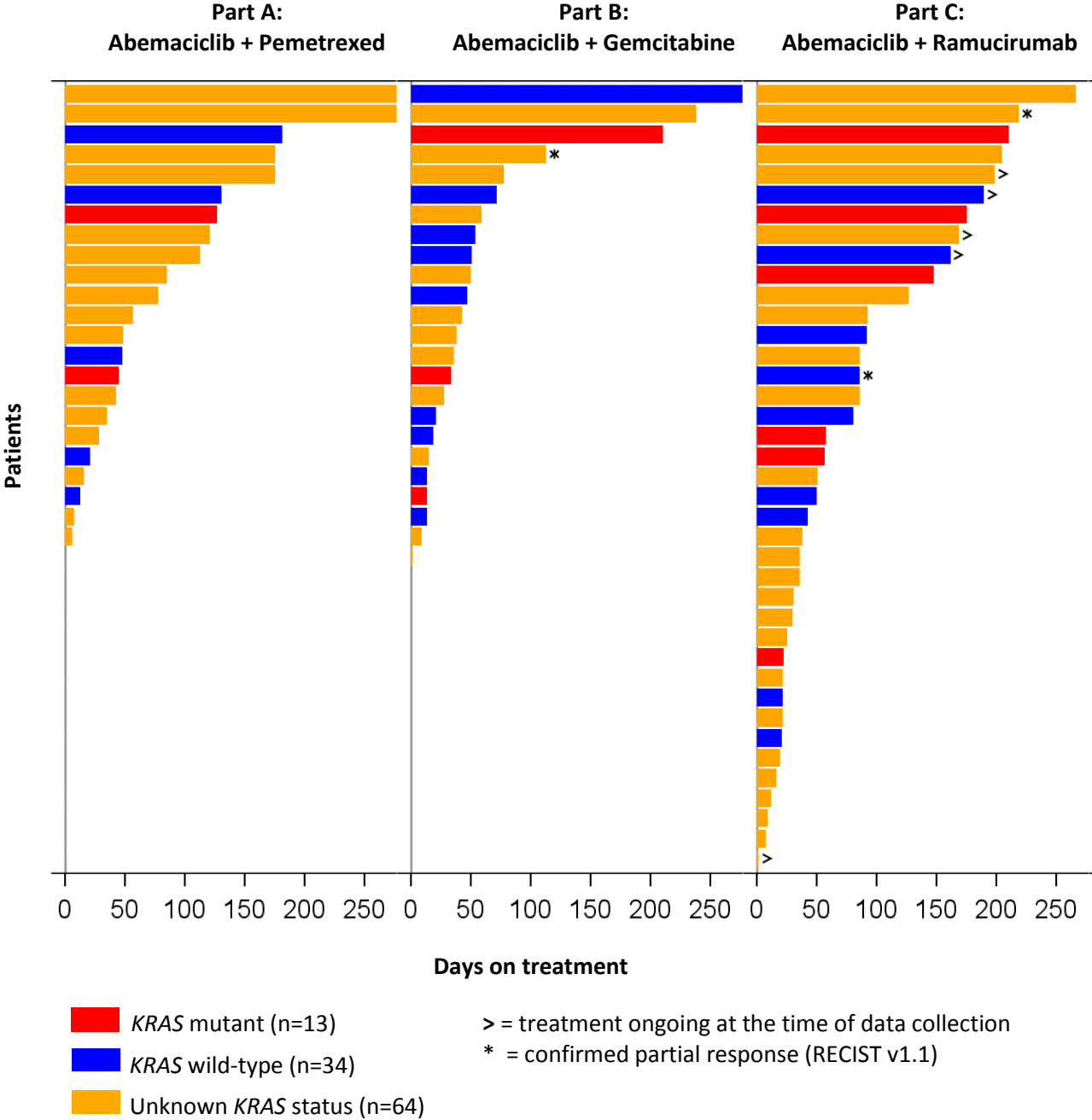
Ramucirumab was administered as an IV infusion over approximately 60 minutes on day 1 of a 21-day cycle (for 10 mg/kg) or on days 1 and 8 of a 21-day cycle (for 8 or 10 mg/kg) in conjunction with oral abemaciclib for treatment of patients with advanced NSCLC. The graph plots the mean (SD) serum concentration of ramucirumab over time.

For 10 mg/kg on day 1 of 21-day cycle, n = 22 for first dose (cycle 1) and n = 12 for second dose (cycle 2).  
For 8 mg/kg on days 1 and 8 of 21-day cycle, n = 12 for first dose (cycle 1) and n = 9 for third dose (cycle 2).  
For 10 mg/kg on days 1 and 8 of 21-day cycle, n = 4 for first dose (cycle 1).  
Note: Evaluable mean PK data were not available following third dose (cycle 2) of 10 mg/kg on days 1 and 8 of 21-day Cycle.



**Figure S4. Treatment duration by KRAS status.**

Treatment duration is plotted for each patient receiving abemaciclib with pemetrexed (part A), gemcitabine (part B), and ramucirumab (part C). *KRAS* mutation status, treatment status, and tumor response are notated as described in the key.



**Figure S5. Best change in tumor size by *KRAS* status**

Percent change in tumor size is plotted for each patient receiving abemaciclib with pemetrexed (part A), gemcitabine (part B), and ramucirumab (part C). *KRAS* mutation status of each patient is indicated in the color key.

