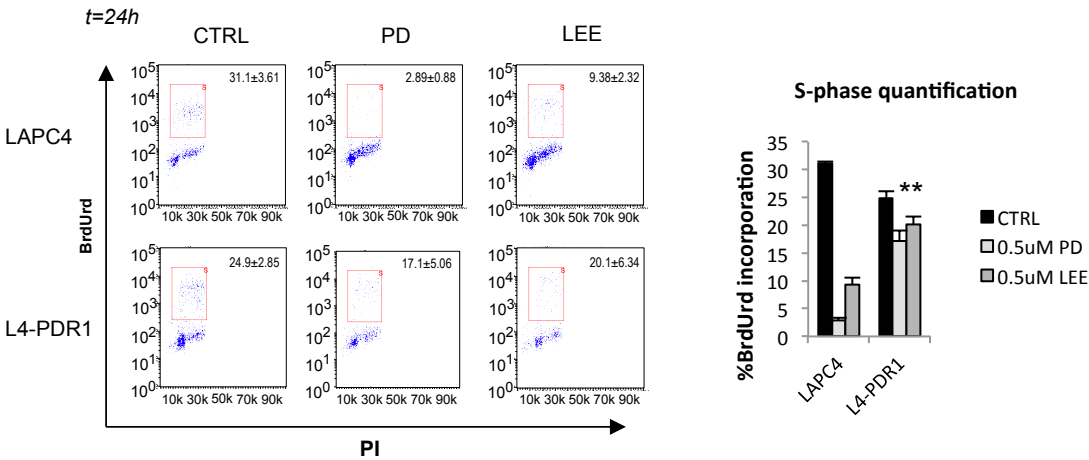
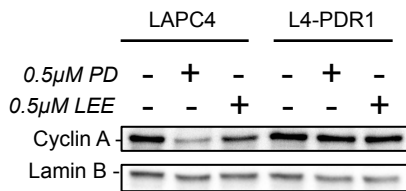


A



B



Supplementary Figure 1: Acquired resistance to palbociclib results in broad CDK4/6 inhibitor resistance. A. LAPC4 PDR PCa cells were evaluated in via flow cytometry measuring BrdU incorporation as per Figure 1A. Flow traces were gated for the BrdU+ S-phase population (representative images for biological triplicates shown on the left) and quantified on the right (*Statistical significance determined for PDR vs parental, Student's t-test *p*<0.05). PD and LEE fail to induce a G1-phase cell cycle arrest in LAPC4 PDR lines, as was observed for the parental cells. **B.** Immunoblotting for Cyclin A revealed retained Cyclin A expression in the LAPC4 PDR models after 24h 0.5uM PD or LEE treatment, demonstrating biochemical resistance.