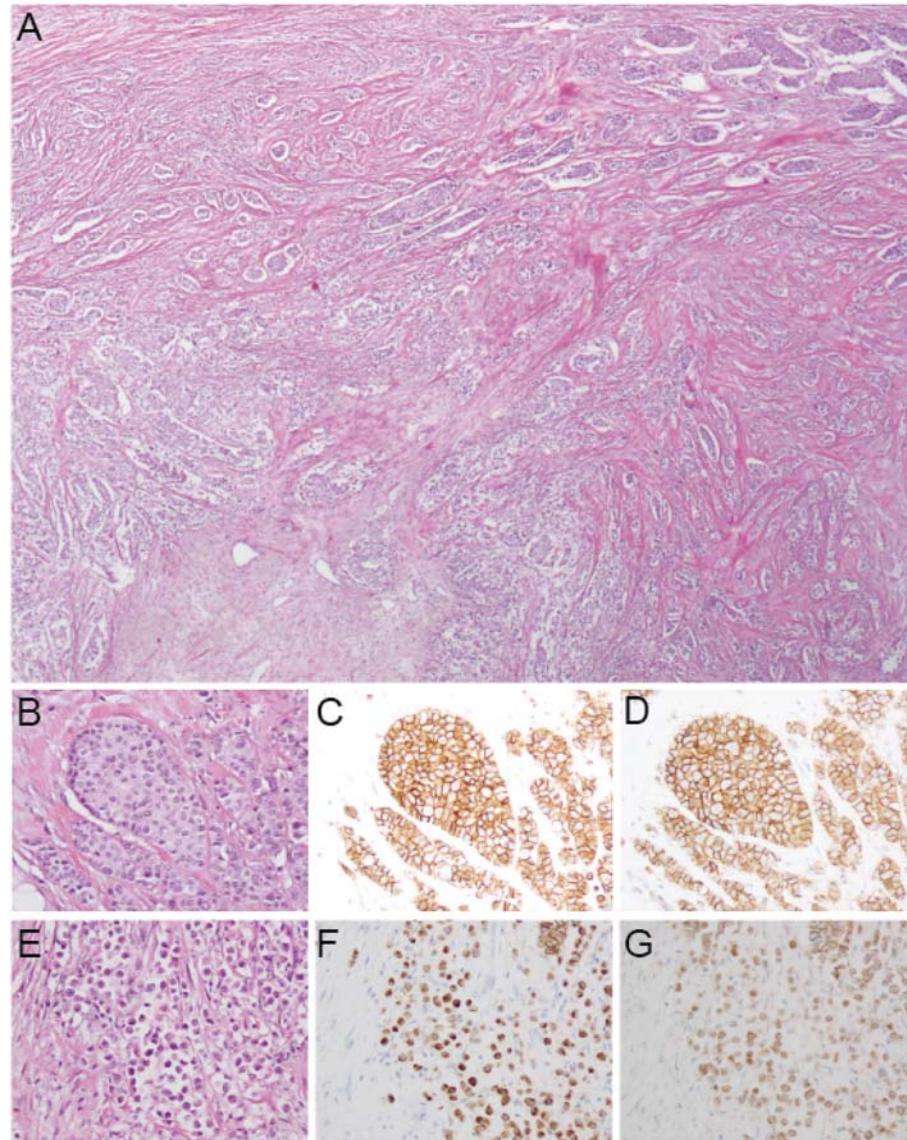


Supplementary Figure S4

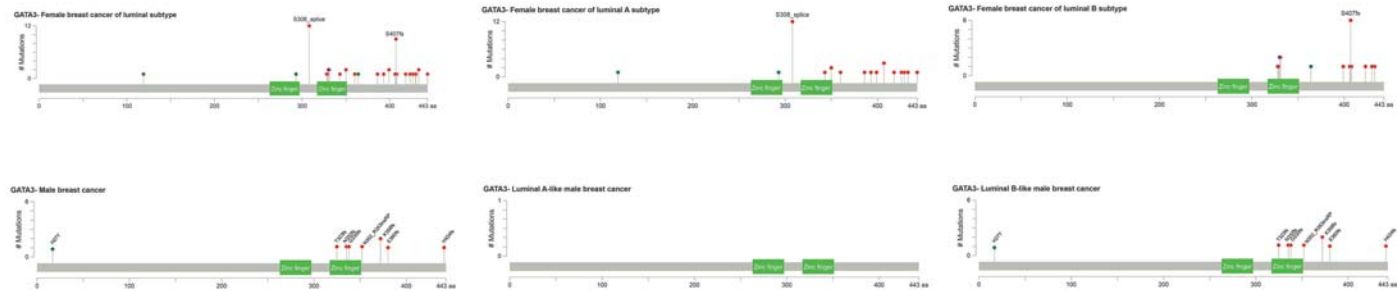


Supplementary Figure S4: Morphologic and immunophenotypic features of case MB-T88.

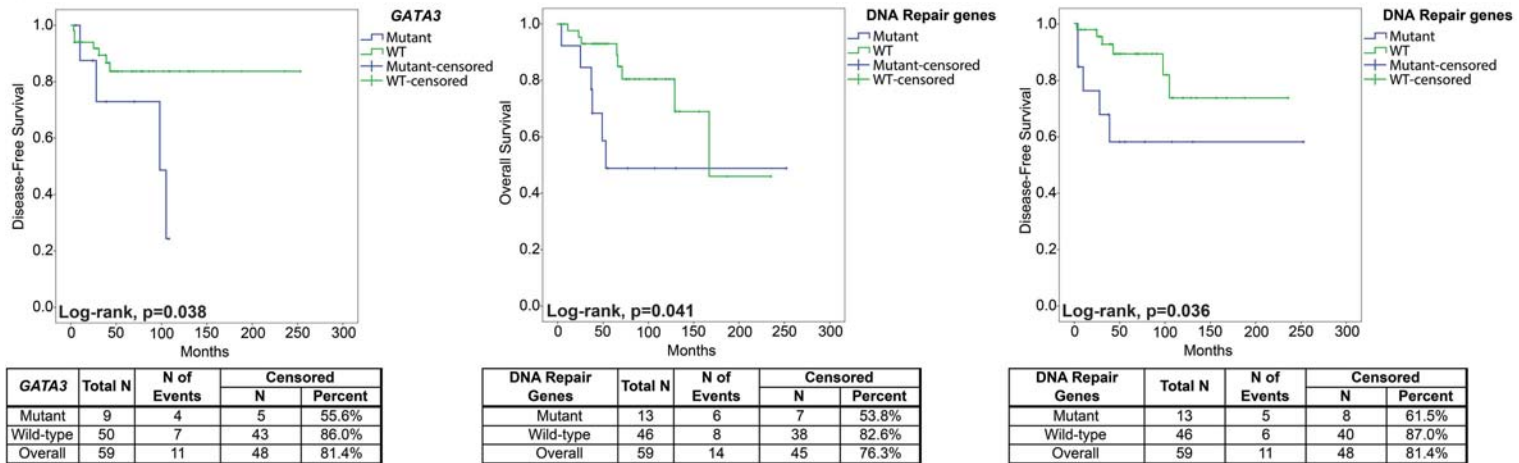
Representative micrographs of case MB-T88 classified as an invasive mixed carcinoma with no special type and lobular components. In **(A)** Low-power magnification (12.5X) displaying the no special type component predominantly in the upper right corner and the lobular component predominantly in the lower part. In **(B)** high-power magnification (200X) of the no special type component, stained for E-cadherin **(C)** and catenin p120 **(D)**, which showed retained membranous expression. In **(E)** high-power magnification (200X) of the lobular component, stained for E-cadherin **(F)** and catenin p120 **(G)**, showing both loss of membranous expression and cytoplasmic accumulation.

Supplementary Figure S5

A



B



Supplementary Figure S5: *GATA3* mutational spectrum in male breast cancer and female breast cancer and survival curves of mutation status of *GATA3* and in genes affecting DNA repair pathway.

(A) Mutation diagrams (lollipop plots) of non-synonymous *GATA3* somatic mutations in the male breast cancers studied here and female breast cancers (FBCs) derived from The Cancer Genome Atlas (TCGA) (13) according to intrinsic subtypes. For the generation of lollipop plots, MutationMapper on cBioPortal was employed (www.cbioportal.org). Mutations are depicted according to their genomic position (x-axis) and the frequency of each mutation is represented on the y-axis. Specific domains are represented by green boxes. (B) Disease-free survival curves of *GATA3* mutations status (left), and overall survival (middle) and disease-free survival curves of mutation status in genes affecting DNA repair pathway.