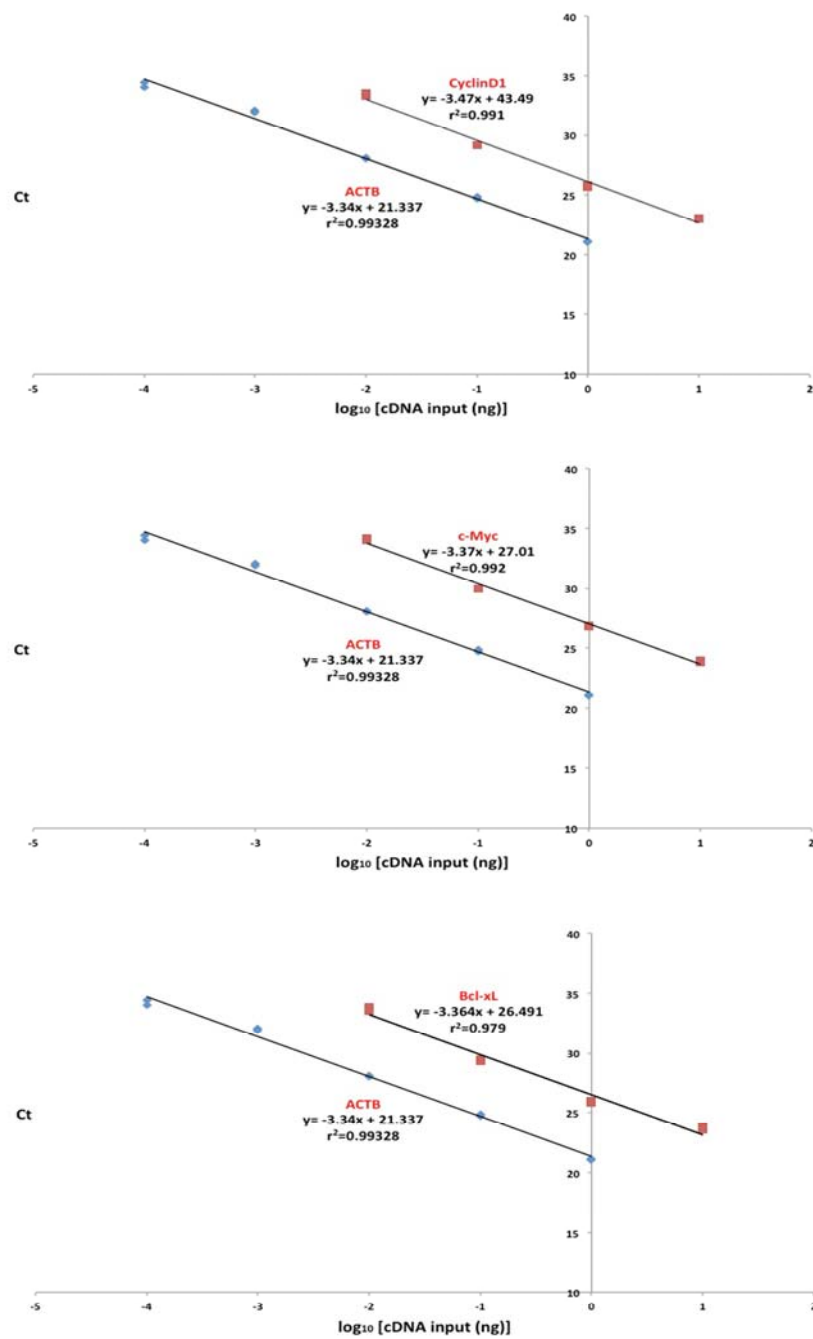


Figure S5



**Fig S5.** Validation of the comparative  $C_T$  ( $2^{-\Delta\Delta C_T}$ ) method. The efficiency of the amplification of the target genes (CyclinD1, c-Myc and Bcl-xL) and internal control (ACTB) was examined by means of real-time PCR and SYBR Green detection. With the use of reverse transcriptase, cDNA was synthesised from 2  $\mu$ g total RNA isolated from human BB49 cells. Serial dilutions of cDNA over a 100-fold range were amplified by real-time PCR using gene-specific primers. . The  $\Delta C_T$  was calculated for each cDNA dilution and plotted vs it.