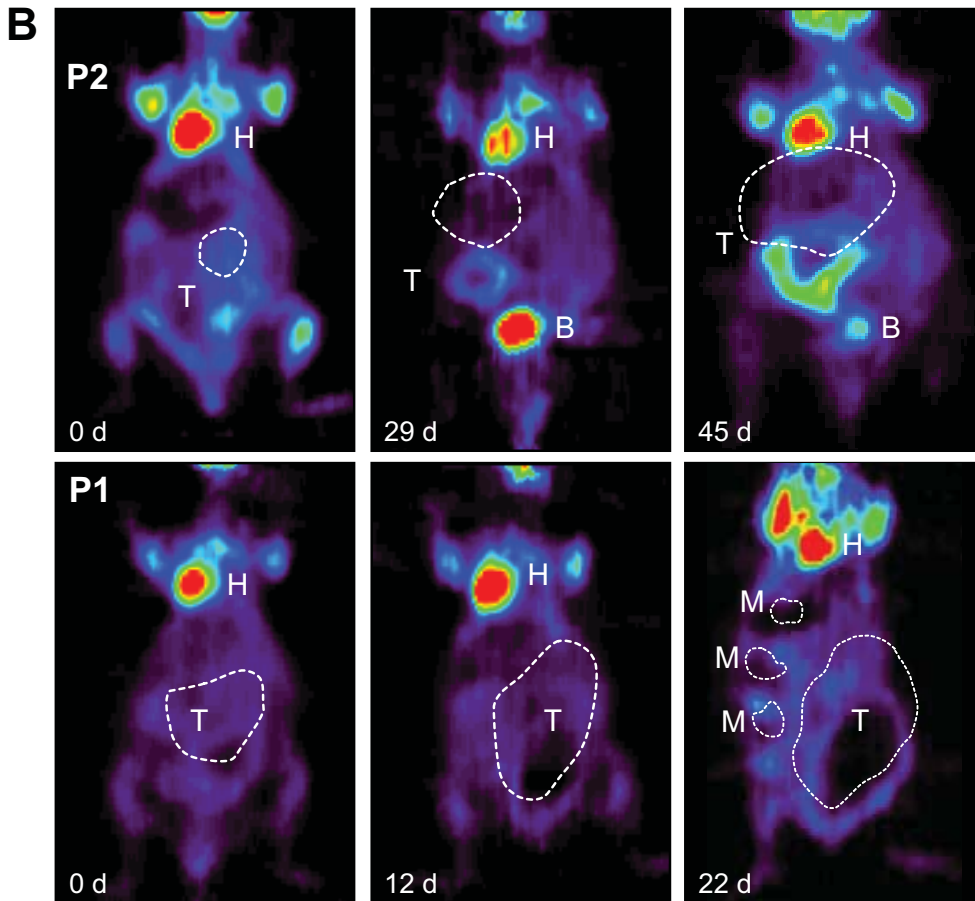
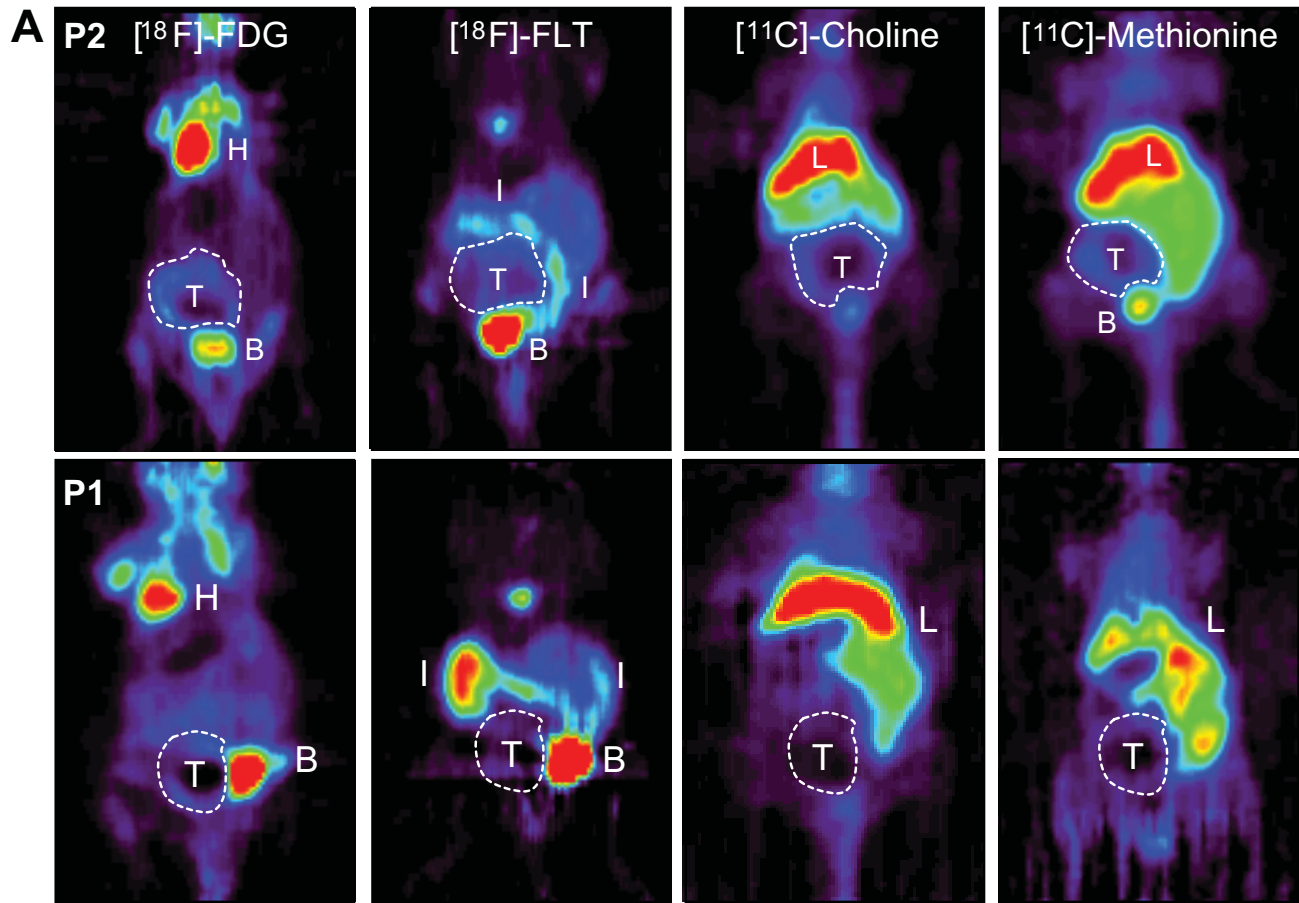


SUPPLEMENTARY FIGURE 4



Supplementary figure 4. 18-FDG is the best radiotracer for tumor growth evaluation. (A) Representative 8-FDG, 18-FLT, 11C-Choline and 11C-Methionine micro-PET images of mice with palpable primary tumors growing in the cecum wall. (B) Representative micro-PET images showing the evolution of 18-FDG signal along tumor growth in mice injected with cells derived from the indicated patients. Images were taken at the indicated days after the first measurement. (A, B) H, heart; T, tumor; B, urinary bladder; I, intestine; L, liver; M, metastasis. Dashed lines delineate distant metastasis (M) or primary xenograft tumors (T) grown in the cecum wall.