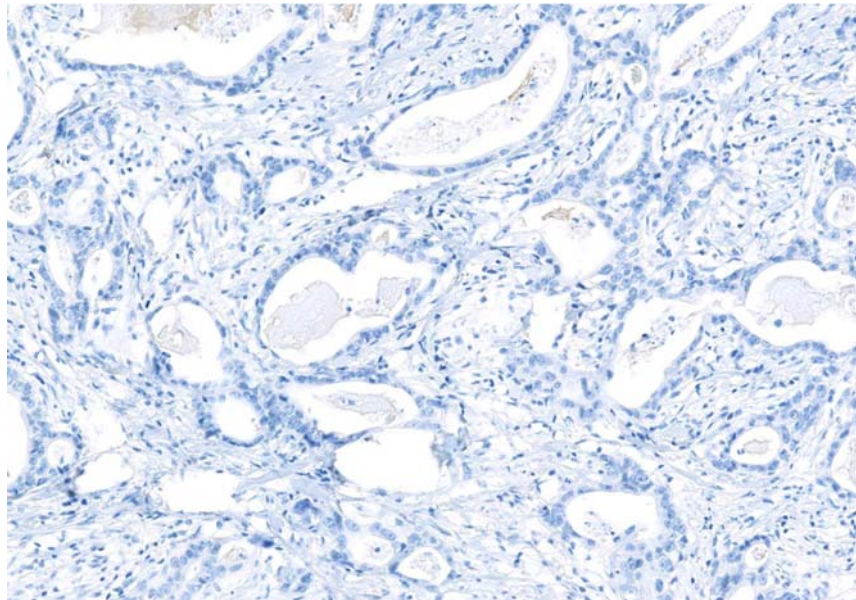
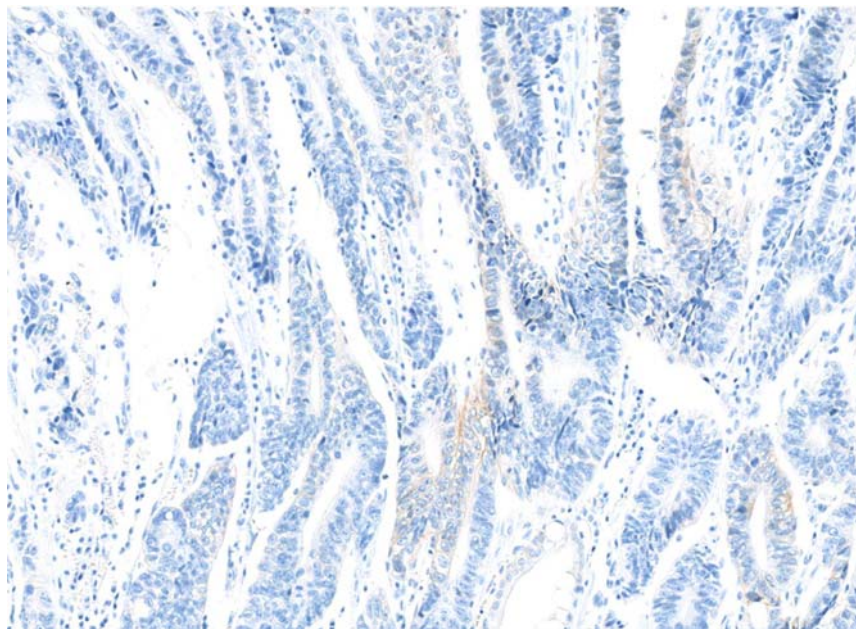


**Supplementary Figure 2.**

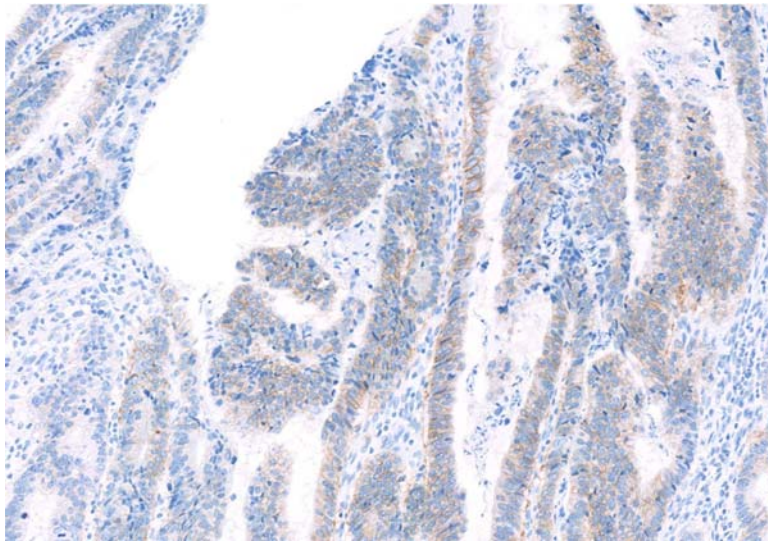
**A**



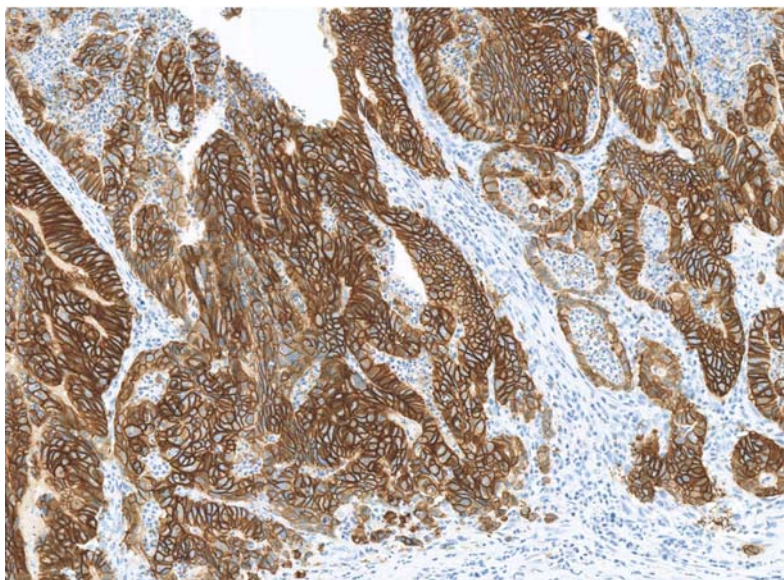
**B**



**C**



**D**



**Supplementary Figure 2.**

Representative examples of gastric carcinoma immunostaining for HER2 (magnification  $\times 100$ ). (A) No reactivity or membranous reactivity in  $< 10\%$  of cells (score 0). (B) Faint/barely perceptible membranous reactivity in  $> 10\%$  of cells; cells are reactive in part of their membrane (score 1+). (C) Weak-to-moderate, complete, or basolateral membranous reactivity in  $> 10\%$  of tumor cells (score 2+). (D) Moderate-to-strong, complete, or basolateral membranous reactivity in  $> 10\%$  of tumor cells.