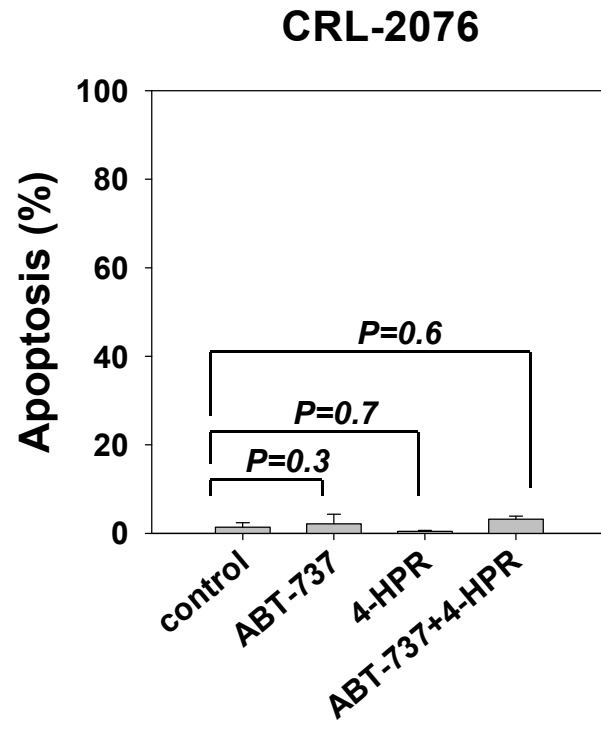


Supplementary Figure 1



Supplements; Table 1. *In vivo* efficacy of ABT-737 in combination with 4-HPR in CHLA-119 NB xenografts.

	CHLA-119		
	Tumor volume T/C value	Median EFS, days (range)	EFS T/C value
Control	-	59.5(24-101)	-
4-HPR	45.9%	99*§ (38-255)	1.7
ABT-737	66.8%§	68 § (35-112)	1.1
4-HPR/ABT-737	30.9%*	194.5*(101-426)	3.3

- Indicates not applicable; *Relative to controls, $P \leq 0.05$; § Relative to 4-HPR/ABT-737, $P \leq 0.05$.

For the EFS T/C measure, agents are considered highly active if they meet three criteria: (a) an EFS T/C >2; (b) a significant difference in EFS distributions ($P \leq 0.05$), and (c) a net reduction in median tumor volume for animals in the treated group at the end of treatment as compared to at treatment initiation. Agents meeting only the first two criteria are considered to have intermediate activity. Agents with an EFS T/C <2 are considered to have low levels of activity. For the tumor volume T/C response measure, agents producing a T/C $\leq 15\%$ are considered highly active; those with a T/C $\leq 45\%$ but T/C $\geq 15\%$ are considered intermediately active; and those with mean T/C values $\geq 45\%$ are considered to have low levels of activity.