

Figure S1

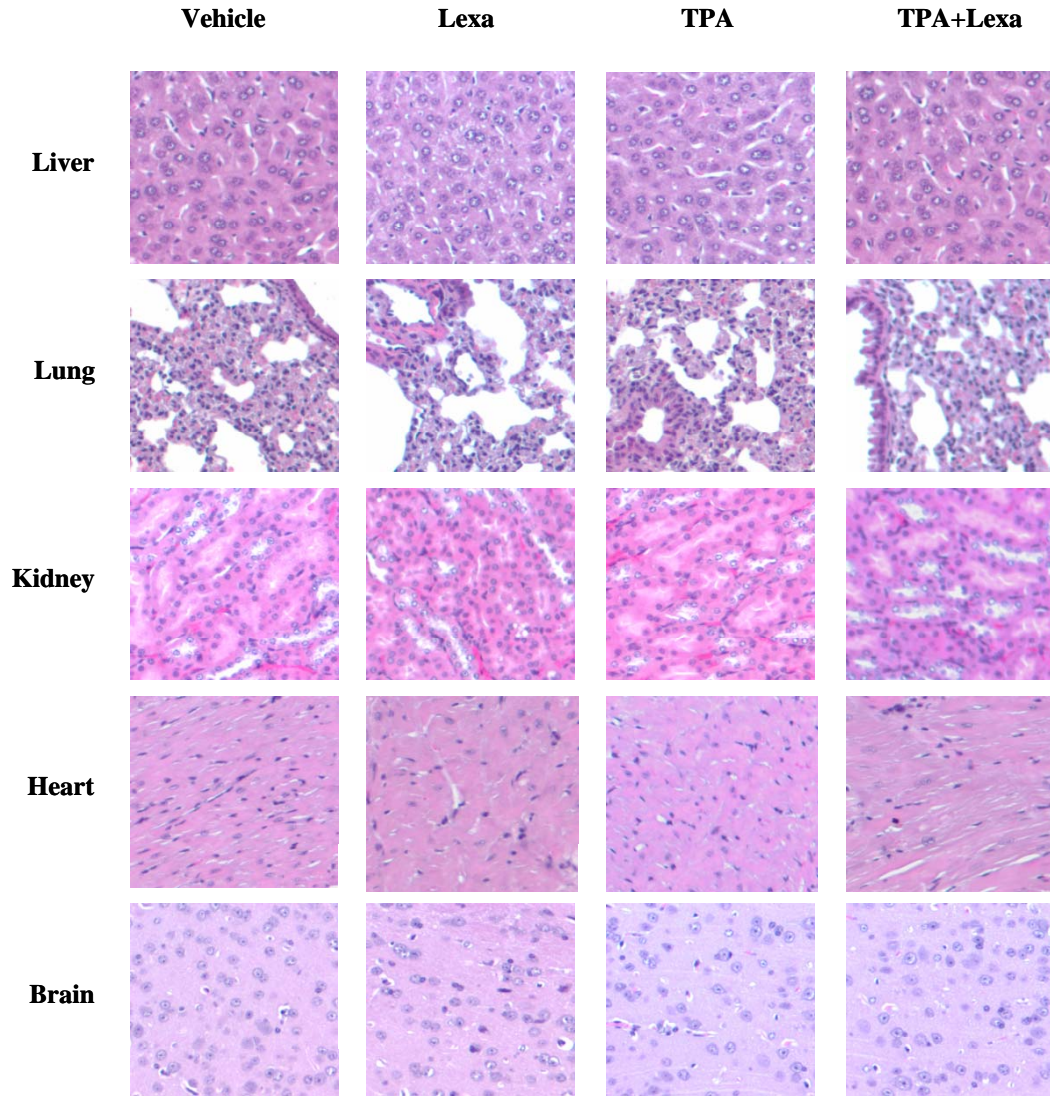


Figure S1. Representative H&E staining of liver, lung, kidney, heart and brain tissues from one animal in each treatment group at 200X magnification.

Figure S2

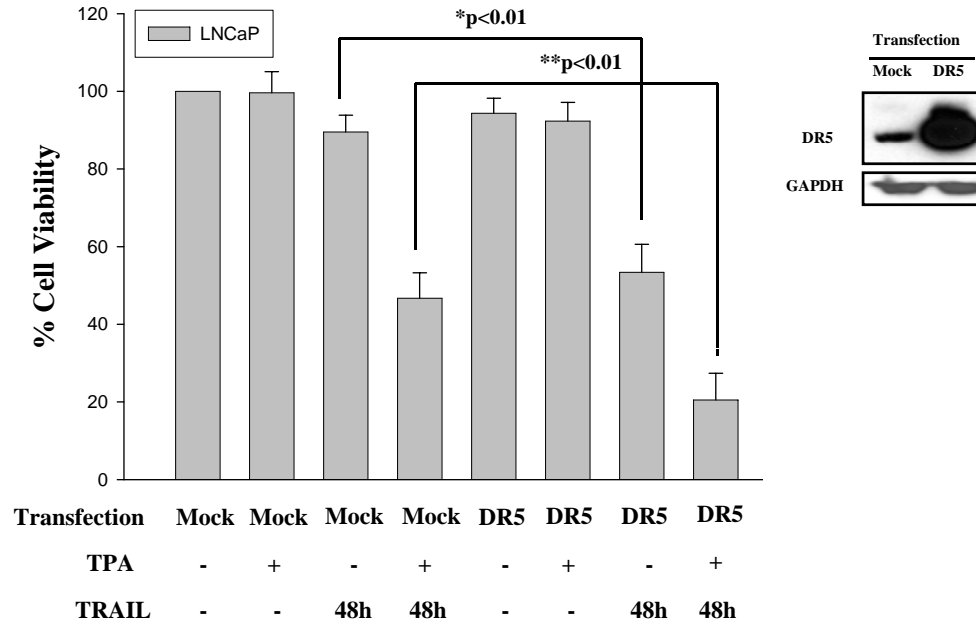


Figure S2. DR5 overexpression enhances TRAIL-induced and TPA-enhanced TRAIL-induced cell death. LNCaP cells transfected with ectopic DR4 for 24h, then pretreated with TPA for 24h followed by treatment with TRAIL for an additional 48h. Cell viability was measured by MTT assay. Ectopic expression of DR5 converts TRAIL-resistant LNCaP cells to a TRAIL-sensitive phenotype (*). When DR5 is overexpressed TPA sensitizes LNCaP cells to TRAIL-induced apoptosis more effectively (**). Inset is a Western blot demonstrating effective overexpression of DR5 in LNCaP cells. GAPDH is used for loading control.