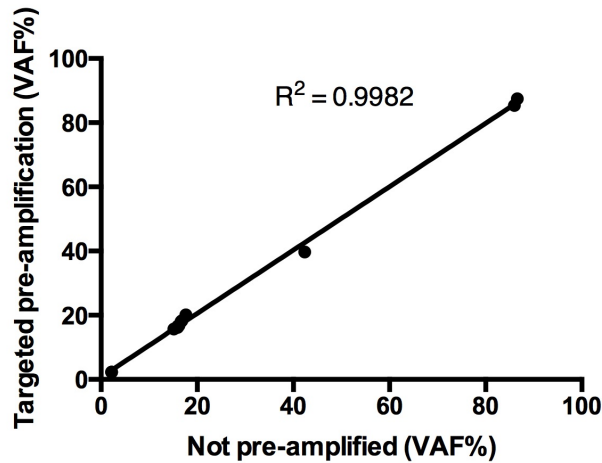


Supplementary Figure S1. Box plots of cfDNA copies/ml detected by ddPCR in plasma from blood collected in EDTA and CTAD tubes. Median and Standard Deviation of wt TP53 copies/ml in plasma for each condition tested are depicted (n=7). The Mann-Whitney Wilcoxon rank sum test was used for statistical analysis $p=0.477$.



Supplementary Figure S2. Correlation of mutation fractional abundance of TP53 gene after targeted pre-amplification and without pre-amplification in reference samples with different quantities of mutated TP53 (n=2-7). Spearman's correlation coefficient was used to correlate the two variables ($p<0.0001$).