

Figure 1. LD analysis of *CYP1A1* gene in AA, D, and C. Similar patterns of LD structure were observed in the three populations. The same haplotype block was defined.



Figure 2. LD analysis of *CYP1B1* gene in AA, D, and C. Different patterns of LD structure were observed in the three populations. Two different haplotype blocks were defined in AA and D, and one haplotype block was defined in C.

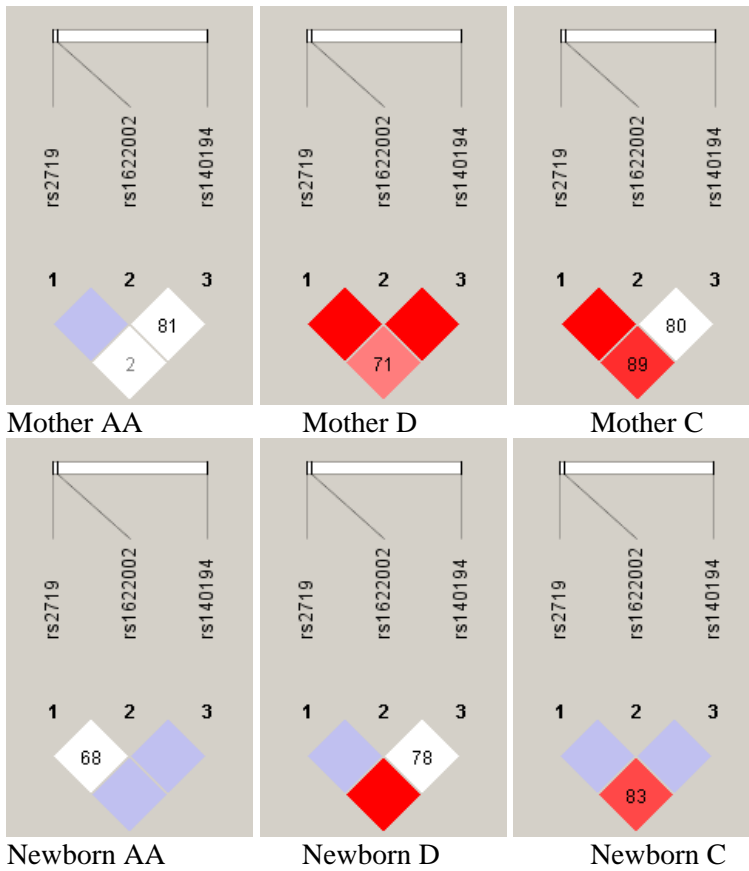


Figure 3. LD analysis of *GSTT2* gene in AA, D, and C. Different patterns of LD structure were observed in the three populations. No haplotype block was defined.