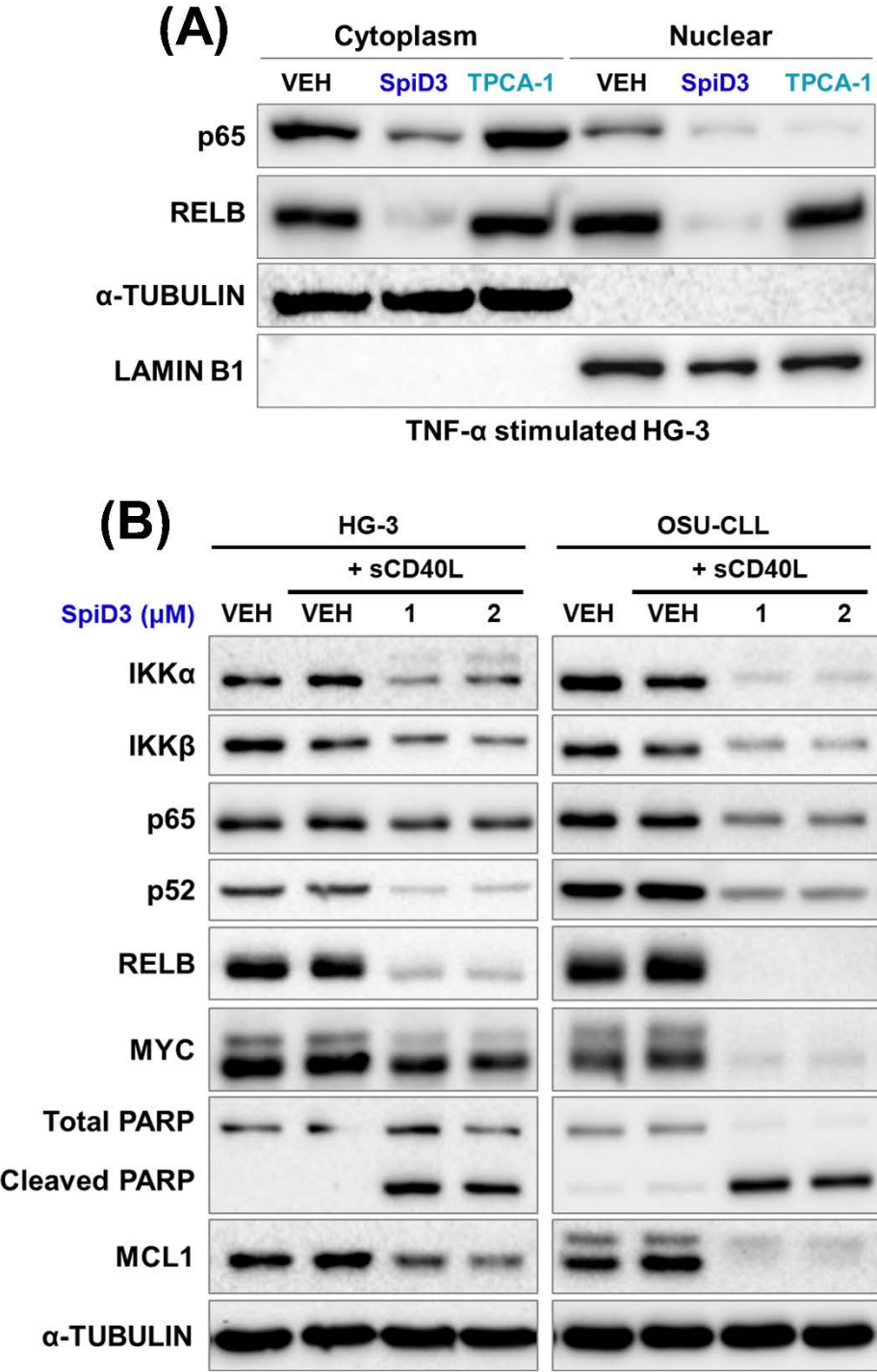


Figure S6. SpiD3 inhibits NF- $\kappa$ B activity and diminishes CD40L-induced survival signaling in CLL.



**Figure S6. SpiD3 inhibits NF- $\kappa$ B activity and diminishes CD40L-induced survival signaling in CLL.**

**(A)** HG-3 cells were treated with SpiD3 (2  $\mu$ M), TPCA-1 (10  $\mu$ M), or equivalent DMSO vehicle (VEH) for 4 h and stimulated with TNF- $\alpha$  (20 ng/mL) during the last 15 min of treatment (n = 4 independent experiments). Cytoplasmic and nuclear fractions were subjected to immunoblotting probing for p65 and RELB.  $\alpha$ -TUBULIN served as the cytoplasmic fraction loading control and LAMIN B1 served as the nuclear fraction loading control. **(B)** Immunoblot analysis of the indicated proteins in whole cell lysates of HG-3 and OSU-CLL cells treated with SpiD3 (1, 2  $\mu$ M) for 4 h and co-currently stimulated with sCD40L (500 ng/mL).  $\alpha$ -TUBULIN served as the loading control (n = 4 independent experiments/cell line).